

6. DISTRICT PROFILES

The information contained in the district profiles has been provided by the relevant clusters/sectors based on their operational monitoring in the various districts of humanitarian operation, as well as some government sources. The following explanatory notes related to individual indicators contained in the profiles. All indicators were suggested by the clusters/sectors.

Estimated district population figures are sourced to the Uganda Bureau of Statistics (UBOS), with projections for population growth by district at the end of 2008 on the basis of the 2002 census. **Estimated number of persons displaced and estimated IDP and returnee population by location type** in each district is sourced to the UNHCR population movement statistics. The estimated number of persons displaced is the sum of the number of IDPs and number of people in transit sites.

The **Health** indicator for DPT3 refers to three doses of vaccine against diphtheria, pertussis and tetanus. DPT3 is commonly used as a measure for the availability of health services. Where the coverage rate exceeds 100%, this indicates that a large proportion of the under-five population than originally identified by the district has been reached by the vaccination campaign. The **nutrition** indicators for GAM and SAM (where relevant) have been completed on the basis of nutritional surveys undertaken by UNICEF, WFP and/or ACF in the various districts between June and August 2008.

Water, Sanitation and Hygiene figures in IDP camps and transit sites are measured against the SPHERE standard of 15 litres per person per day (l/p/d), while figures for return areas are measured against national standards, i.e., a water source within 1.5 kilometres and one latrine per household.

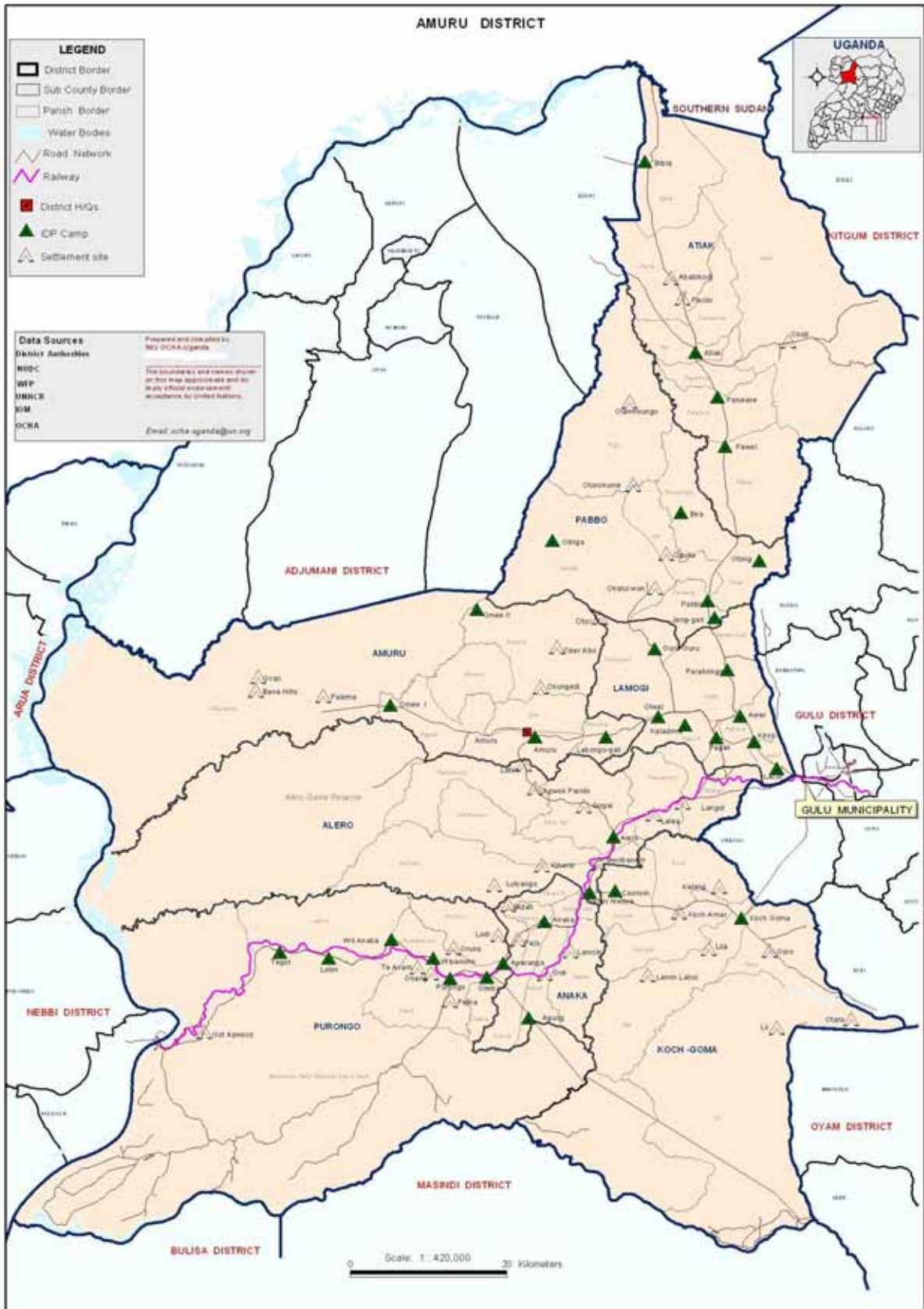
Food Security indicators linked to agricultural assistance are calculated on the basis of the number of households having received various forms of assistance during the first planting season. An agricultural return package includes seeds and tools, while more comprehensive agricultural assistance encompasses the return kits as well as provision of small livestock (ruminants), oxen and/or ox ploughs (animal traction), Farmer Field Schools (FFS)/agricultural extension, aquaculture and agro-forestry, among other activities. In Karamoja, where animal husbandry is the primary form of livelihood for much of the population, food security indicators include the estimated number of livestock, both cattle and small ruminants (sheep and goats) and the number of animal vaccinated against/killed by diseases such as CBPP, PPR and Foot and Mouth Disease (FMD).

Education figures are provided as an average for all types of schools (i.e., both displaced and returned schools) in a district.

The **Protection** indicator “functional community-based child protection structure” comprises one CDO, one child protection lead agency (NGO) and one child protection community-based structure. The indicator “functional service delivery system for GBV survivors” comprises one ACDO, one designated GBV lead agency, one operational community-based structure (i.e., village health team, Child Protection Committee, etc), one health centre with post-rape care supplies in stock, one staff person trained in post-rape care and two child and family police protection focal points.

The “**Who does What Where**” includes agencies that are currently carrying out activities on the ground in the relevant district. Government actors, donors and agencies planning to start new activities have not been included.

For the first time in 2009, a map showing **refugee** settlements and a breakdown of the refugee population by major nationalities in each location is also provided.



AMURU DISTRICT

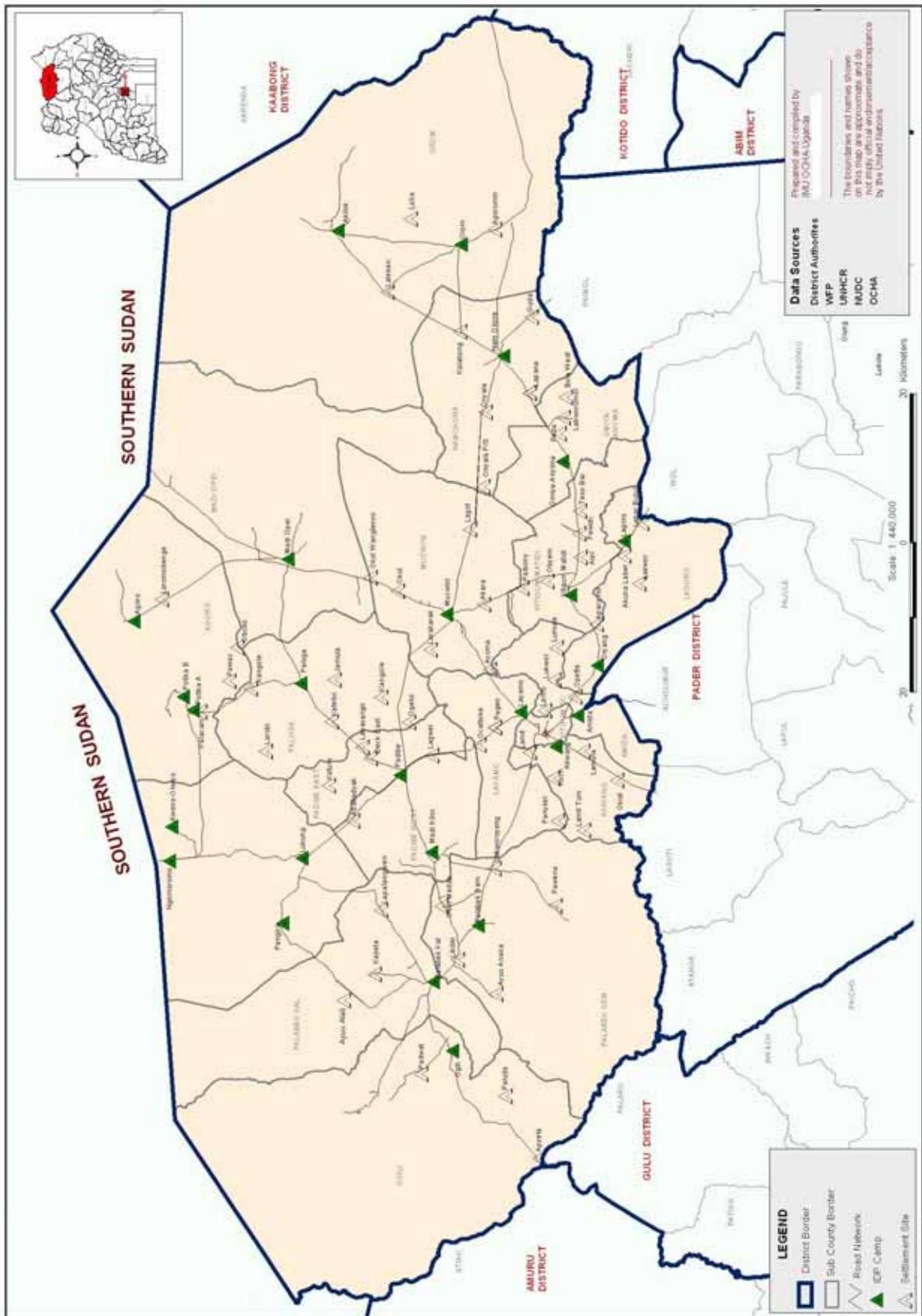
DISTRICT HIGHLIGHTS			
Demographics			
Estimated district population	208,513		
Estimated no. of persons displaced in district†	211,000		
Estimated IDP and returnee population by location type	<i>IDP camps</i>	<i>Transit Sites</i>	<i>Village of Origin</i>
	154,000	57,000	17,000
No. of locations in district, by type	34	69	54
Health, Nutrition and HIV/AIDS			
	<i>District</i>	<i>National Average</i>	
% children under-five covered by DPT3 vaccinations	119%	90%	
GAM rate	8.7%	6%	
% HIV/AIDS patients on anti-retroviral (ARV) drugs	21%	45%	
Water, Sanitation and Hygiene			
	<i>Water</i>	<i>Sanitation</i>	
Access to safe drinking water and sanitation in camps	16 l/p/d	10 persons/stance	
Access to safe drinking water and sanitation in transit sites	39 l/p/d	72 persons/stance	
% population accessing safe drinking water & sanitation in villages of origin	16%	10%	
Food Security			
	<i>Covered</i>	<i>Targeted</i>	
No. beneficiaries receiving GFD	226,244	226,244	
No. beneficiaries phased off of GFD	33,835	71,451	
No. households received basic agricultural return package	32,295	69,959	
No. households received comprehensive agricultural assistance	40,205	78,917	
Education			
	<i>District Total</i>	<i>Displaced Schools</i>	<i>Returned Schools</i>
No. of functioning primary schools	95	55	40
% school-age girls enrolled in primary school	47%		
No. primary schools w/o access to safe water and sanitation	14 no safe water, 21 no latrines		
Pupil : latrine ratio (<i>national standard = 1: 40</i>)	1:68		
Pupil : classroom ratio (<i>national standard = 1:55</i>)	1:76		
Teacher : pupil ratio (<i>national standard = 1:55</i>)	1:73		
Protection and Human Rights			
	<i>District</i>		
% S/C with functional service delivery system for GBV survivors	40%		
% rape survivors reporting to health facilities w/in 72 hrs who receive appropriate medical care	Data not available		
% S/C with at least one functional community-based child protection structure	75%		
% S/C with appointed child protection lead agency	100%		
% S/C with an appointed CDO	88%		

WHO DOES WHAT WHERE (3W)				
Education	FSAL	HNHA	Protection	WASH
African Child Outreach, ARC, AVSI, ECHO Bravo! Invisible Children, LABE, SCiU, St. Kizito, UNICEF, WFP, Windle Trust, Visions in Action	ACDI, ACF, ACORD, CARE, Caritas, CPA, CRS, FAO, GDFA, ICRC, NRC, VOCA, WFP, WV	ACF, ACORD, ACTED, ACTV, AMREF, ARC, AVSI, CARE, CPAR, FPAU, Gulu University Teaching Hospital (GUTH), GYC, HAU, Internews, IOM, Malaria Consortium, MAP, Marie Stopes, MSF, NRC, NUMAT, Refuge Law Project, SCiU, TASO, UNAIDS, UNFPA, UNICEF, WFP, WHO, WV	ARC, AVSI, CARE, Caritas, CPAR, CPA, CRS, Empowering Hands, GUSCO, GWD, HURIFO, ICRC, IOM, Legal Aid Project, MSF-C, NGO Forum, NRC, OHCHR, Salvation Army, SCiU, UNFPA, UNHCR, UNICEF, Walokokwo, War Child Canada (WCC), War Child Holland (WCH), WV	ACF, AVSI, Caritas, CRS, ICRC, Invisible Children, UNHCR, UNICEF

GULU DISTRICT

DISTRICT HIGHLIGHTS			
Demographics			
Estimated district population	353,955		
Estimated no. of persons displaced in district†	194,000		
Estimated IDP and returnee population by location type	<i>IDP camps</i>	<i>Transit Sites</i>	<i>Village of Origin</i>
	108,000	86,000	109,000
No. of locations in district, by type	31	163	162
Health, Nutrition and HIV/AIDS			
	<i>District</i>	<i>National Average</i>	
% children under-five covered by DPT3 vaccinations	114%	90%	
GAM rate	8.7%	6%	
% HIV/AIDS patients on ARV drugs	78%	45%	
Water, Sanitation and Hygiene			
	<i>Water</i>	<i>Sanitation</i>	
Access to safe drinking water and sanitation in camps	18 l/p/d	7 persons/stance	
Access to safe drinking water and sanitation in transit sites	24 l/p/d	24 persons/stance	
% population accessing safe drinking water & sanitation in villages of origin	18%	7%	
Food Security			
	<i>Covered</i>	<i>Targeted</i>	
No. beneficiaries receiving GFD	221,747	221,747	
No. beneficiaries phased off of GFD	78,833	47,266	
No. households received basic agricultural return package	17,275	31,239	
No. households received comprehensive agricultural assistance	32,972	49,924	
Education			
	<i>District Total</i>	<i>Displaced Schools</i>	<i>Returned Schools</i>
No. of functioning primary schools	112	8	104
% school-age girls enrolled in primary school	47%		
No. primary schools w/o access to safe water and sanitation	68		
Pupil : latrine ratio (<i>national standard = 1: 40</i>)	1:54		
Pupil : classroom ratio (<i>national standard = 1:55</i>)	1:72		
Teacher : pupil ratio (<i>national standard = 1:55</i>)	1:55		
Protection and Human Rights			
	<i>District</i>		
% S/C with functional service delivery system for GBV survivors	50%		
% rape survivors reporting to health facilities w/in 72 hrs who receive appropriate medical care	Data not available		
% S/C with at least one functional community-based child protection structure	53%		
% S/C with appointed child protection lead agency	87%		
% S/C with an appointed Community Development Officer (CDO)	73%		

WHO DOES WHAT WHERE (3W)				
Education	FSAL	HNHA	Protection	WASH
Alliance for African Assistance, African Child Outreach, ARC, AVSI, Child Voice International, ECHO-Bravo, Invisible Children, LABE, NUGEN, SCiU, St. Kizito, UNICEF, Visions in Action, WFP, Windle Trust	ACDI, ACF, ACORD, CARE, Caritas, CPA, CRS, FAO, GDFA, ICRC, NRC, VOCA, WFP, WV	ACF, ACORD, ACTED, ACTV AMREF, ARC, AVSI, CARE, CPAR, FPAU, GUTH, GYC, HAU, Internews, IOM, Malaria Consortium, MAP, Marie Stopes, MSF, NRC, NUMAT, Refuge Law Project, SCiU, TASO, UNAIDS, UNFPA, UNICEF, WFP, WHO, WV	ARC, AVSI, CARE, Caritas, CPA, CPAR, CRS, DRC, Empowering Hands, GUSCO, GWD, HURIFO, ICRC, IOM, Legal Aid Project, MSF-C, NGO Forum, NRC, OHCHR, Salvation Army, SCiU, UNFPA, UNHCR UNICEF, Walokokwo, WCC, WCH, WV	ACF, AMREF, Aqua Fund, AVSI, Caritas, CRS, Health Education Service Strengthening Extension Programme (HESSEP), Health Integrated Development Organisation (HIDO), ICRC, Invisible Children, UNHCR, UNICEF



KITGUM DISTRICT

DISTRICT HIGHLIGHTS			
Demographics			
Estimated district population	357,433		
Estimated no. of persons displaced in district†	174,500		
Estimated IDP and returnee population by location type	<i>IDP camps</i>	<i>Transit Sites</i>	<i>Village of Origin</i>
	104,500	70,000	109,000
No. of locations in district, by type	26	598	606
Health, Nutrition and HIV/AIDS			
	<i>District</i>	<i>National Average</i>	
% children under-five covered by DPT3 vaccinations	61%	90%	
GAM rate	7.9%	6%	
% HIV/AIDS patients on ARV drugs	28.9%	45%	
Water, Sanitation and Hygiene			
	<i>Water</i>	<i>Sanitation</i>	
Access to safe drinking water and sanitation in camps	14.5 l/p/d	30 persons/stance	
Access to safe drinking water and sanitation in transit sites	8 l/p/d	33%	
% population accessing safe drinking water & sanitation in villages of origin	8%	33%	
Food Security			
	<i>Covered</i>	<i>Targeted</i>	
No. beneficiaries receiving GFD	299,700	299,700	
No. beneficiaries phased off of GFD	0	112,000	
No. households received basic agricultural return package	14,016	4,500	
No. households received comprehensive agricultural assistance	23,270	159,759	
Education			
	<i>District Total</i>	<i>Displaced Schools</i>	<i>Returned Schools</i>
No. of functioning primary schools	184	64	120
% school-age girls enrolled in primary school	48%		
No. primary schools w/o access to safe water and sanitation	51		
Pupil : latrine ratio (<i>national standard = 1: 40</i>)	1:135		
Pupil : classroom ratio (<i>national standard = 1:55</i>)	1:115		
Teacher : pupil ratio (<i>national standard = 1:55</i>)	1:94		
Protection and Human Rights			
	<i>District</i>		
% S/C with functional service delivery system for GBV survivors	32%		
% rape survivors reporting to health facilities w/in 72 hrs who receive appropriate medical care	67%		
% S/C with at least one functional community-based child protection structure	95%		
% S/C with appointed child protection lead agency	100%		
% S/C with an appointed CDO	74%		

WHO DOES WHAT WHERE (3W)				
Education	FSAL	HNHA	Protection	WASH
ACDA, Active Youth Foundation (ACVIYOF), AMREF, Acholi Renaissance Youth Association (ARYA), AVSI, Building Resources Across Communities (BRAC), Caritas, CCF, CKS, COOPI, IRC, JRS, KIWODA, NRC, UNICEF, WCH, WFP, Windle Trust, WV	ACORD, Caritas, CCF, CPA, FAO, ICRC, IRC, Kitgum District Farmer Association (KIDFA), Kitgum Women Beekeepers (KITWOBEE), LWF, NRC, Oxfam, Straight Talk Foundation /Tree Talk (STF/TT), WFP, WV	AIDS Care Education Training (ACET), AMREF, AVSI, IMC, ICRC, IRC, LWF, Malaria Consortium, Meeting Point, NUMAT, Straight Talk Foundation, Visions in Action, UNFPA, UNICEF, WFP, WHO, WV	ACORD, Child Care Project, Comprehensive Peace Agreement (CPA), FHI, IRC, KICWA, Mother's Union, NRC, OHCHR, UNFPA, UNICEF, WCH	AMREF, AVSI, ICRC, IRC, LWF, Oxfam, UNICEF, URCS

PADER DISTRICT

DISTRICT HIGHLIGHTS			
Demographics			
Estimated district population	436,477		
Estimated no. of persons displaced in district†	269,957		
Estimated IDP and returnee population by location type	<i>IDP camps</i>	<i>Transit Sites</i>	<i>Village of Origin</i>
	88,056	181,901	68,982
No. of locations in district, by type	31	166	362
Health, Nutrition and HIV/AIDS			
	<i>District</i>	<i>National Average</i>	
% children under-five covered by DPT3 vaccinations	92%	90%	
GAM rate	4.9%	6%	
% HIV/AIDS patients on ARV drugs	9.8%	45%	
Water, Sanitation and Hygiene			
	<i>Water</i>	<i>Sanitation</i>	
Access to safe drinking water and sanitation in camps	20 l/p/d	30 persons/stance	
Access to safe drinking water and sanitation in transit sites	18.5 l/p/d	55 persons/stance	
% population accessing safe drinking water & sanitation in villages of origin	< 50%	38%	
Food Security			
	<i>Covered</i>	<i>Targeted</i>	
No. beneficiaries receiving GFD	288,816	353,303	
No. beneficiaries phased off of GFD	64,487	64,487	
No. households received basic agricultural return package	41,598	56,490	
No. households received comprehensive agricultural assistance	23,639	59,490	
Education			
	<i>District Total</i>	<i>Displaced Schools</i>	<i>Returned Schools</i>
No. of functioning primary schools	221	43	178
% school-age girls enrolled in primary school	46%		
No. primary schools w/o access to safe water and sanitation	50%		
Pupil : latrine ratio (<i>national standard = 1: 40</i>)	1:55		
Pupil : classroom ratio (<i>national standard = 1:55</i>)	1:88		
Teacher : pupil ratio (<i>national standard = 1:55</i>)	1:87		
Protection and Human Rights			
	<i>District</i>		
% S/C with functional service delivery system for GBV survivors	58%		
% rape survivors reporting to health facilities w/in 72 hrs who receive appropriate medical care	100%		
% S/C with at least one functional community-based child protection structure	63%		
% S/C with appointed child protection lead agency	100%		
% S/C with an appointed CDO	100%		

WHO DOES WHAT WHERE (3W)				
Education	FSAL	HNHA	Protection	WASH
AVSI, BRAC, Caritas, CCF, CESVI, Concern, COOPI, GOAL, Humanistic Opportunity People Progressive Empowerment (HOPPE), LWF, Invisible Children, MEDAIR, Mercy Corps, NRC, SCiU, UNICEF, War Child UK, Windle Trust, WFP, WV, YSA, ZOA	ASB, CARE, Caritas, CEVSI, Concern, CPAR, GOAL, FAO, FHI, Friends of Orphans, ICRC, IPRI, LWF, Mercy Corps, SCiU, URCS, WFP, WV, ZOA	AMREF, AVSI, CCF, CESVI, COOPI, GOAL, ICRC, IMC, IMG, LWF, MEDAIR, Mercy Corps, MSF/H, NUMAT, NWMTs, Population Services International (PSI), TPO, UNFPA, UNICEF, WFP, WHO	ACORD, ASB, AVSI, CARITAS, CARE, CCF, COOPI, CPAR, Friends of Orphans, GOAL, ICRC, MEDAIR, NRC, NUMAT, SCiU, UNFPA, UNHCR, UNICEF, OHCHR, WCC, WCH, WCUK, WORUDET, WV, YSA	AMREF, ASB, AVSI, CESVI, Concern, COOPI, FHI, GOAL, IAS, ICRC, LWF, MEDAIR, Mercy Corps, MSF/H, PSI, UNICEF, WV, ZOA

AMURIA DISTRICT

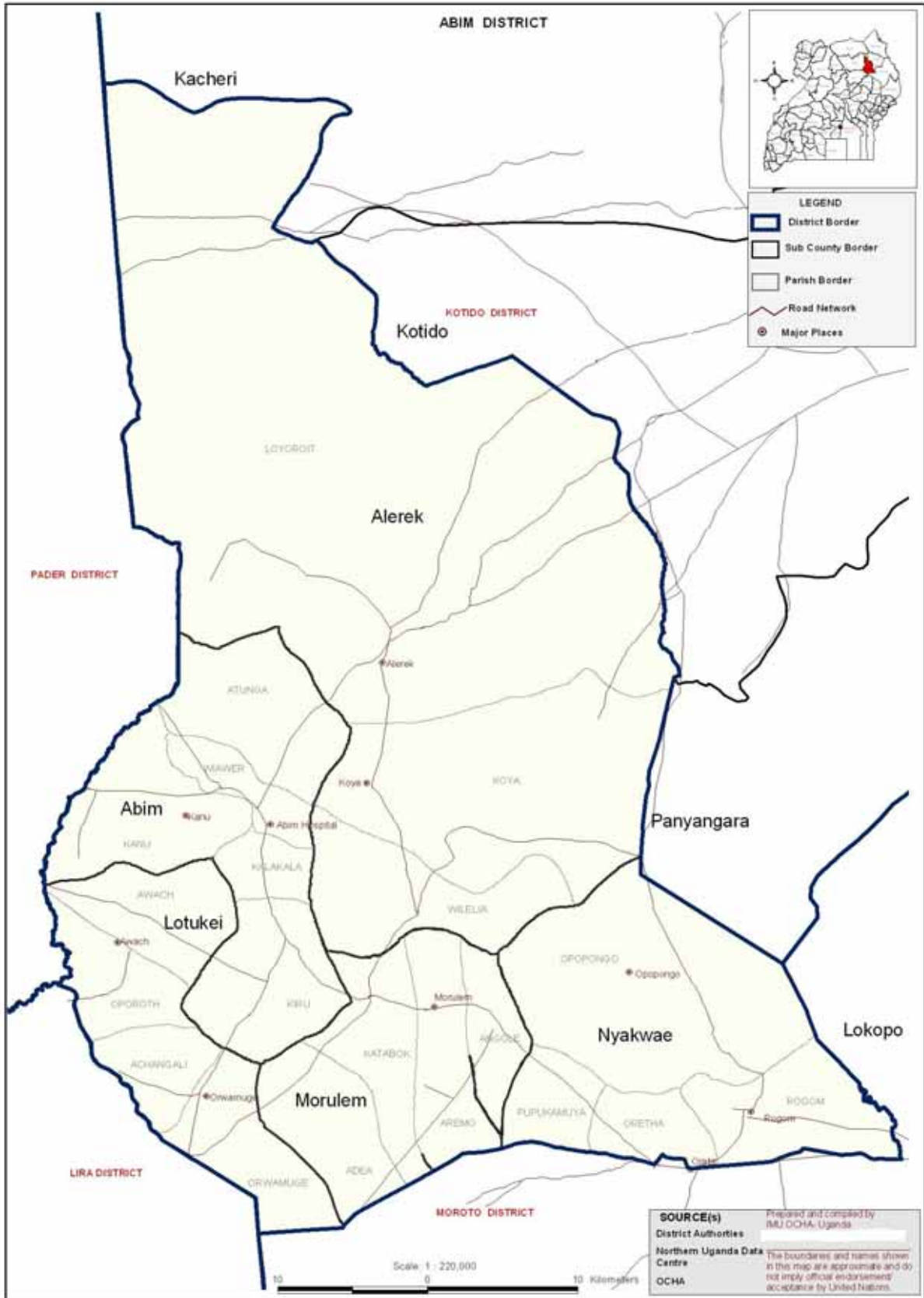
DISTRICT HIGHLIGHTS			
Demographics			
Estimated district population	288,969		
Estimated no. of persons displaced in district†	18, 000		
Estimated IDP and returnee population by location type	<i>IDP camps</i>	<i>Transit Sites</i>	<i>Village of Origin</i>
	14, 000	4, 000	103, 000
No. of locations in district, by type	17	29	264
Health, Nutrition and HIV/AIDS			
	<i>District</i>	<i>National Average</i>	
% children under-five covered by DPT3 vaccinations	57%	90%	
GAM rate	7.5%	6%	
% HIV/AIDS patients on ARV drugs	1.8%	45%	
Water, Sanitation and Hygiene			
	<i>Water</i>	<i>Sanitation</i>	
Access to safe drinking water and sanitation in camps	Data not available	Data not available	
Access to safe drinking water and sanitation in transit sites	Data not available	Data not available	
% population accessing safe drinking water & sanitation in villages of origin	83%	24%	
Food Security			
	<i>Covered</i>	<i>Targeted</i>	
No. beneficiaries receiving GFD	N/A	N/A	
No. households received basic agricultural return package	21,746	15,000	
No. households received comprehensive agricultural assistance	4,420	19,500	
Education			
	<i>District Total</i>	<i>Displaced Schools</i>	<i>Returned Schools</i>
No. of functioning primary schools	111	0	0
% school-age girls enrolled in primary school	49 %		
No. primary schools w/o access to safe water and sanitation	40		
Pupil : latrine ratio (<i>national standard = 1: 40</i>)	1:145		
Pupil : classroom ratio (<i>national standard = 1:55</i>)	1:188		
Teacher : pupil ratio (<i>national standard = 1:55</i>)	1:62		
Protection and Human Rights			
	<i>District</i>		
% S/C with functional service delivery system for GBV survivors	Data not available		
% rape survivors reporting to health facilities w/in 72 hrs who receive appropriate medical care	Data not available		
% S/C with at least one functional community-based child protection structure	30%		
% S/C with appointed child protection lead agency	20%		
% S/C with an appointed CDO	10%		

WHO DOES WHAT WHERE (3W)				
Education	FSAL	HNHA	Protection	WASH
Action Aid, Catholic Education Research Development Organisation (CEREDO), COU, LWF, Pentecostal Churches of Uganda/FIDA International (Finland) (PCU/FIDA), Right to Play (RTP), UNICEF, Youth with a Mission (YWAM)	Action Aid, Africare, ASB, Concern, DRC, FAO, KADIFA (a local farmer association in Uganda), LWF, PCU/FIDA, Pilgrim, Self Help Development International (SHDI), SOCADIDO, Teso Diocesan Development Organisation (TEDDO), TEMEDO, URCS, Vision Terudo, WV	Baylor College, PREFEA, UNICEF, WHO	ASB, CCF, Concern, LWF, OHCHR, RTP, TPO, UNFPA, UNHCR, UNICEF	Action Aid, Africare, ASB, GVC, Integrated Family Development Initiatives (IFDI), UNICEF, URCS

KATAKWI DISTRICT

DISTRICT HIGHLIGHTS			
Demographics			
Estimated district population	149,252		
Estimated no. of persons displaced in district†	12,200		
Estimated IDP and returnee population by location type	<i>IDP camps</i>	<i>Transit Sites</i>	<i>Village of Origin</i>
	12,000	200	53,000
No. of locations in district, by type	44	8	126
Health, Nutrition and HIV/AIDS			
	<i>District</i>	<i>National Average</i>	
% children under-five covered by DPT3 vaccinations	64%	90%	
GAM rate	9.5%	6%	
% HIV/AIDS patients on ARV drugs	11.9%	45%	
Water, Sanitation and Hygiene			
	<i>Water</i>	<i>Sanitation</i>	
Access to safe drinking water and sanitation in camps	Data not available	Data not available	
Access to safe drinking water and sanitation in transit sites	Data not available	Data not available	
% population accessing safe drinking water & sanitation in villages of origin	71%	55%	
Food Security			
	<i>Covered</i>	<i>Targeted</i>	
No. beneficiaries receiving GFD	N/A	N/A	
No. households received basic agricultural return package	20,175	10,000	
No. households received comprehensive agricultural assistance	4,729	19,000	
Education			
	<i>District Total</i>	<i>Displaced Schools</i>	<i>Returned Schools</i>
No. of functioning primary schools	73	1	72
% school-age girls enrolled in primary school	46%		
No. primary schools w/o access to safe water and sanitation	9		
Pupil : latrine ratio (<i>national standard = 1:40</i>)	1:70		
Pupil : classroom ratio (<i>national standard = 1:55</i>)	1:73		
Teacher : pupil ratio (<i>national standard = 1:55</i>)	1:83		
Protection and Human Rights			
	<i>District</i>		
% S/C with functional service delivery system for GBV survivors	None		
% rape survivors reporting to health facilities w/in 72 hrs who receive appropriate medical care	None		
% S/C with at least one functional community-based child protection structure	44%		
% S/C with appointed child protection lead agency	11%		
% S/C with an appointed CDO	0%		

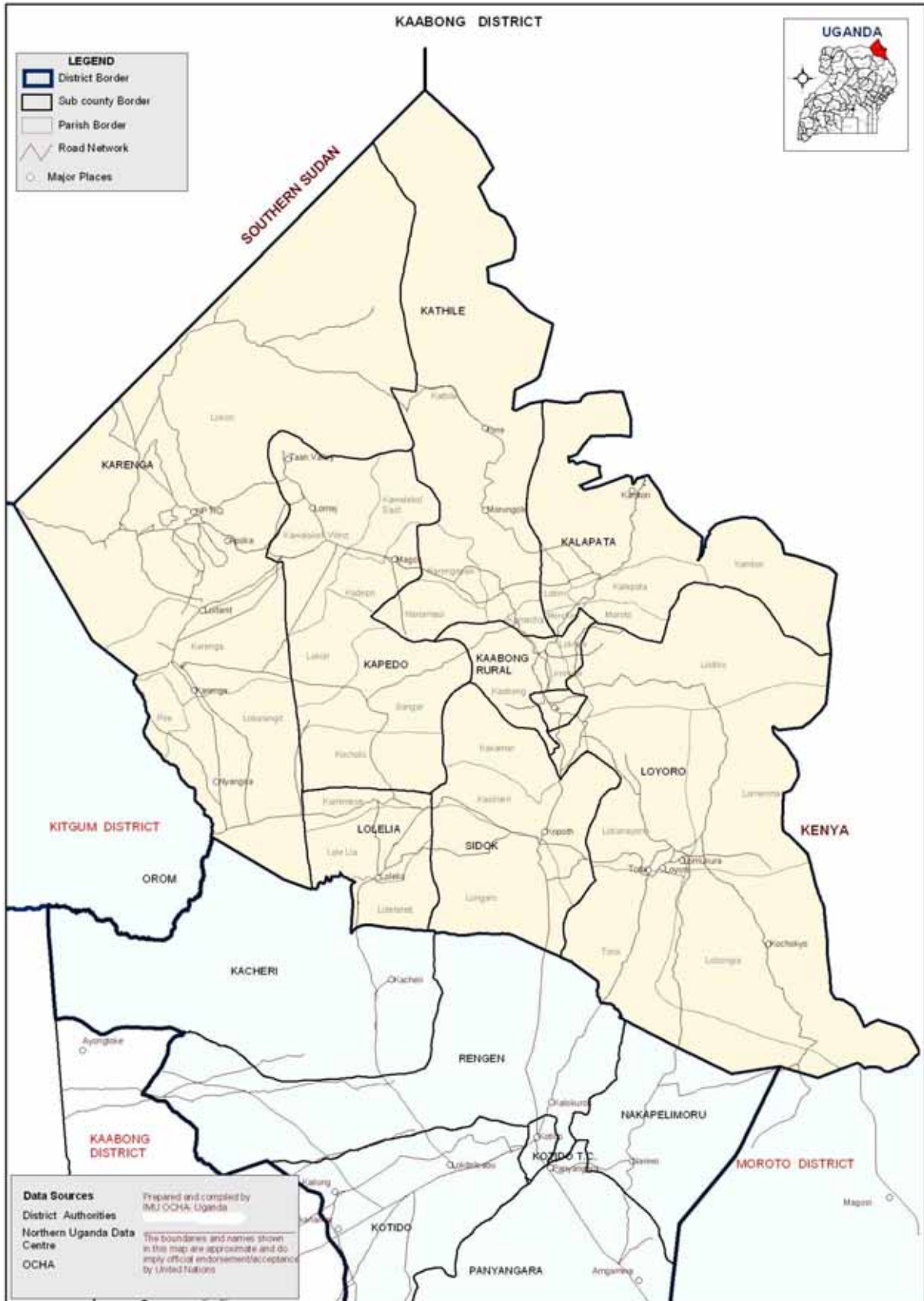
WHO DOES WHAT WHERE (3W)				
Education	FSAL	HNHA	Protection	WASH
Action Aid, CEREDO, COU, Link Community Development (LCD), LWF, RTP	Action Aid, ASB, DRC, FAO, KADIFA, LWF, Pilgrim, SOCADIDO, TEDDO, TEMEDO, Vision Terudo	Action Aid, ASB, HealthNet Uganda (HNU), LWF, Sight Savers, SOCADIDO, TASO, TPO, UNICEF, WFP, WHO	ASB, CCF, GVC, KCV, OHCHR, RTP, TPO, UNFPA, UNHCR, UNICEF	ACAV, Action Aid, ASB, GVC, IFDI, LWF, URCS, Atukot Wera Development Association (WEDA)



ABIM

DISTRICT HIGHLIGHTS		
Demographics		
Estimated district population	54,100	
Food Security		
	<i>Covered</i>	<i>Targeted</i>
No. beneficiaries receiving GFD	21,539	21,539
No. of cattle and sheep/goats covered by vaccinations	FMD: 985 CBPP: 10,820 PPR: 9,885	FMD: 5,000 CBPP: 10,800 PPR: 10,000
Estimated no. of cattle and sheep/goats in district	13,000 cattle and 50,000 sheep/goats	
Estimated no. (%) of cattle and sheep/goats lost to CBPP and PPR	Data not available	
Health, Nutrition and HIV/AIDS		
	<i>District</i>	<i>National Average</i>
% children under-five covered by DPT3 vaccinations	142%	90%
GAM rate	7.2%	6%
SAM rate	1.4%	2%
% HIV/AIDS patients on ARV drugs	22.8%	45%
Water, Sanitation and Hygiene		
	<i>District</i>	<i>National Average</i>
% population with access to safe drinking water	63%	63%
% population with access to safe drinking water w/ trough for animals	0%	N/A
% of population with access to sanitation	23%	62%
Education		
No. of functioning primary schools	46	
% school-age girls enrolled in primary school	49%	
No. primary schools w/o access to safe water and sanitation	42	
Pupil : latrine ratio (<i>national standard = 1: 40</i>)	1:89	
Pupil : classroom ratio (<i>national standard = 1:55</i>)	1:114	
Teacher : pupil ratio (<i>national standard = 1:55</i>)	1:64	
Protection and Human Rights		
	<i>District</i>	
% S/C with GBV referral systems established	None	
% rape survivors reporting to health facilities w/in 72 hrs who receive appropriate medical care	Data not available	
% S/C with community-based child protection structure established	83%	
% S/C with an appointed CDO	50%	
District level child protection coordination mechanism in place (yes / no)	No	

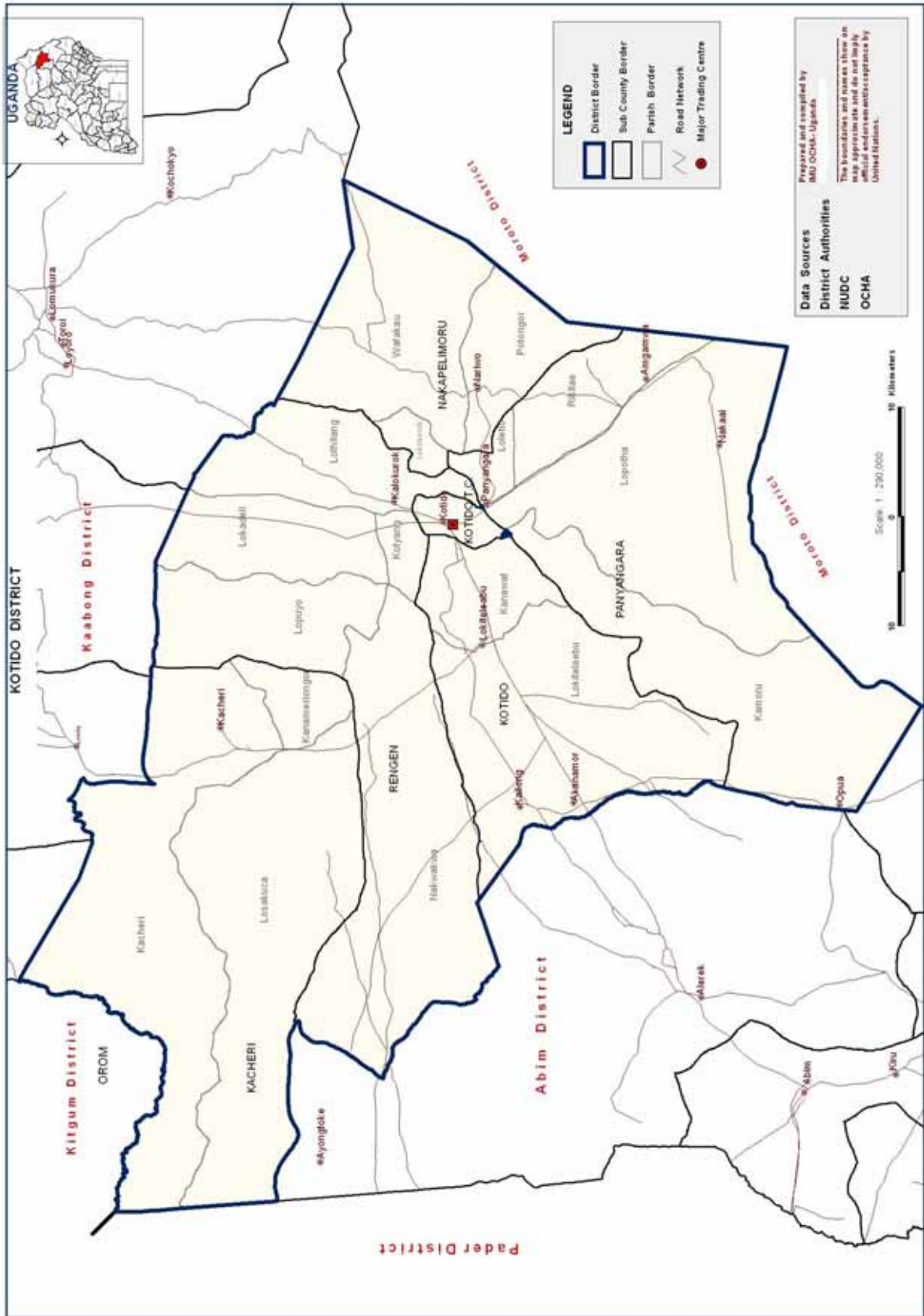
WHO DOES WHAT WHERE (3W)				
Education	FSAL	HNHA	Protection	WASH
ADRA, COU, KDDS, UNICEF, WFP	ADRA, Caritas, CESVI, FAO, COU/KDDS, National Agricultural Advisory Services (NAADS), WFP	Caritas, CUAMM, Malaria Consortium, COU/KDDS, UNFPA, UNICEF, WFP, WHO	OHCHR, UHRC, UNFPA, UNICEF, COU/KDDS, Caritas	ADRA, Caritas, CESVI, KDDS, MEDAIR, UNICEF, COU/KDDS



KAABONG

DISTRICT HIGHLIGHTS		
Demographics		
Estimated district population	301,200	
Food Security		
	<i>Covered</i>	<i>Targeted</i>
No. beneficiaries receiving GFD	168,332	168,332
No. of cattle and sheep/goats covered by vaccinations	CBPP: 30,000 PPR: 46,377	680,000
Estimated no. of cattle and sheep/goats in district	180,000 cattle and 500,000 sheep/goats	
Estimated no. (%) of cattle and sheep/goats lost to CBPP and PPR	Data not available	
Health, Nutrition and HIV/AIDS		
	<i>District</i>	<i>National Average</i>
% children under-five covered by DPT3 vaccinations	50%	90%
GAM rate	8.6%	6%
SAM rate	1%	2%
% HIV/AIDS patients on ARV drugs	29.5%	45%
Water, Sanitation and Hygiene		
	<i>District</i>	<i>National Average</i>
% population with access to safe drinking water	12%	63%
% population with access to safe drinking water w/ trough for animals	3.7%	N/A
% of population with access to sanitation	2%	62%
Education		
No. of functioning primary schools	66	
% school-age girls enrolled in primary school	45%	
No. primary schools w/o access to safe water and sanitation	21 w/o latrines, 15 w/o safe water	
Pupil : latrine ratio (<i>national standard = 1: 40</i>)	1:105	
Pupil : classroom ratio (<i>national standard = 1:55</i>)	1:111	
Teacher : pupil ratio (<i>national standard = 1:55</i>)	1:81	
Protection and Human Rights		
	<i>District</i>	
% S/C with GBV referral systems established	None	
% rape survivors reporting to health facilities w/in 72 hrs who receive appropriate medical care	Data not available	
% S/C with community-based child protection structure established	44%	
% S/C with an appointed CDO	70%	
District level child protection coordination mechanism in place (yes / no)	No	

WHO DOES WHAT WHERE (3W)				
Education	FSAL	HNHA	Protection	WASH
ADRA, Dodoth Agropastoral Development Organisation (DADO), MEDAIR, Kotido Peace Initiative (KOPEIN), UNICEF, WFP	ADRA, Caritas, COU/KDDS, DADO, FAO, MEDAIR, Uganda National Agricultural Advisory Services (NAADS), Oxfam, WFP	ACF, Caritas, COU/KDDS CUAMM, Malaria Consortium, MSF, Oxfam, UNFPA, UNICEF, WFP, WHO	Caritas, COU/KDDS, DADO, KOPEIN, OHCHR, SCiU, UHRC, UNFPA, UNICEF	ACF, ADRA, Caritas, DADO, MEDAIR, MSF, Oxfam, UNICEF



KOTIDO

DISTRICT HIGHLIGHTS		
Demographics		
Estimated district population	179,300	
Food Security		
	<i>Covered</i>	<i>Targeted</i>
No. beneficiaries receiving GFD	119,525	119,525
No. of cattle and sheep/goats covered by vaccinations	CBPP: 40,000 PPR: 135,000	1,300,000
Estimated no. of cattle and sheep/goats in district	500,000 cattle and 800,000 sheep/goats	
Estimated no. (%) of cattle and sheep/goats lost to CBPP and PPR	Data not available	
Health, Nutrition and HIV/AIDS		
	<i>District</i>	<i>National Average</i>
% children under-five covered by DPT3 vaccinations	110.9%	90%
GAM rate	10.5%	6%
SAM rate	1.1%	2%
% HIV/AIDS patients on ARV drugs	27.6%	45%
Water, Sanitation and Hygiene		
	<i>District</i>	<i>National Average</i>
% population with access to safe drinking water	37%	63%
% population with access to safe drinking water w/ trough for animals	2.2%	N/A
% of population with access to sanitation	2%	62%
Education		
No. of functioning primary schools	26	
% school-age girls enrolled in primary school	42%	
No. primary schools w/o access to safe water and sanitation	21	
Pupil : latrine ratio (<i>national standard = 1: 40</i>)	1:55	
Pupil : classroom ratio (<i>national standard = 1:55</i>)	1:90	
Teacher : pupil ratio (<i>national standard = 1:55</i>)	1:93	
Protection and Human Rights		
	<i>District</i>	
% S/C with GBV referral systems established	None	
% rape survivors reporting to health facilities w/in 72 hrs who receive appropriate medical care	1%	
% S/C with community-based child protection structure established	50%	
% S/C with an appointed CDO	83%	
District level child protection coordination mechanism in place (yes / no)	No	

WHO DOES WHAT WHERE (3W)				
Education	FSAL	HNHA	Protection	WASH
ADRA, Caritas, COU/KDDS, Jie Community Animal Health Worker's Association (JICAHWA), Oxfam, SCiU, UNICEF, WFP	ADRA, Caritas, FAO, JICAHWA, NAADS, Oxfam, WFP	COU/KDDS CUAMM, FAO, Malaria Consortium, Oxfam, UNFPA, UNICEF, WFP, WHO	COU/KDDS, Caritas, KOPEIN, IRC, OHCHR, SCiU, UHRC, UNFPA, UNICEF	ADRA, Caritas, COU/KDDS, IRC, Oxfam, UNICEF

MOROTO

DISTRICT HIGHLIGHTS		
Demographics		
Estimated district population	265,326	
Food Security		
	<i>Covered</i>	<i>Targeted</i>
No. beneficiaries receiving GFD	288,120	288,120
No. of cattle and sheep/goats covered by vaccinations	PPR: 6,000 CBPP: 34,441	1,000,000
Estimated no. of cattle and sheep/goats in district	700,000 goats and sheep; 300,000 cattle	
Estimated no. (%) of cattle and sheep/goats lost to CBPP and PPR	Approx. 100,000 in total	
Health, Nutrition and HIV/AIDS		
	<i>District</i>	<i>National Average</i>
% children under-five covered by DPT3 vaccinations	94%	90%
GAM rate	12.7%	6%
SAM rate	1.9%	2%
% HIV/AIDS patients on ARV drugs	11.5%	45%
Water, Sanitation and Hygiene		
	<i>District</i>	<i>National Average</i>
% population with access to safe drinking water	51%	63%
% population with access to safe drinking water w/ trough for animals	8.2%	N/A
% of population with access to sanitation	10%	62%
Education		
No. of functioning primary schools	59	
% school-age girls enrolled in primary school	47%	
No. primary schools w/o access to safe water and sanitation	11 no latrine, 18 no safe water	
Pupil : latrine ratio (<i>national standard = 1: 40</i>)	1:42	
Pupil : classroom ratio (<i>national standard = 1:55</i>)	1:55	
Teacher : pupil ratio (<i>national standard = 1:55</i>)	1:68	
Protection and Human Rights		
	<i>District</i>	
% S/C with GBV referral systems established	None	
% rape survivors reporting to health facilities w/in 72 hrs who receive appropriate medical care	50%	
% S/C with community-based child protection structure established	45%	
% S/C with an appointed CDO	9%	
District level child protection coordination mechanism in place (yes / no)	Yes	

WHO DOES WHAT WHERE (3W)				
Education	FSAL	HNHA	Protection	WASH
ADRA, Catholic Diocese, C&D, Turkana Peace Network (RIAM), SCiU, TKL, UNICEF, WFP	BOZIDEP, Caritas, C&D, CHIPS, FAO, ISP, KACHEP, KADP, MADEO, NAADS, NASRI (NARO), SCiU, SVI, VSF-B, WFP	CUAMM, Moroto Diocese, UNFPA, UNICEF, WFP, WHO	BISREP, C&D, IRC, KDDP, Moroto Widows Save Lives, OHCHR, SCiU, TKL, UHRC, UNFPA, UNICEF	C&D, Clide Consultancy, KADP, Matheniko Development Forum (MADEFO), UNICEF

NAKAPIRIPIRIT

DISTRICT HIGHLIGHTS		
Demographics		
Estimated district population	217,432	
Food Security		
	<i>Covered</i>	<i>Targeted</i>
No. beneficiaries receiving GFD	154,417	154,417
No. of cattle and sheep/goats covered by vaccinations	CBPP: 34,441	610,000
Estimated no. of cattle and sheep/goats in district	350,000 goats and sheep; 260,000 heads of cattle	
Estimated no. (%) of cattle and sheep/goats lost to CBPP and PPR	Approx. 50,000 in total	
Health, Nutrition and HIV/AIDS		
	<i>District</i>	<i>National Average</i>
% children under-five covered by DPT3 vaccinations	53.8%	90%
GAM rate	8.4%	6%
SAM rate	1.9%	2%
% HIV/AIDS patients on ARV drugs	1.1%	45%
Water, Sanitation and Hygiene		
	<i>District</i>	<i>National Average</i>
% population with access to safe drinking water	42%	63%
% population with access to safe drinking water w/ trough for animals	6%	N/A
% of population with access to sanitation	3%	62%
Education		
No. of functioning primary schools	55	
% school-age girls enrolled primary school	51%	
No. primary schools w/o access to safe water and sanitation	20	
Pupil : latrine ratio (<i>national standard = 1: 40</i>)	1:55	
Pupil : classroom ratio (<i>national standard = 1:55</i>)	1:73	
Teacher : pupil ratio (<i>national standard = 1:55</i>)	1:68	
Protection and Human Rights		
	<i>District</i>	
% S/C with GBV referral systems established	None	
% rape survivors reporting to health facilities w/in 72 hrs who receive appropriate medical care	50%	
% S/C with community-based child protection structure established	None	
% S/C with an appointed CDO	100%	
District level child protection coordination mechanism in place (yes / no)	No	

WHO DOES WHAT WHERE (3W)				
Education	FSAL	HNHA	Protection	WASH
Catholic Diocese, COU, IRC, RIAM, SCiU, TKL, UNICEF, WFP	ACTED, Caritas, C&D, FAO, Happy Cow, Karamoja Christian Ethno-veterinary Programme (KACHEP), KADP, NAADS, National Agricultural Research Organisation (NASRI [NARO]), SCiU, SVI, WFP	UNICEF, WHO	IRC, KDDP, OHCHR, SCiU, TKL, TPO, UHRC, UNFPA, UNICEF	ACTED, C&D, CUAMM, KADP, UNICEF

