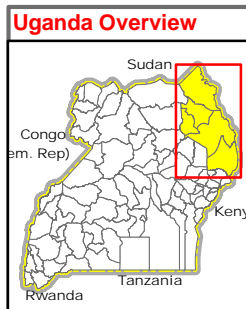
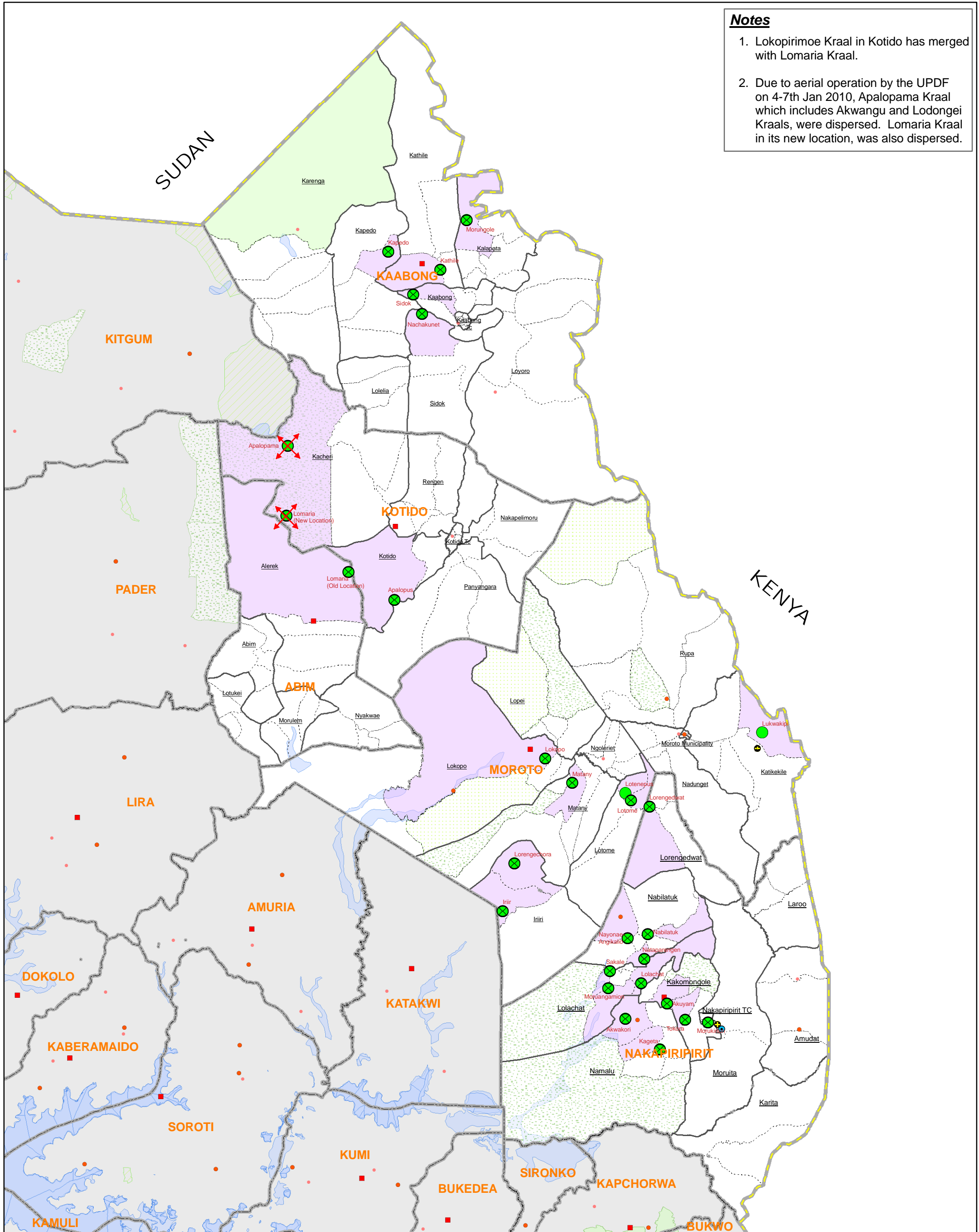


### Notes

1. Lokopirimoe Kraal in Kotido has merged with Lomaria Kraal.
2. Due to aerial operation by the UPDF on 4-7th Jan 2010, Apalopama Kraal which includes Akwangu and Lodongei Kraals, were dispersed. Lomaria Kraal in its new location, was also dispersed.



### Legend

- |  |  |   |
|--|--|---|
| <ul style="list-style-type: none"> <li><span style="display:inline-block; width:10px; height:10px; background-color:lightblue; border:1px solid black;"></span> Kraal Parish</li> <li><b>Type of Kraals</b></li> <li><span style="display:inline-block; width:10px; height:10px; border:2px solid green; border-radius:50%;"></span> Protected (26 Nos.)</li> <li><span style="display:inline-block; width:10px; height:10px; border:2px solid red; border-radius:50%;"></span> Unprotected (2 Nos.)</li> <li><span style="display:inline-block; width:10px; height:10px; border:2px dashed red; border-radius:50%;"></span> Dispersed Kraals</li> </ul> | <ul style="list-style-type: none"> <li><span style="display:inline-block; width:10px; height:10px; background-color:lightblue; border:1px solid black;"></span> District Admin Centres</li> <li><span style="display:inline-block; width:10px; height:10px; background-color:lightblue; border:1px solid black;"></span> County Admin Centres</li> <li><span style="display:inline-block; width:10px; height:10px; background-color:lightblue; border:1px solid black;"></span> Towns</li> <li><span style="display:inline-block; width:10px; height:10px; background-color:lightblue; border:1px solid black;"></span> Motorable Road</li> <li><span style="display:inline-block; width:10px; height:10px; border:1px solid black;"></span> National Boundary</li> <li><span style="display:inline-block; width:10px; height:10px; border:1px solid black;"></span> District Boundary</li> <li><span style="display:inline-block; width:10px; height:10px; border:1px solid black;"></span> Sub-County Boundary</li> <li><span style="display:inline-block; width:10px; height:10px; border:1px dashed black;"></span> Parish Boundary</li> </ul> | <ul style="list-style-type: none"> <li><span style="display:inline-block; width:10px; height:10px; background-color:lightgreen; border:1px solid black;"></span> Forest Reserve</li> <li><span style="display:inline-block; width:10px; height:10px; background-color:lightgreen; border:1px solid black;"></span> Game Reserve</li> <li><span style="display:inline-block; width:10px; height:10px; background-color:lightgreen; border:1px solid black;"></span> National Park</li> <li><span style="display:inline-block; width:10px; height:10px; background-color:lightgreen; border:1px solid black;"></span> Rangeland</li> <li><span style="display:inline-block; width:10px; height:10px; background-color:lightblue; border:1px solid black;"></span> Water Body/Lakes</li> </ul> |
|--|--|---|

**Data Sources:**  
 Admin Boundaries - UBOS, 2006  
 District/County Admin Centres - UBOS, 2006  
 Road Network - FAO  
 Town/Settlement - Humanitarian Agencies in Districts.  
 Kraal Locations - UNOCHA, Nov 2009/Jan 2010

**Draft**

This map is a work in progress. Please contact the IMU/OCHA as soon as possible with any corrections.

Map Disclaimer:  
 The boundaries and names shown and the designations used on this map do not imply official endorsement or acceptance by the United Nations.

Map Prepare Date: 29 Dec 2009 (IMU Kampala/OCHA)  
 Last Updated Date: 15 Jan 2010

File: UG-Livestock-04\_A3\_15Jan10\_Karamoja Sub-Region Kraal Locations