

LEGEND

- ▲ IDP camp
- Parish boundary
- Road
- Tracks
- Camp extend

Status of the hut

- Decommissioned (2350)
- Household recorded (645)

Hut Sampled
(every 15 huts selected randomly)

- Hut sampled (32)

Gender Balance

- Male
- Female

Water Facilities

- Borehole
- Public Water Tap
- Water Tank

Block

- Akworo
- Koch
- Lamola
- Lukwor
- Okidi
- Oryang

Services

- Community Services
- Education
- Health
- Operation
- Security

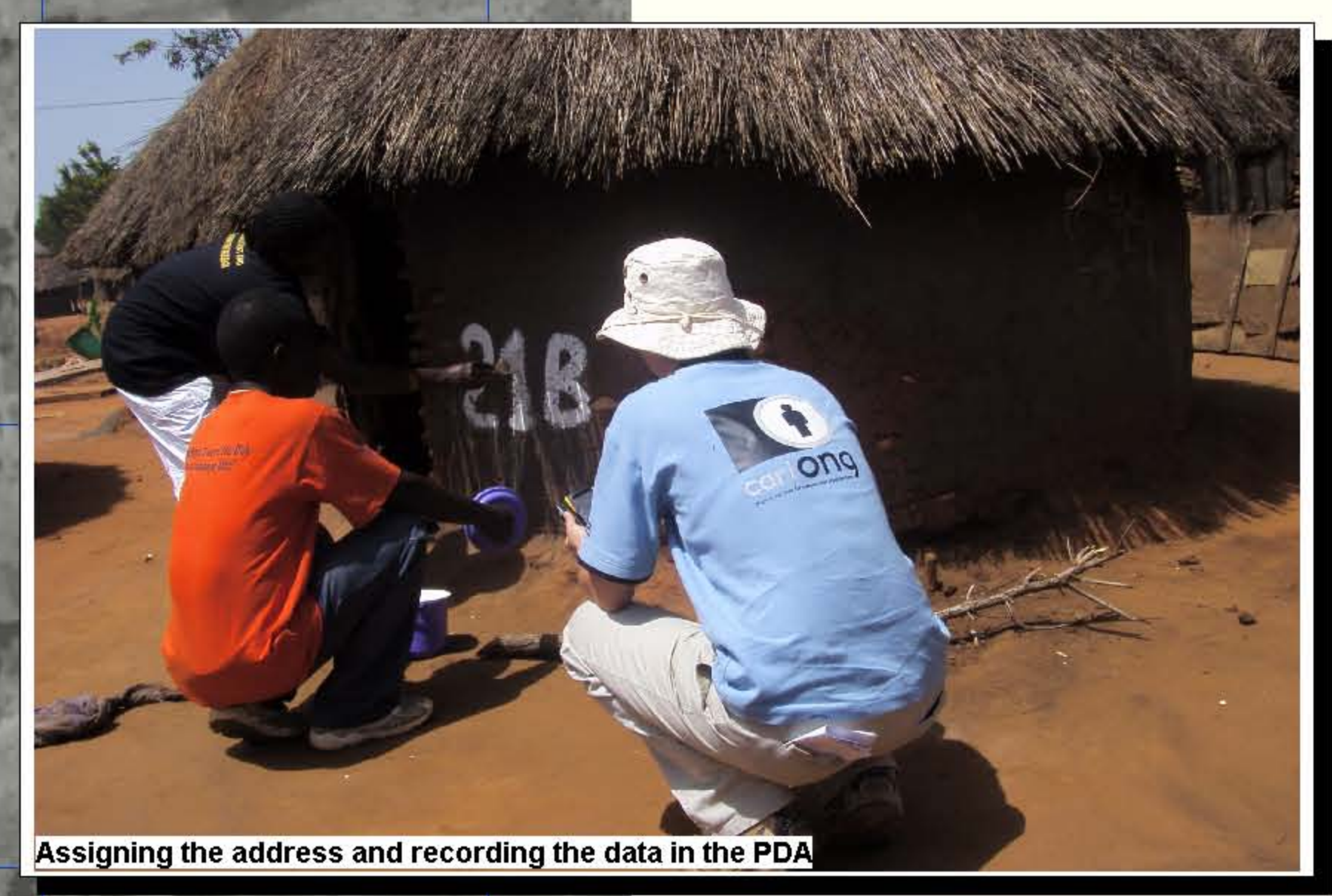
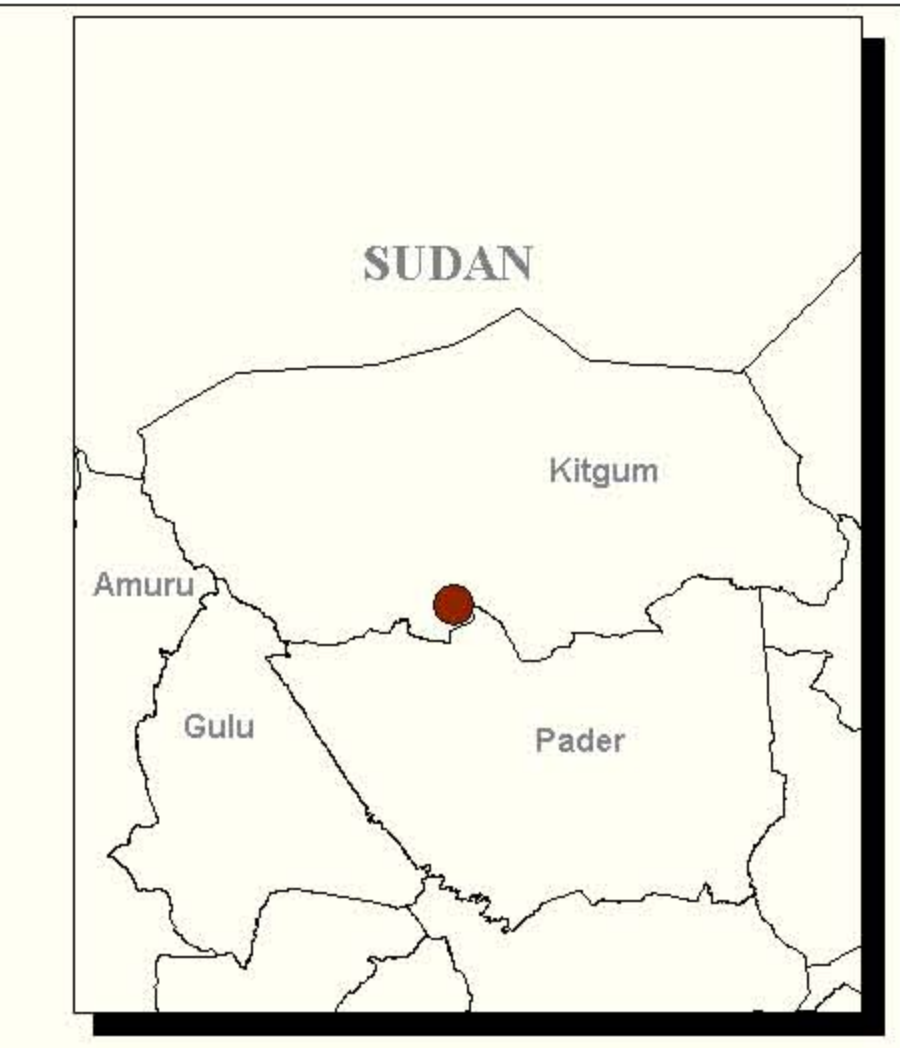
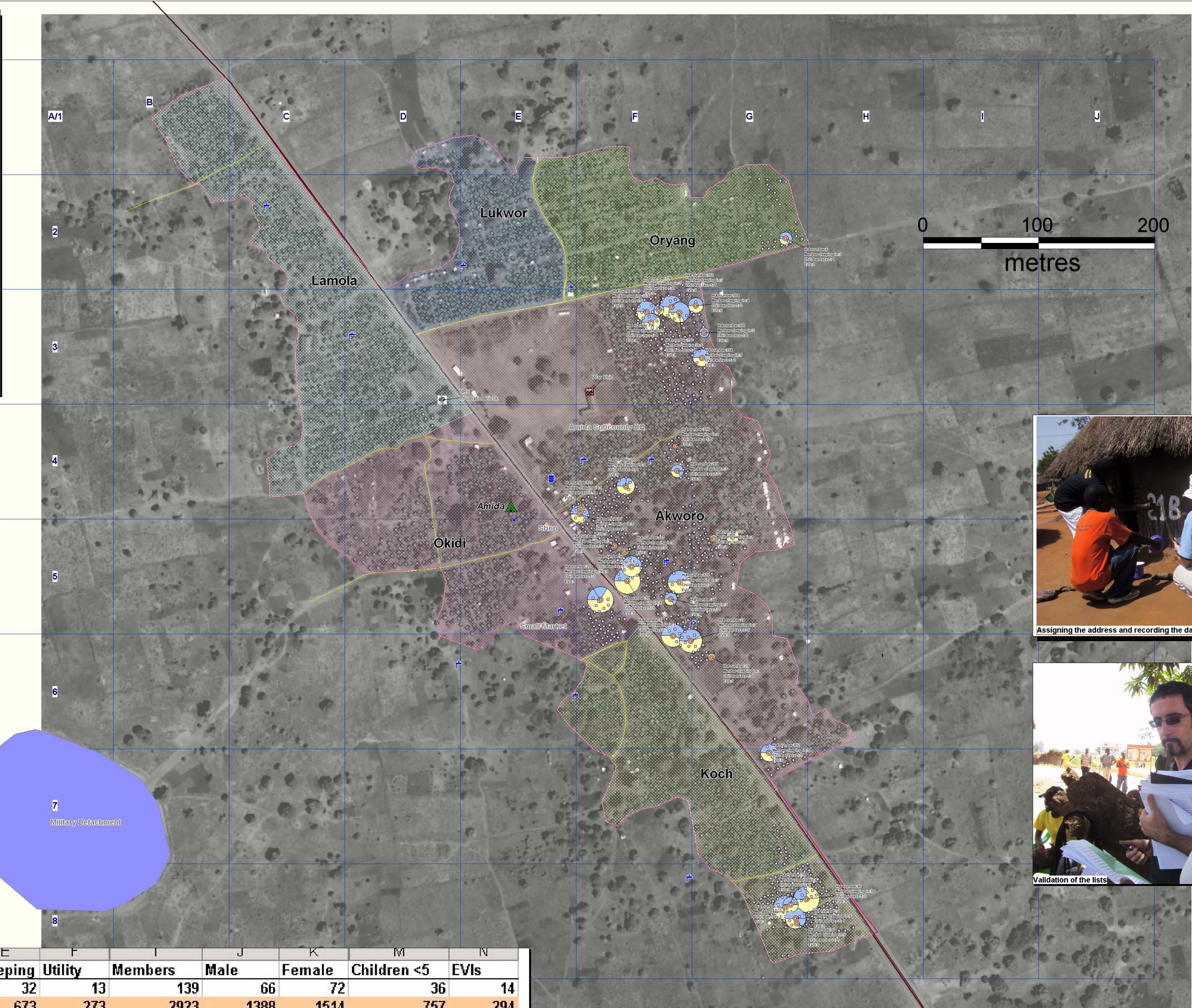
Beginning of 2008,
2995 huts were extracted/digitized

Count	Block Name
442	Oryang
327	Lukwor
880	Akworo
505	Koch
367	Okidi
504	Lamola

June 2008,
645 households were counted/
registered with an address
system

Count	Block Name
25	Oryang
454	Akworo
121	Koch
40	Okidi
5	Lamola

In Amida, the average of huts per household is 1.6 (933 sleeping hut, 221 utility huts, 87 empty huts)



Block	Sleeping	Utility	Members	Male	Female	Children <5	EVIs
Total Sample	32	13	139	66	72	36	14
Total Extrapolate	673	273	2923	1388	1514	757	294

