

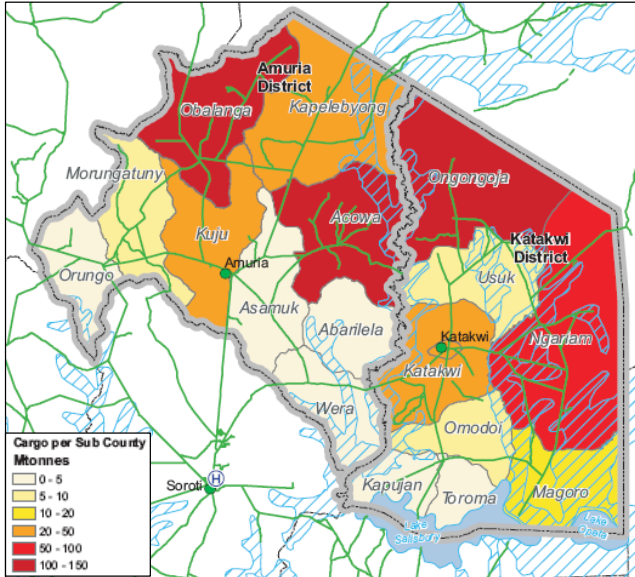


SITUATION REPORT N° 15 – UGANDA FLOODS – 20 NOVEMBER 2007

HIGHLIGHTS

- ROAD CONDITIONS AND ROAD ACCESSIBILITY IMPROVED
- MEASLES OUTBREAK CONFIRMED IN KUMI AND BUKEDEA DISTRICTS; RESPONSE ONGOING
- FIRST PHASE OF EMERGENCY RESPONSE NEARING END; CLUSTERS DISCUSSING STRATEGIC PRIORITIES FOR STABILIZATION PHASE AND LINK WITH RECOVERY

The information contained in this report has been gathered by the Office for the Coordination of Humanitarian Affairs (OCHA) from sources including the Government of Uganda, UN agencies, Non-Governmental Organizations and the Red Cross movement.



Map 1: Helicopter air cargo delivery by metric tonne per sub-county

Situation Overview

1. Overall road conditions and access in the Teso sub-region has improved as dry weather continues. There is an urgent need to repair and rehabilitate roads, especially in Katakwi and Amuria districts, in order to maintain access to the affected populations.
2. In Katakwi, the main Soroti to Katakwi road is now passable, with road rehabilitation in progress. However, the road from Toromo to Magoro remains impassable.
3. In Amuria, the section of road from Morungatuny to Obalanga (6.3 km) around Aita bridge remains closed and requires urgent repair, while a 4.9 kilometre (km) section of the road from Obalanga - Kapelebyong has culverts that were washed away.
4. In Soroti, the road to Soroti via Agu Bridge is dry and passable, but Awoja Bridge is still officially closed although the water level has gone down.

5. A measles outbreak has declared in Kumi and Bukedea districts. Immediate responses include health promotion and social mobilisation through film vans, radio talk shows and accelerated routine immunisation at health facilities. A request for additional supplies and vaccines to conduct a localized mass immunisation campaign in the two districts has been submitted to Uganda National Expanded Programme on Immunisation (UNEPI) and delivery is expected before the end of the week.

6. Some clusters have completed the first phase of the emergency response to the floods and discontinued the weekly cluster-led coordination meetings held in Soroti. Coordination tools are being handed over to the districts to continue with district-based coordination work. The Inter Agency Standing Committee (IASC) guidelines on "Process to Merge or Modify or Close a Cluster/Sub-Cluster" and a review of the cluster operations will be followed in closure of cluster-led coordination.

7. The User Group and Heads of Clusters based in Soroti have reached a resolution to close the Logistics Cluster, which was activated in response to the floods in Eastern Uganda. This decision is based on improved accessibility by road in the region and reduced demand for air operations. The closing of the cluster has been done according to the Inter Agency Standing Committee (IASC) guidelines and following a review of each of the services provided by the cluster during the flood response, namely air operations, warehousing, GIS mapping, and coordination.

Priority Needs

8. The clusters are currently revising priorities according to the work done so far and the prevailing situation. After IASC endorsement, the revised priorities will be included into the second Flash Appeal update due at the beginning of December.

Humanitarian Response

Since the issuance of the last Situation Report, the following updates have been received:

Camp Coordination and Camp Management

Cluster lead: UNHCR

Cluster member: ASB

9. Camp management will operate from five different locations with three teams in Katakwi and two in Amuria. The selection of the areas was based on a simple profiling, population concentration and suitability to cover at least five other camp areas from each base area of the Resident Teams.
10. In addition, five IDP camps in Katakwi have already identified for possible return and four other areas were visited during the week with the same intention to check their interest in return. Two were already a return village. One with between 95-100 per cent return, as stated by the village authorities and confirmed by village returnees. The major problem facing returnee families is access to safe water. The only water source is located about 2.5 km away, and is being shared by the adjacent villages.
11. The second village visited has recorded a return rate of 50 per cent. As the people indicated, drinking water issue is the main obstacle for the return of the remaining 50 per cent.
12. A joint visit will be undertaken to the five camps in Katakwi to establish the voluntariness of the wish to return and to take the necessary next step to facilitate return in collaboration with other actors. Other areas witnessing high rates of return, like Obalanga and Ogongoja will also be visited with the same aim of establishing existing gaps in service availability so as to render the return a durable one.

Early Recovery

Cluster Lead: UNDP

Cluster members: URCS, Premiere Urgence, Socadido

13. A more comprehensive needs assessment is currently being done in close collaboration with other clusters using the IASC assessment tool.
14. Ongoing initiatives in the cluster include:
 - Repair and rehabilitation of feeder and access roads, tree planting and reforestation, Agro-forestry and distribution of food crop planting materials.
 - Support to the establishment of the OPM office (Department of Disaster Preparedness) in Soroti
 - Mapping the extent of coverage and services being provided in order to facilitate support to the

strengthening of the Local Council administrative system.

- Identification of training needs of the Sub County Disaster Management Committees (SCDMC) for the formulation a training programme.
- Support to the return of IDPs in the District of Katakwi. Other clusters have already established plans to provide housing support to IDPs and flood-affected communities.

Education

Cluster Members: CEREDO, PCU/FIDA International, Global Care, WFP, World Vision

15. The 35 tents that were recently used to provide emergency shelter for PLE candidates will be reallocated to 13 schools with dilapidated classrooms in Amuria, Katakwi, Manafwa, Sironko, Bukwo and Bududa districts to provide temporary learning/teaching space.

Food Security

Cluster Lead: FAO and WFP

Partners in the sector: FAO, SOCADIDO, LWF, World Vision, TEMEDO, TEDDO, URCS, War on Want, Local Governments, Vision TERUDO, Pilgrim, PAG church, Uganda Scouts, BEKOA, Premier Urgence

16. 10,663 households in Ngariam, Ongongoja, Magoro and Usuk sub counties in Katakwi district received vegetable kits. The cumulative total is now 20,000 households, which is already 100 per cent achievement of the cluster target. Of these 9,337 households are from Amuria district (Obalanga, Kapelebyong and Acowa sub counties) and in Katakwi. The kits contain eggplants, local spinach, sim-sim, cowpeas, sorghum and two hoes and a knife for each household.
17. Highlights of the assessment report of the sweet potato caterpillar infestation indicate that there is no significant threat so far from this pest. In most of the areas visited, the pests had changed to a non-dangerous pupa stage and in some areas it has died as a result of spraying done by the sub-county local governments and farmers themselves. Above all, in most of the infested fields, the crops were at maturity stage, and therefore there will not be any significant damage or effects on the expected yield of the crop. The pest has tendency of being localized geographically and also in a given field. Nonetheless another check will be made for a possible recycle of planting materials if required.
18. The first cycle of food aid distribution in the Teso and Bugiso sub-regions has been completed. A total of 30,826 families with a total population of 184,956 flood-affected persons were reached with 3,057 metric tons of food at a full ration for one month.
19. The next cycle of food distribution (targeting, ration levels and duration of intervention) will be guided

by the results of Crop and Food Supply Assessment (CFSA), Rapid Nutrition Assessment (RNA) and Emergency Food Security Assessment (EFSA), which have been conducted in the region.

Health, Nutrition and HIV/AIDS

Cluster lead: WHO

Cluster members: UNICEF, WHO, Red Cross Society, Malteser, Pilgrim, MOH, Youth with Mission, Uganda Assemblies of God, Germany Emergency Doctors, Soroti Diocese, Oxfam, PSI, Malaria Consortium, THW, UNFPA

20. Five mobile clinic teams attended to 2,403 patients in areas far away from functional health facilities in Katakwi, Amuria, Kaberamaido, Kumi and Soroti
21. A joint team comprised of members of the WASH and Health clusters and Amuria DHT responded to 27 dysentery cases reported in Otubeti village in Orungo sub-county in Amuria district. Stool samples were taken to Lira hospital laboratory for analysis to exclude shigellosis. Water samples were also obtained for analysis.
22. In the last week, the last two cholera preparedness kits were airlifted to Bukwa and Kapchorwa districts.
23. Magoro HC III received a motorcycle to ease transport in the worst flood-affected northern part of Katakwi district.
24. Ongoing activities in the cluster since the last report include nutritional assessment in the districts of Teso, Sebei and Bugisu regions and health education with emphasis on control of malaria, diarrhoeal diseases and measles in the districts of Sironko, Kapchorwa, Kumi and Bukedea, Katakwi and Amuria using film vans and VHTs.

Logistics

Cluster lead: WFP

25. Weekly coordination meetings for the cluster closed as per the agreement with members and in line with Logistics Cluster exit strategy. The IASC guidelines on the modification/closure of a Cluster were applied to close the cluster to ensure correct procedures are followed in order to maintain a transparent approach with partners.
26. To date, the interagency helicopter operation has airlifted over 682.6mt of relief supplies and carried over 706 passengers (mostly distribution teams) to inaccessible areas. Current operational capacity consists of one Mi-8MTV helicopter. Air operation closure is scheduled for 25 November.
27. The interagency NFI warehouse in Soroti (500m² capacities) will continue to operate until 10 December.

28. In Katakwi Town, 350m² warehouse is being closed.
29. Water levels have dropped significantly in the area around Awoja bridge. Consequently, the boat provided by WFP as an interagency resource is no longer required and it ceased operations on 16 November.
30. According to road assessments conducted by the cluster, road conditions and road access have improved. In Katakwi, the main Soroti to Katakwi road is passable and rehabilitation is in progress. There are plans to rehabilitate a 6km stretch of road south of Ngariam Corner as part of the early recovery programme to support long term improvements in access.
31. In Amuria, the road situation has also improved due to the dry weather during last week. However, some roads in areas around Ajelik in the Acowa sub-county and in Oblanga sub-county are still in poor condition and only passable by four wheel drive vehicles. A section of road from Morungatuny to Obalanga (6.3km) around Aita bridge requires urgent repair and the bridge remains closed.
32. The road to Soroti via Agu Bridge is dry and passable by all vehicles. Awoja, bridge is still officially closed, although the water level has gone down.
33. In Katakwi, the road from Toromo to Magoro is still impassable by heavy vehicles.

Protection

Cluster Lead: UNHCR

Cluster members: ASB, CCF, Grassland Foundation, KCV, OHCHR, TPO, UHRC, UNICEF,

34. Child protection/Gender based Violence (GBV) assessments have been completed and monitoring is ongoing. To date, a total of 3,121 extremely vulnerable households have been identified and received support in form of food and non food items.
35. An increase in domestic violence has been recorded since the onset of the floods, mainly over the control of relief items and household property and due to food shortages in the households. These cases have been forwarded to the relevant local authorities and the Child Protection agencies are organising community education and awareness-raising activities in response to the GBV issues identified in the affected areas.

Shelter and Non Food Items (NFI)

Cluster Lead: UNICEF

Cluster members: Action Aid, ADRA, ASB, CARE, CCF, Concern, IOM, LWF, Malaria Consortium, Oxfam, PSI, TEDDO, TPO, URCS, War on Want, World Vision

36. Shelter and Non Food Items (NFI) cluster is set to hand over its coordination role (system tools, matrix and distribution plans) to the districts. The cluster expects to complete the last phase of distributions by end of the month. Other items such as safe water kits which have been part of the NFI kits will be handled by the WASH Cluster. The cluster has agreed to maintain a contingency stock of up to 3,000 family kits for Teso and Bugisu Sub regions.
37. Since the onset of the emergency response, a total of 44,040 NFI (Family kits) have been distributed to 44,040 households in Teso and Bugisu regions; and 29,872 water kits distributed to 29,872 households in the same regions.

Water Sanitation and Hygiene (WASH)

Cluster lead: UNICEF

Cluster members: ACTED, ASB/GVC, CCF, CESVI, CHIPS, Concern, IOM, LWF, Oxfam, Premiere Urgence, PSI, SOCADIDO, THW, URCS Water Aid, Water Mission International, World Vision

38. Semi -permanent latrines constructed in 16 schools in Bukedea and Amuria.
39. On new borehole constructed in Takaramiam Village, Ajaki Sub-county, Amuria District serving approximately 100 families.
40. Facilitation of collection of an additional 14 water samples from a range of Districts throughout Teso, Bugisu, and Sebei Sub-Regions
41. Emergency WASH assessment undertaken in Orungo Village, Orungo Sub-County in Amuria District, as a direct response to 27 Dysentery cases reported by a mobile clinic. The results have proven two of the three sources to be highly contaminated and a distribution of House Hold Safe Water Kits to 100 families in the area will take place.
42. Ongoing activities in the cluster since the last report are Hygiene Promotion through Village

Health Teams (VHTs) with assistance from 45 Hygiene Promotion support staff in Amuria and Katakwi, community mobilisation and sensitisation through the Ministry of Health (MoH) Films vans in Districts Kumi and Bukedia and emergency supply of treated water in Oongora (Katakwi) for approximately 500 families.

43. The cluster continues to experience two major challenges in emergency latrine construction in the community and the lack of emergency hand pump/borehole repair teams required to ensure safe water sources before the currently distributed House Hold Safe Water Kits have been exhausted.

Coordination

44. Shelter and NFI, Education and Logistics clusters have closed the weekly cluster lead coordination meetings in Soroti. The other clusters will continue to hold weekly coordination meetings.
45. **OCHA will continue to issue regular Situation Reports on a weekly basis. Agencies participating in the floods response are requested to report through the following Soroti-based cluster leads:**

CCCM – Mohammed God Boudin (UNHCR)
 Early Recovery – Winston Camarinas (UNDP)
 Education –
 Food Security – Geoffrey Ebong (WFP)
 Food Security (Production) – Joseph Egabu (FAO)
 Health Nutrition and HIV – Yoti Zabulon (WHO)
 Logistics – Anastazia Lubkovskaya (WFP)
 Protection – Eli Fryjordet (UNHCR)
 Human Rights/Rule of Law – Silvia Lavagnoli (UNOHCHR)
 Child Protection/GBV – Vera Chrobok (CCF)
 Shelter and NFIs – Massimo Altimari (UNICEF)
 Water Sanitation and Hygiene – Brett Maynard (UNICEF)

For more information, please contact:

Kristen Knutson, Public Information and Donor Liaison Officer, OCHA-Uganda: +256 312 244 888, +256 772 759 996 (mobile), knutson@un.org; Lydia Mirembe Ssenyonjo, National Information Officer, OCHA-Uganda: +256 312 244 890, mirembessenyonjo@un.org; Chris Hyslop, Desk Officer, OCHA-New York: +1 917 367 9457, hyslopc@un.org; Stephanie Bunker, Public Information Officer, OCHA-New York: +1 917 367 5126, +1 917 892 1679 (mobile), bunker@un.org; Elisabeth Byrs, Public Information Officer, OCHA-Geneva: +41 22 917 2653, byrs@un.org.

