

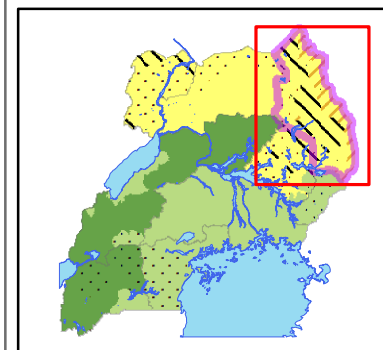
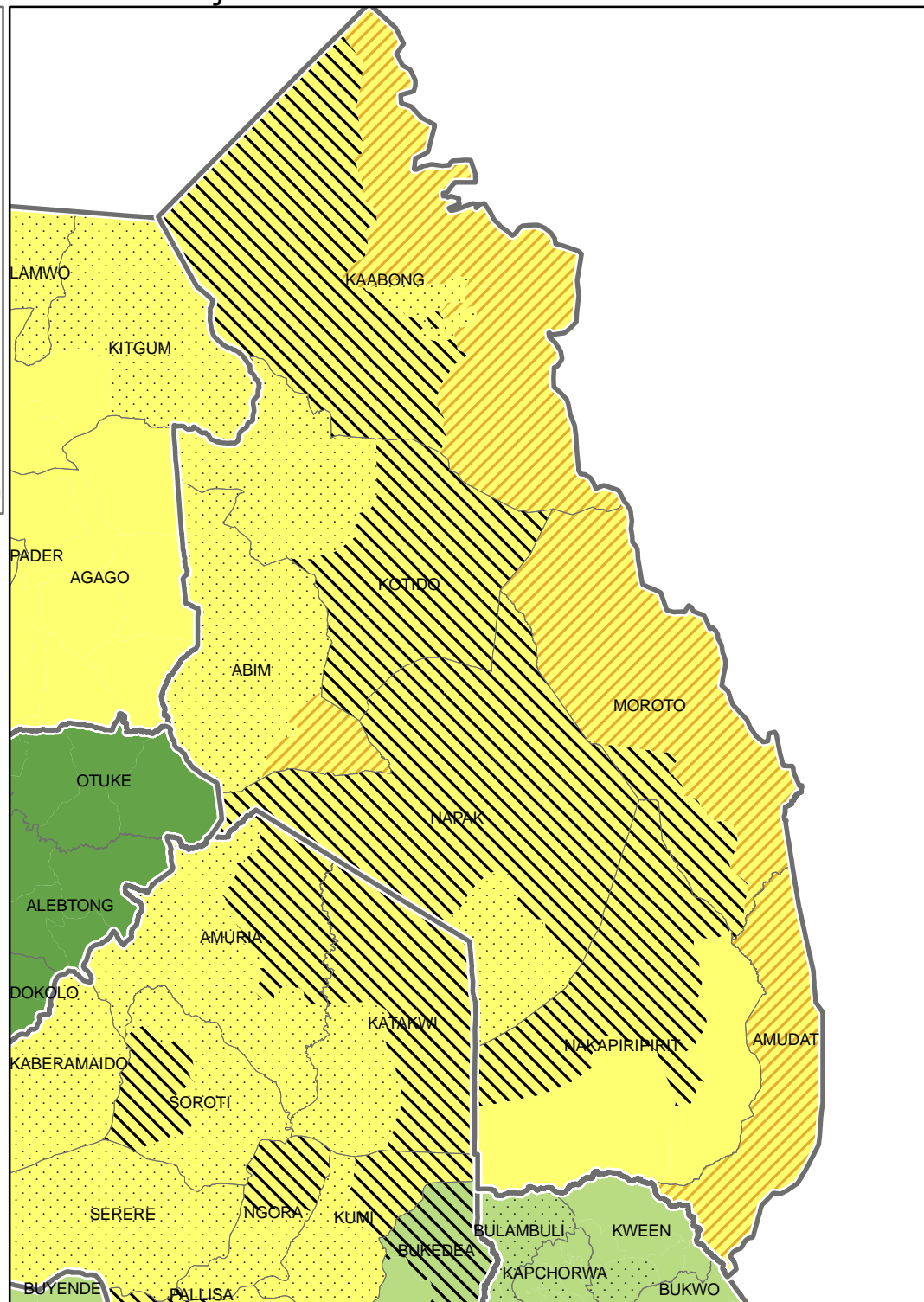
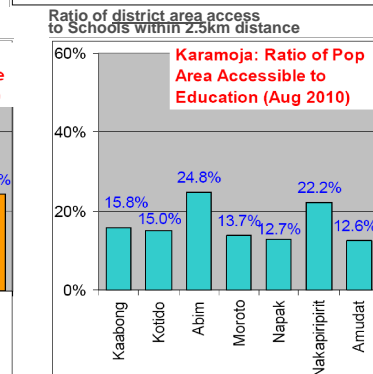
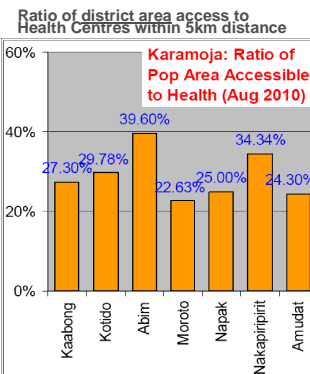
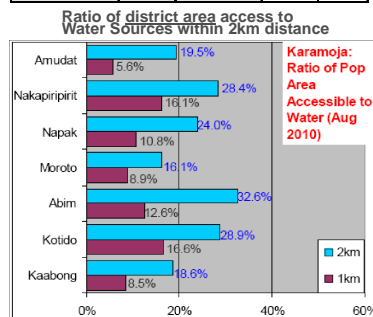
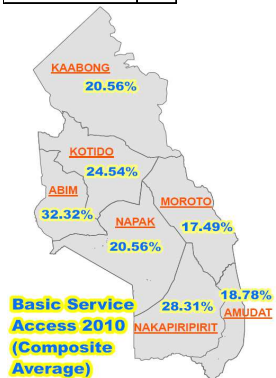
Karamoja Profile - November 2010

SUMMARY

- **CMR:** 0.7/10,000/day (National average: 0.25/10,000/day)
- **U5 MR:** 0.8/10,000/day
- **GAM:** 11.8%
- **SAM:** 1.8%
- **Stunting:**
 - General Stunting: 40.2%
 - Moderate Stunting: 22.8%
 - Severe Stunting: 17.4%
 - National average: 38%
- **Latrine Coverage:** 17%
- **Water Coverage:** 24% Accessing water within 2km
- **Health Center Coverage:** 28% Accessing a Health Center within 5km
- **Education facility Coverage:** 16.6% Accessing a School within 2.5km

District	2010
MOROTO	0.3
KAABONG	28
NAKAPIRIPIRIT	5
KOTIDO	4
ABIM	48

%	CMR	U5 Mortality	GAM	SAM
Abim	0.2	0.3	8.3	2.6
Kaabong	1.6	1.3	13	1.4
Kotido	0.6	1.4	10.8	1.5
Nakapiripirit	0.7	1	9	1
Moroto	0.2	0.1	14.7	3.5
Combined	0.7	0.8	11.8	1.8



Legend

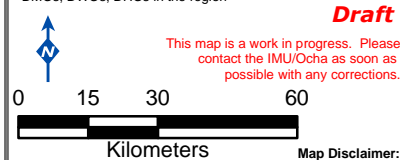
Current or Imminent Phase

- 1A Generally Food Secure
- 1B Generally Food Secure
- Moderate/ Borderline Food Insecure
- Acute Food and Livelihood Crisis
- Famine/ Humanitarian Catastrophe

Risk of Worsening Phase

- 2a High risk of magnitude worsening
- 2b Moderate risk of magnitude worsening
- 3a High risk of going to phase 3
- 3b Moderate risk of going to phase 3
- 4a High risk of going to phase 4
- 4b Moderate risk of going to phase 4
- a Watch

Data Sources:
 - Admin Boundaries - UBOS 2010
 - Integrated Nutrition and Food security Phase Classification (IPC)(Nov 2010)
 - Comprehensive Food Security & Vulnerability Analysis Report (WFP)
 - Karamoja ACF Nutrition survey report, May 2010
 - DMOs, DWOs, DHCs in the region



Map Disclaimer:
 The boundaries and names shown on this map do not imply official endorsement or acceptance by the United Nations.