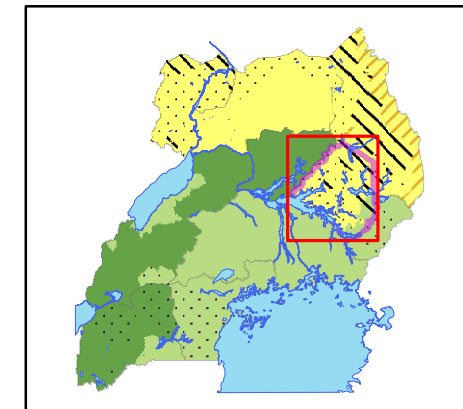
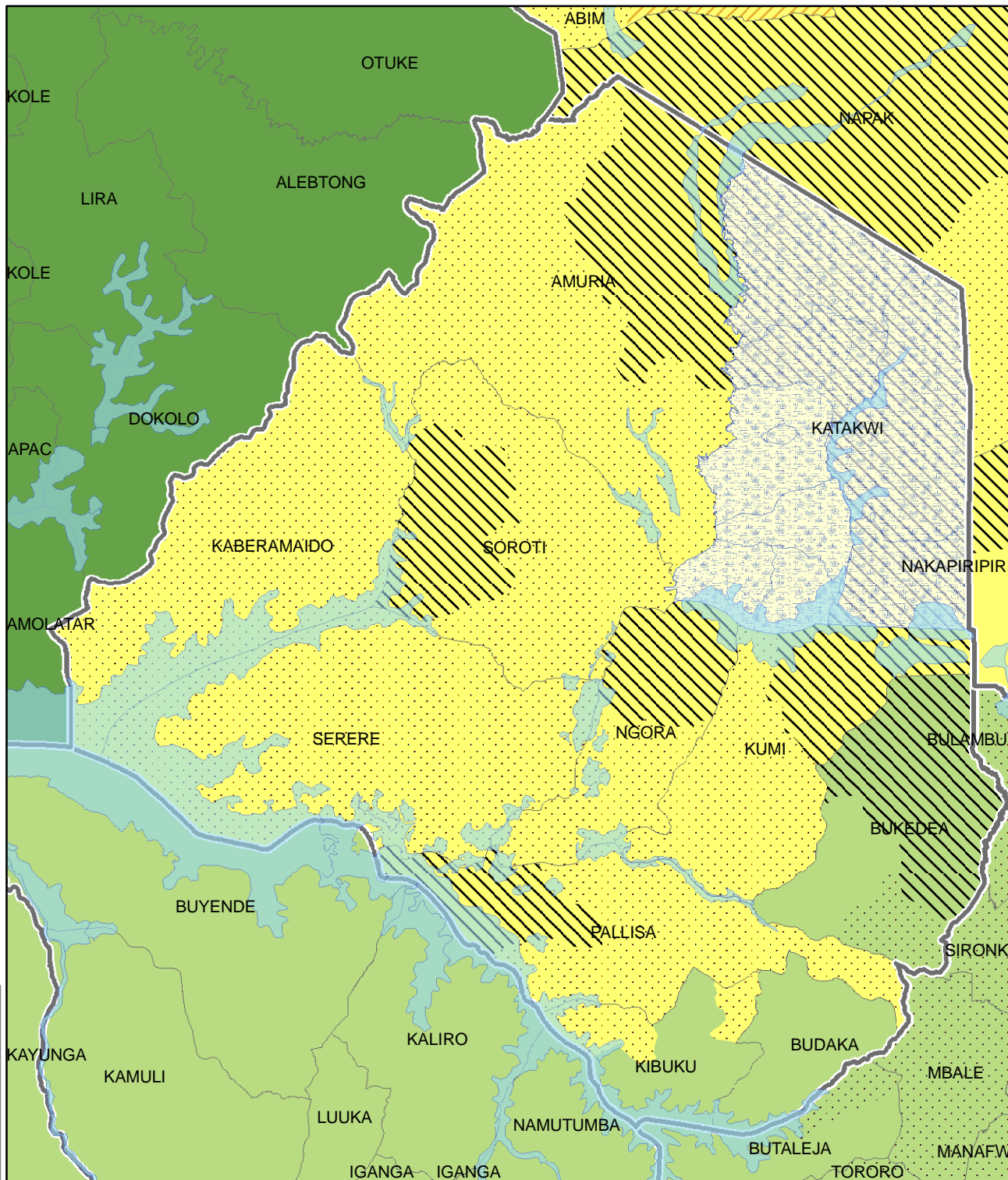
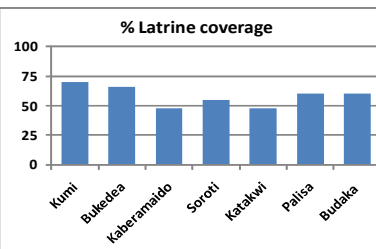
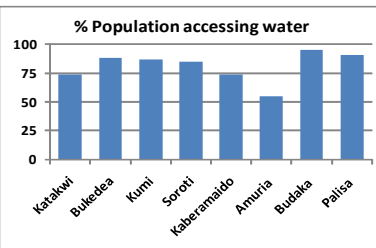
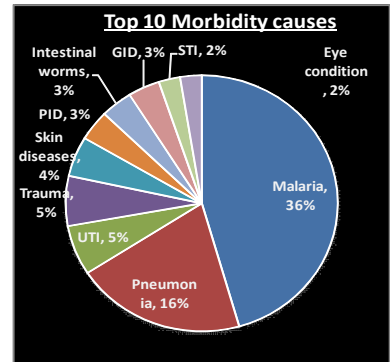
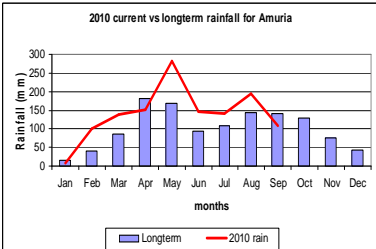


Teso Profile - November 2010

SUMMARY

- **Acute Malnutrition:** GAM:15.1%, SAM: 1.2%
 (National averages: GAM: 6%, SAM: 2%)
- **Latrine Coverage:** 58%
- **Primary school gross enrolment rate:** 117%-134%
- **Water access:** Reduction in Water access attributed to broken down boreholes
- **Civil Security:** - Threats of Karimojong raids continue in areas bordering Karamoja (Amuria and Katakwi)
- **Hazards:** - Cassava Brown Streak outbreak
 - Water logging in Katakwi, Amuria, Soroti and Kumi.



Legend

Risk of Worsening Phase

- 2a High risk of magnitude worsening
- 2b Moderate risk of magnitude worsening
- 3a High risk of going to phase 3
- 3b Moderate risk of going to phase 3
- 4a High risk of going to phase 4
- 4b Moderate risk of going to phase 4
- a Watch

Current or Imminent Phase

- 1A Generally Food Secure
- 1B Generally Food Secure
- Moderate/ Borderline Food Insecure
- Acute Food and Livelihood Crisis
- Famine/ Humanitarian Catastrophe
- lakes_rivers_05
- Flooded and Water logged areas-Sep 2010

Data Sources:
 - Admin Boundaries - UBOS 2010
 - Integrated Nutrition and Food security Phase Classification (IPC)(Nov 2010)
 - Comprehensive Food Security & Vulnerability Analysis Report (WFP)
 - Meteorology department - Jan - Aug 2010
 - DMOs, DWOs, DHOs in the region

Draft

This map is a work in progress. Please contact the IMU/Ocha as soon as possible with any corrections.

Map Disclaimer:

The boundaries and names shown and the designations used on this map do not imply official endorsement or acceptance by the United Nations.