

# West Nile Profile - November 2010

## SUMMARY

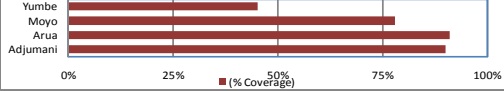
### Mortality rate

- **CMR:** 0.6(Adjumani)
- **U5 MR:** 11/10,000(Moyo), 203/10,000(Adjumani)
- **MMR:** 220/100,000(Yumbe), 600/100,000(Moyo)

### Water Access

- **Distance to Water points** 0.5 - 2km(Adjumani), 1 km(Arua), 0.5 - 1.5km(Moyo)
- **Water point functionality** 100%(Adjumani), 80%(Arua), 90%(Moyo), 81%(Maracha)

### Access to Health Services



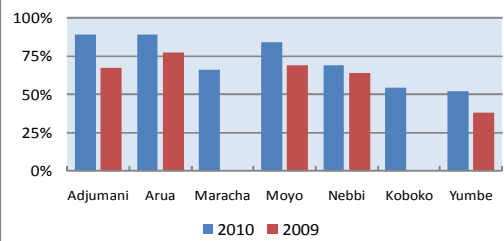
### Average distance to HC(km)



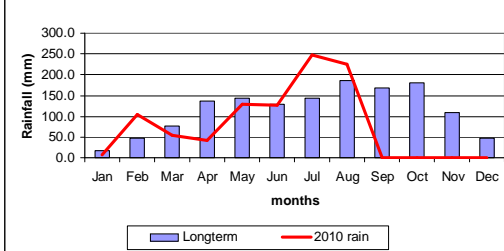
### Number of Health Centers



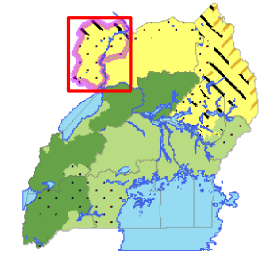
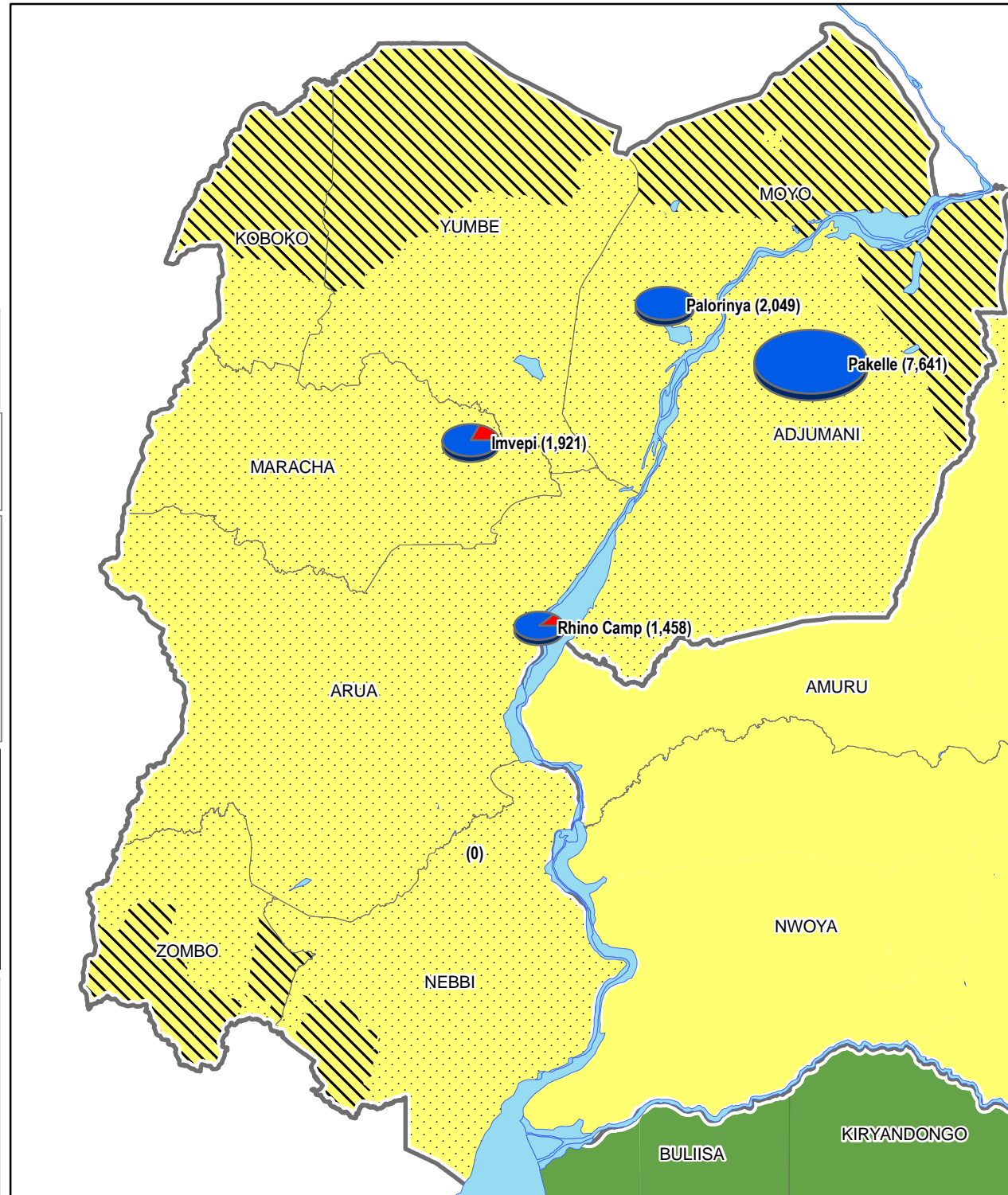
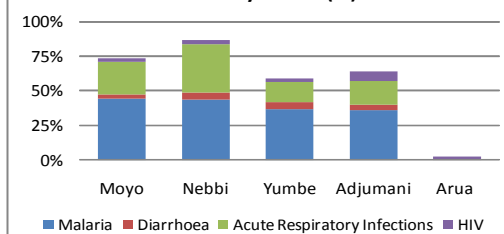
### %age of people accessing safe water



### 2010 rainfall vs longterm for Arua



### Morbidity causes (%)



## Legend

- Lakes/ Rivers
- Refugee Settlement**
- Size Varied according to population
- DRC
- SUDAN
- Burundi
- Current or Imminent Phase**
- 1A Generally Food Secure
- 1B Generally Food Secure
- Moderate/ Borderline Food Insecure
- Acute Food and Livelihood Crisis
- Famine/ Humanitarian Catastrophe
- Risk of Worsening Phase**
- 2a High risk of magnitude worsening
- 2b Moderate risk of magnitude worsening
- 3a High risk of going to phase 3
- 3b Moderate risk of going to phase 3
- 4a High risk of going to phase 4
- 4b Moderate risk of going to phase 4
- a Watch

Data Sources:  
 - Admin Boundaries - UBOS 2010  
 - Integrated Nutrition and Food security Phase Classification (IPC)(Nov 2010)  
 - Comprehensive Food Security & Vulnerability Analysis Report (WFP)  
 - DMOs, DWOs, DHOs in the region  
 - FEWSNET  
 - UNHCR (Refugee Populations as of Aug 2010)

**Draft**  
 This map is a work in progress. Please contact the IMU/Ocha as soon as possible with any corrections.

**Map Disclaimer:**  
 The boundaries and names shown and the designations used on this map do not imply official endorsement or acceptance by the United Nations.

Map Prepared: 20 October, 2010 (IMU/UNOCHA, Kampala)  
 File: UG-HUM-09\_A4\_10\_Oct10\_West Nile Profile map (AM)