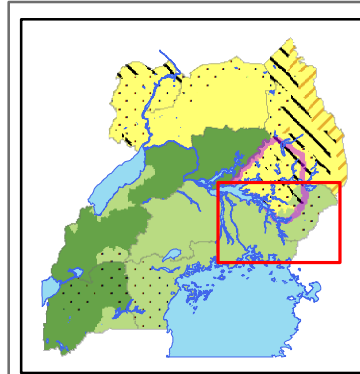


# Elgon and Eastern Uganda Profile - November 2010



### Legend

**Risk of Worsening Phase**

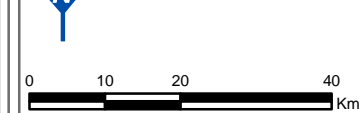
- 2a High risk of magnitude worsening
- 2b Moderate risk of magnitude worsening
- 3a High risk of going to phase 3
- 3b Moderate risk of going to phase 3
- 4a High risk of going to phase 4
- 4b Moderate risk of going to phase 4
- a Watch

**Current or Imminent Phase**

- 1A Generally Food Secure
- 1B Generally Food Secure
- Moderate/ Borderline Food Insecure
- Acute Food and Livelihood Crisis
- Famine/ Humanitarian Catastrophe
- Lakes/ Rivers

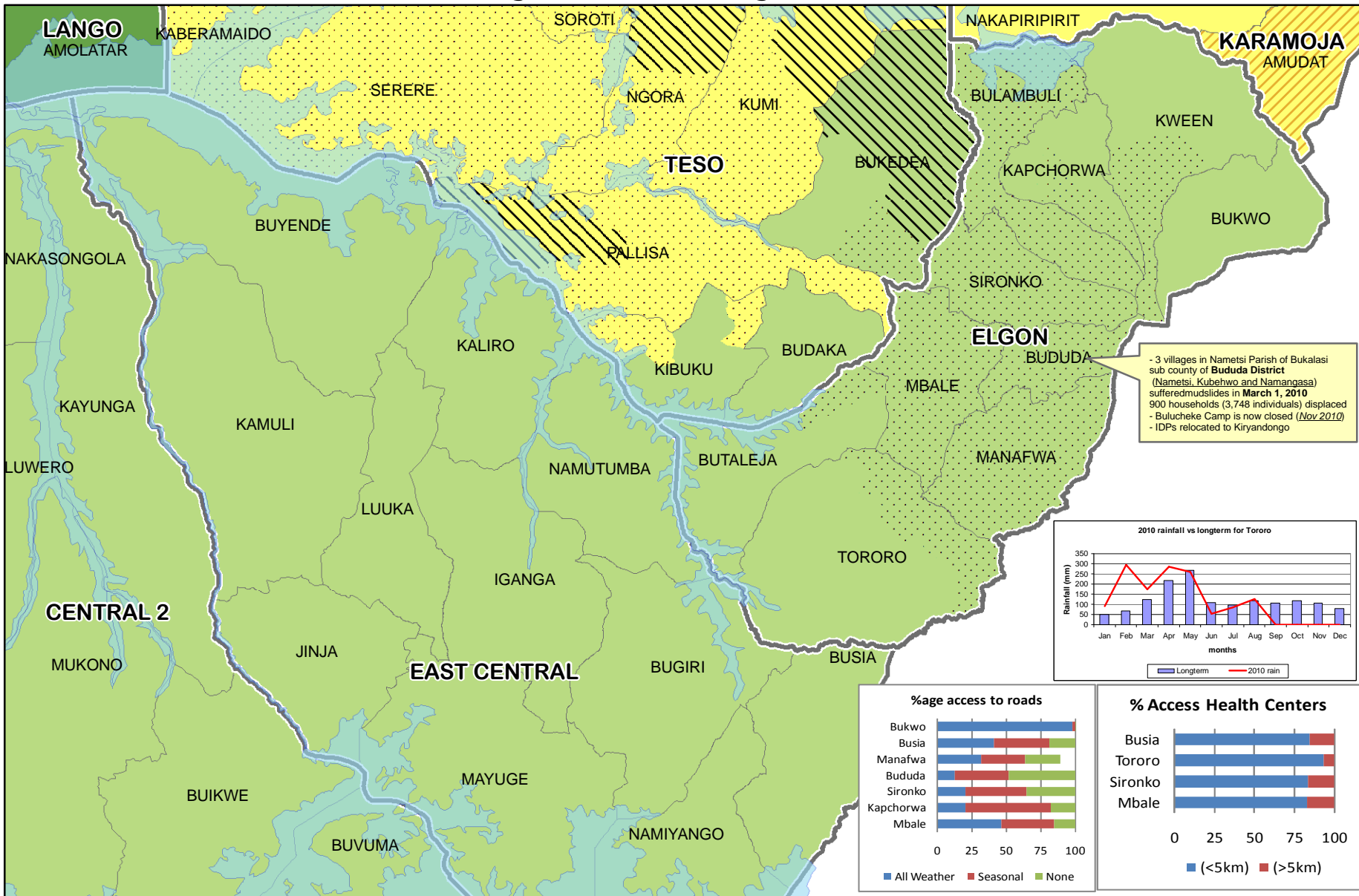
Data Sources:  
 - Admin Boundaries - UBOS 2010  
 - Integrated Nutrition and Food security Phase Classification (IPC)(Nov 2010)  
 - Comprehensive Food Security & Vulnerability Analysis Report (WFP)  
 - DMOS, DIWOs, DHOs in the region  
 - FEWSNET

**Draft**  
 This map is a work in progress. Please contact the IMU/Ocha as soon as possible with any corrections.

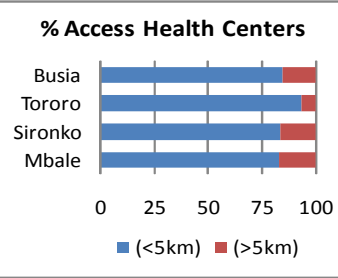
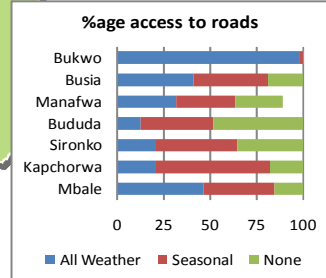
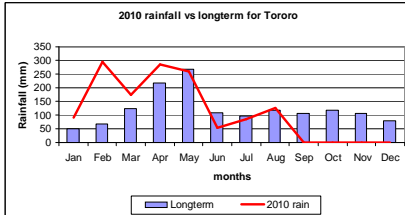


**Map Disclaimer:**  
 The boundaries and names shown and the designations used on this map do not imply official endorsement or acceptance by the United Nations.

Map Prepared: 20 October, 2010 (IMU/UNOCHA, Kampala)  
 File: UG-HUM-10\_A4\_10\_Oct10\_Elgon and Eastern Uganda Profile map (AM)



- 3 villages in Nametsi Parish of Bukalasi sub county of Bududa District (Nametsi, Kubehevo and Namangasa) suffered mudslides in March 1, 2010  
 - 900 households (3,748 individuals) displaced  
 - Bulucheke Camp is now closed (Nov 2010)  
 - IDPs relocated to Kiryandongo



**SUMMARY**

- **CMR:** 0.35/10,000/day (Elgon), 1/10,000/day (Mayuge) (National average: 0.25)
- **Stunting:** 41% (Tororo), 35% (Mbale), 23% (Iganga), National average: 38%
- **Latrine Coverage:** 77.8% (East Central), 63.9% (Elgon)
- Poor Road Network and Environmental Management leading to compromising Food Security in the Elgon region
- 90% of accessible water sources in Elgon are functional
- 63% Access safe water in Elgon and East and Central combined
- 86% of Households within 5km distance of a Health Center
- Above normal rains through all seasons facilitating food production

