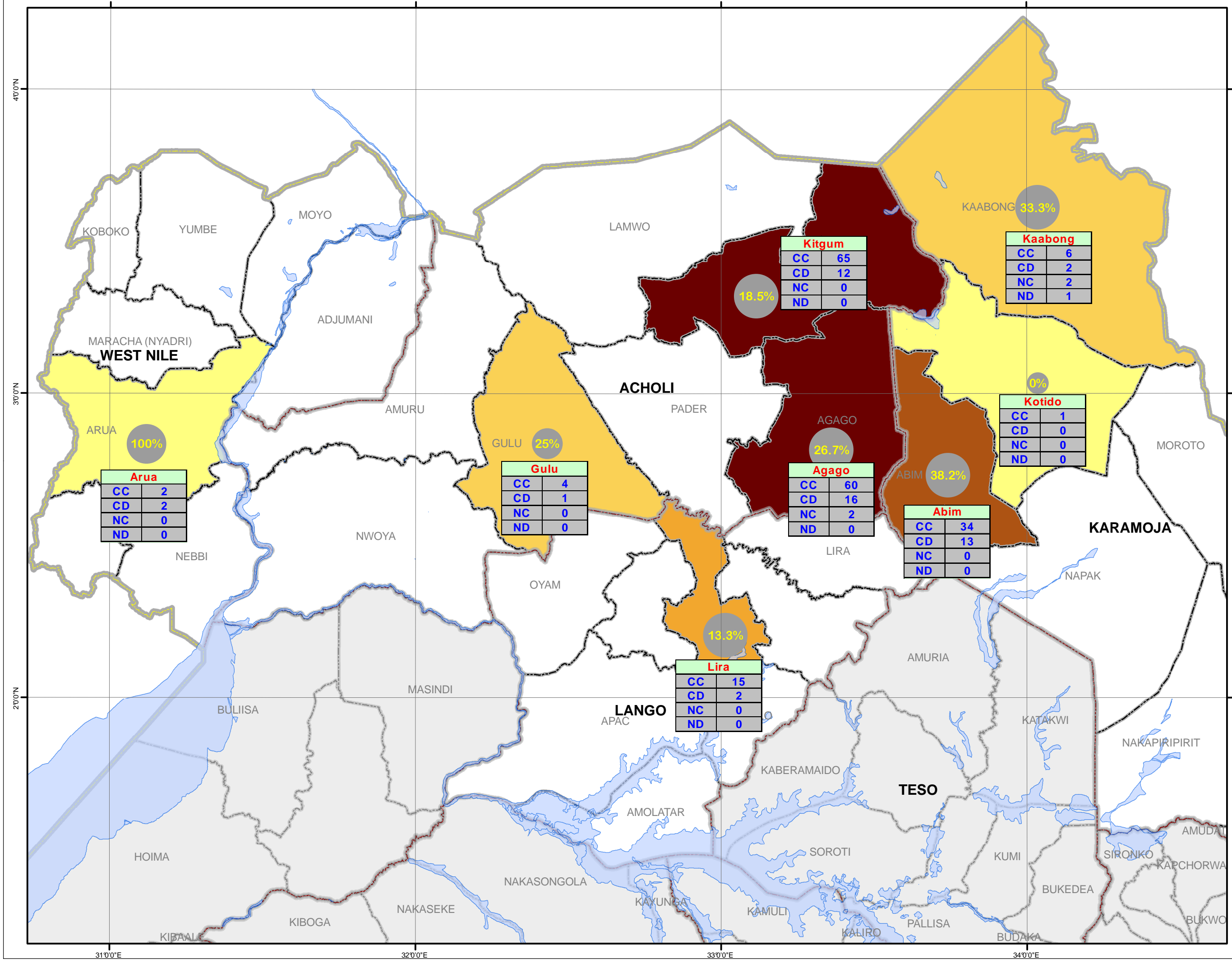


# NORTHERN UGANDA: Yellow Fever Cases and affected areas (as of 28th December 2010)



## Uganda Overview



## Legend

- National Boundary
- District Boundary

## Yellow Fever

### Cumulative cases 29Dec10

- <2
- 4 - 6
- 15
- 34
- 60 - 65

99% Case Fatality Rate(CFR)

## LEGEND

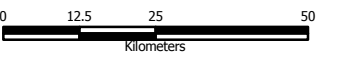
CC	Cumulative Cases
CD	Cumulative Deaths
NC	New Cases
ND	New Deaths

**NOTE:**  
 \* Previously referred to as undiagnosed until December 24th, there have been a cumulative total of 187 cases in 8 districts since the outbreak of Yellow Fever. With a high Case Fatality Rate (CFR) of 25.7%. It is considered to be of serious Public Health Impact.

**Support Needed:**

1. Mobilization of adequate resources for procurement and deployment of Yellow Fever vaccines
2. Mobilization of additional resources for the other outbreak response interventions including social mobilization and public information; case management and surveillance

**Data Sources:**  
 Admin Boundaries - UBOS 2010  
 Thematic - WHO/District Task Force, 28 December 2010



This map is a work in progress. Please contact the IMU/Ocha as soon as possible with any corrections.

**Draft**

**Map Disclaimer:**  
 The boundaries and names shown and the designations used on this map do not imply official endorsement or acceptance by the United Nations.

Map Prepared: 30 December, 2010 (IMU/UNOCHA, Kampala)  
 File: UG-Health-112\_30DecAug10\_Northern Uganda Yellow Fever Affected Areas & Cases as of 28 December 2010 (AM)