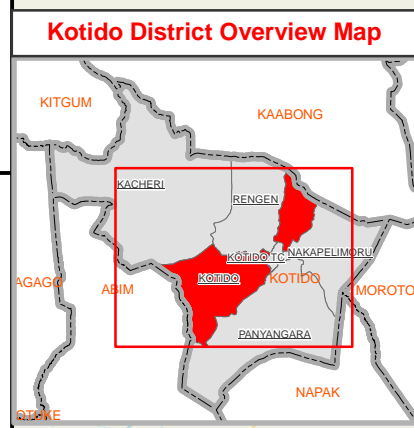
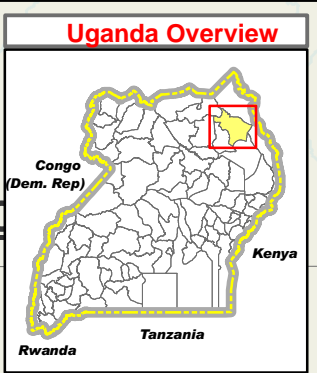
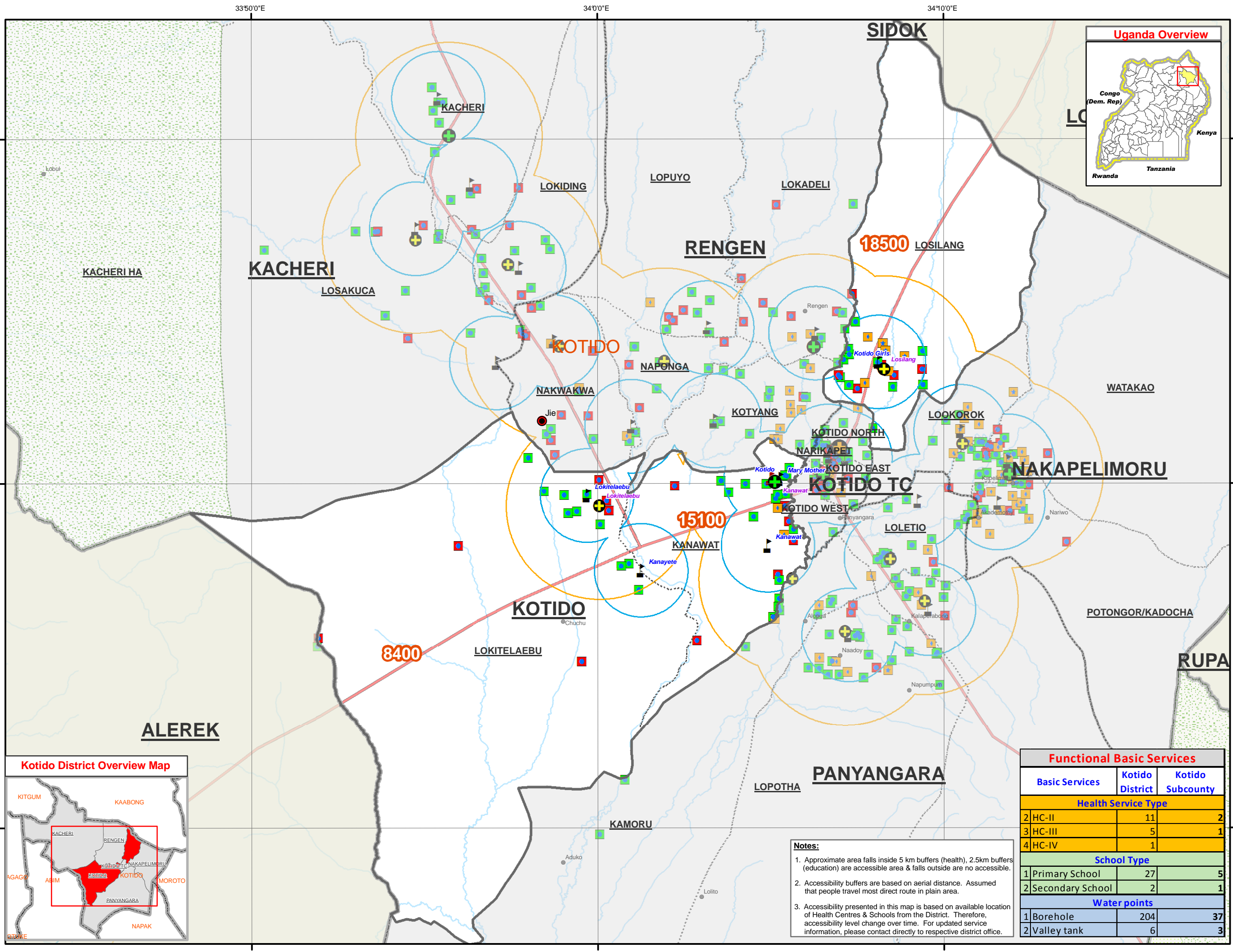


KOTIDO DISTRICT: KOTIDO SUB-COUNTY BASIC SERVICE ACCESSIBILITY (Nov 2010)



Legend

- District Admin Centres (Red circle)
- County Admin Centres (Orange circle)
- Major Centres (Black square)
- Towns (Red square)
- Motorable Road (Red line)
- Drainage (Blue line)
- National Boundary (Yellow dashed line)
- District Boundary (Black dashed line)
- Sub-County Boundary (Grey dashed line)
- Parish Boundary (Dotted line)

Landuse Type

- Forest Reserve (Green hatched)
- Game Reserve (Green dotted)
- National Park (Green solid)
- Rangeland (Light green solid)
- Water Body/Lakes (Blue solid)

Water Sources by Type

- Communal tank (Blue square)
- Deep borehole (Blue circle)
- Gfs/Tap (Blue star)
- Spring (Blue circle with cross)
- Shallow well (Blue circle with dot)
- Valley Tank/Dam (Blue star with cross)
- Water pond (Blue diamond)
- Unknown (Blue triangle)

Water Source Operational Status

- Functional (Green square)
- Temporarily down (Pink square)
- Non-functional (Red square)
- Seasonal (Yellow square)
- Unknown (Light blue square)
- Not Functional (Red X)

Health Centres by Type

- Clinics (White circle with cross)
- HC-II (Yellow circle with cross)
- HC-III (Green circle with cross)
- HC-IV (Black circle with cross)
- Hospital (Blue H)

Schools by Type

- Primary Schools (Black building icon)
- Secondary School (Red building icon)
- Others (Pink building icon)

999 Projected Population 2010 (by Parish)

- 2.5km School access buffer (~ 1 hrs walk to any School) (Blue circle)
- 5km Health access buffer (~ 1-1.5 hrs walk to any HC) (Orange circle)

Functional Basic Services		
Basic Services	Kotido District	Kotido Subcounty
Health Service Type		
2 HC-II	11	2
3 HC-III	5	1
4 HC-IV	1	
School Type		
1 Primary School	27	5
2 Secondary School	2	1
Water points		
1 Borehole	204	37
2 Valley tank	6	3

Notes:

- Approximate area falls inside 5 km buffers (health), 2.5km buffers (education) are accessible area & falls outside are no accessible.
- Accessibility buffers are based on aerial distance. Assumed that people travel most direct route in plain area.
- Accessibility presented in this map is based on available location of Health Centres & Schools from the District. Therefore, accessibility level change over time. For updated service information, please contact directly to respective district office.

Data Sources:
 Admin Boundaries - UBOS 2010
 Admin Centres - UBOS 2002/2006
 Landuse - UBOS 2006
 Road Network - FAO, OCHA
 Towns - Humanitarian Agencies in the field
 Major Centres - Humanitarian Agencies in the field
 IDP/Return Sites - Humanitarian Agencies in the field
 Settlements/Drainage - Humanitarian Partners/KDC/02
 Basic Services - Schools, DEO, Jul 2010
 Health, DHO, Jun 2010
 Water, DWO, Sep 2010
 (with supported by UNOCHA)
 Kenya layers - Regional Ocha Office, Kenya

This map is a work in progress. Please contact the IMU/Ocha as soon as possible with any corrections.

Map Disclaimer:
 The boundaries and names shown and the designations used on this map do not imply official endorsement or acceptance by the United Nations.

0 1.25 2.5 5 Kilometers

Map Prepare Date: 14 Dec 2010 (IMU/UNOCHA, Kampala)
 File: UG-Atlas-56_A3_14Dec10_Kotido District - Kotido Sub-County Basic Services (AM)