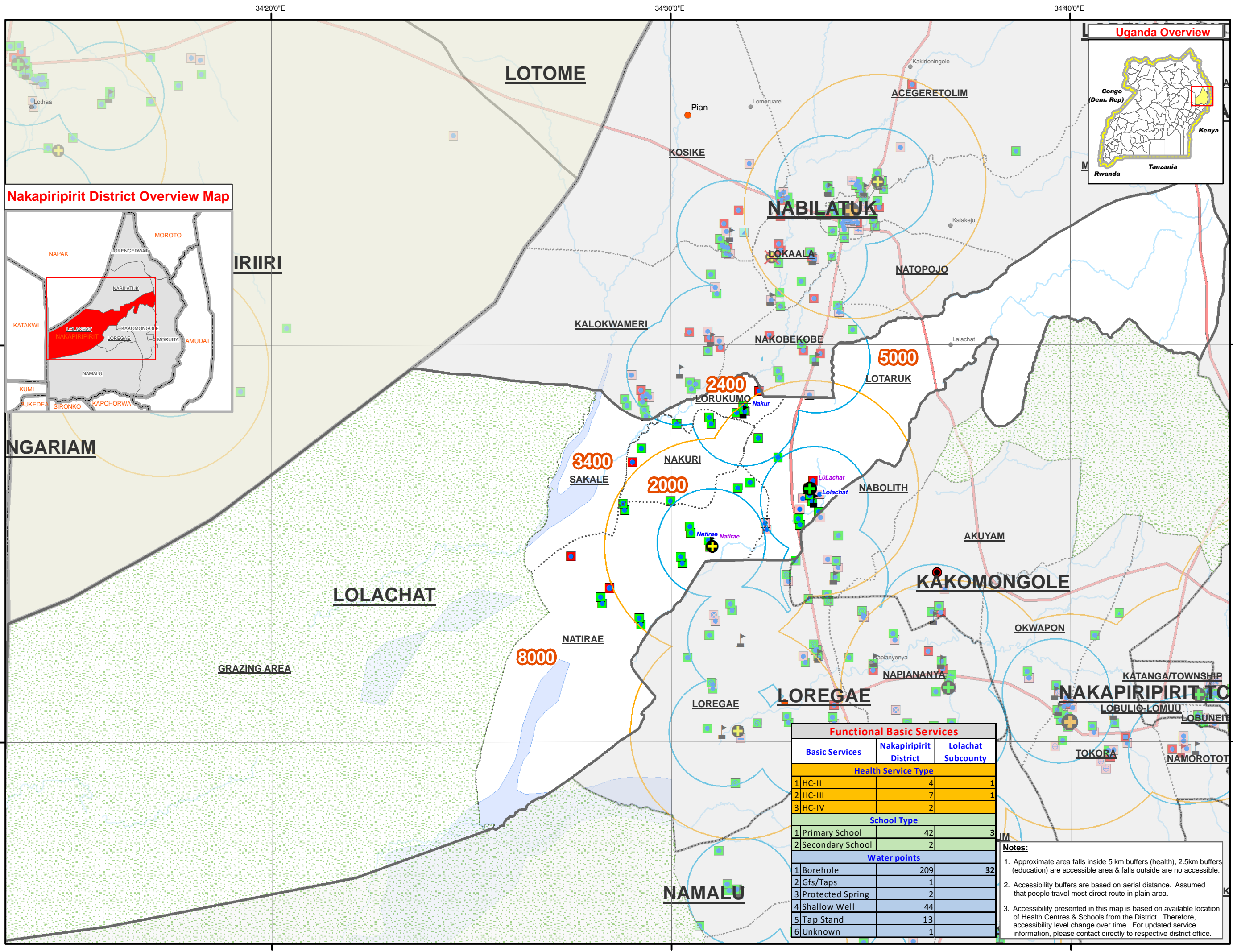
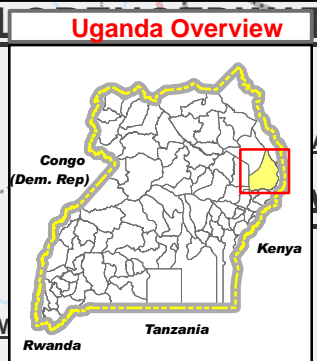
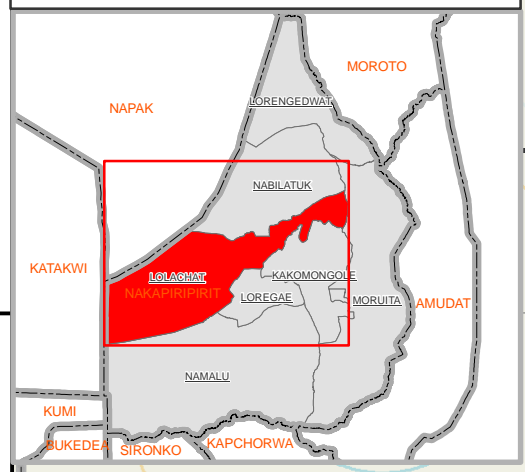


NAKAPIRIPIRIT DISTRICT: LOLACHAT SUB-COUNTY BASIC SERVICE ACCESSIBILITY (Nov 2010)



Nakapiripirit District Overview Map



Legend

- District Admin Centres
- County Admin Centres
- Major Centres
- Towns
- Motorable Road
- Drainage
- National Boundary
- District Boundary
- Sub-County Boundary
- Parish Boundary

Landuse Type

- Forest Reserve
- Game Reserve
- National Park
- Rangeland
- Water Body/Lakes

Water Sources by Type

- Communal tank
- Deep borehole
- Gfs/Tap
- Spring
- Shallow well
- Valley Tank/Dam
- Water pond
- Unknown

Water Source Operational Status

- Functional
- Temporarily down
- Non-functional
- Seasonal
- Unknown
- Not Functional

Health Centres by Type

- Clinics
- HC-II
- HC-III
- HC-IV
- Hospital

Schools by Type

- Primary Schools
- Secondary School
- Others

999 Projected Population 2010 (by Parish)

- 2.5km School access buffer (~ 1 hrs walk to any School)
- 5km Health access buffer (~ 1-1.5 hrs walk to any HC)

Functional Basic Services		
Basic Services	Nakapiripirit District	Lolachat Subcounty
Health Service Type		
1 HC-II	4	1
2 HC-III	7	1
3 HC-IV	2	
School Type		
1 Primary School	42	3
2 Secondary School	2	
Water points		
1 Borehole	209	32
2 Gfs/Taps	1	
3 Protected Spring	2	
4 Shallow Well	44	
5 Tap Stand	13	
6 Unknown	1	

Notes:

- Approximate area falls inside 5 km buffers (health), 2.5km buffers (education) are accessible area & falls outside are no accessible.
- Accessibility buffers are based on aerial distance. Assumed that people travel most direct route in plain area.
- Accessibility presented in this map is based on available location of Health Centres & Schools from the District. Therefore, accessibility level change over time. For updated service information, please contact directly to respective district office.

Data Sources:

- Admin Boundaries - UBOS 2010
- Admin Centres - UBOS 2002/2006
- Landuse - UBOS 2006
- Road Network - FAO, OCHA
- Towns - Humanitarian Agencies in the field
- Major Centres - Humanitarian Agencies in the field
- IDP/Return Sites - Humanitarian Agencies in the field
- Settlements/Drainage - Humanitarian Partners/KDC'02
- Basic Services - Schools, DEO, Jul 2010
- Health, DHO, Jun 2010
- Water, DWO, Sep 2010 (with supported by UNOCHA)
- Kenya layers - Regional Ocha Office, Kenya

This map is a work in progress. Please contact the IMU/Ocha as soon as possible with any corrections.

Map Disclaimer:
 The boundaries and names shown and the designations used on this map do not imply official endorsement or acceptance by the United Nations.

0 1 2 4 Kilometers

Map Prepare Date: 15 Dec 2010 (IMU/UNOCHA, Kampala)

File: UG-Atlas-76_A3_15Dec10_Nakapiripirit District - Lolachat Sub-County Basic Services (AM)