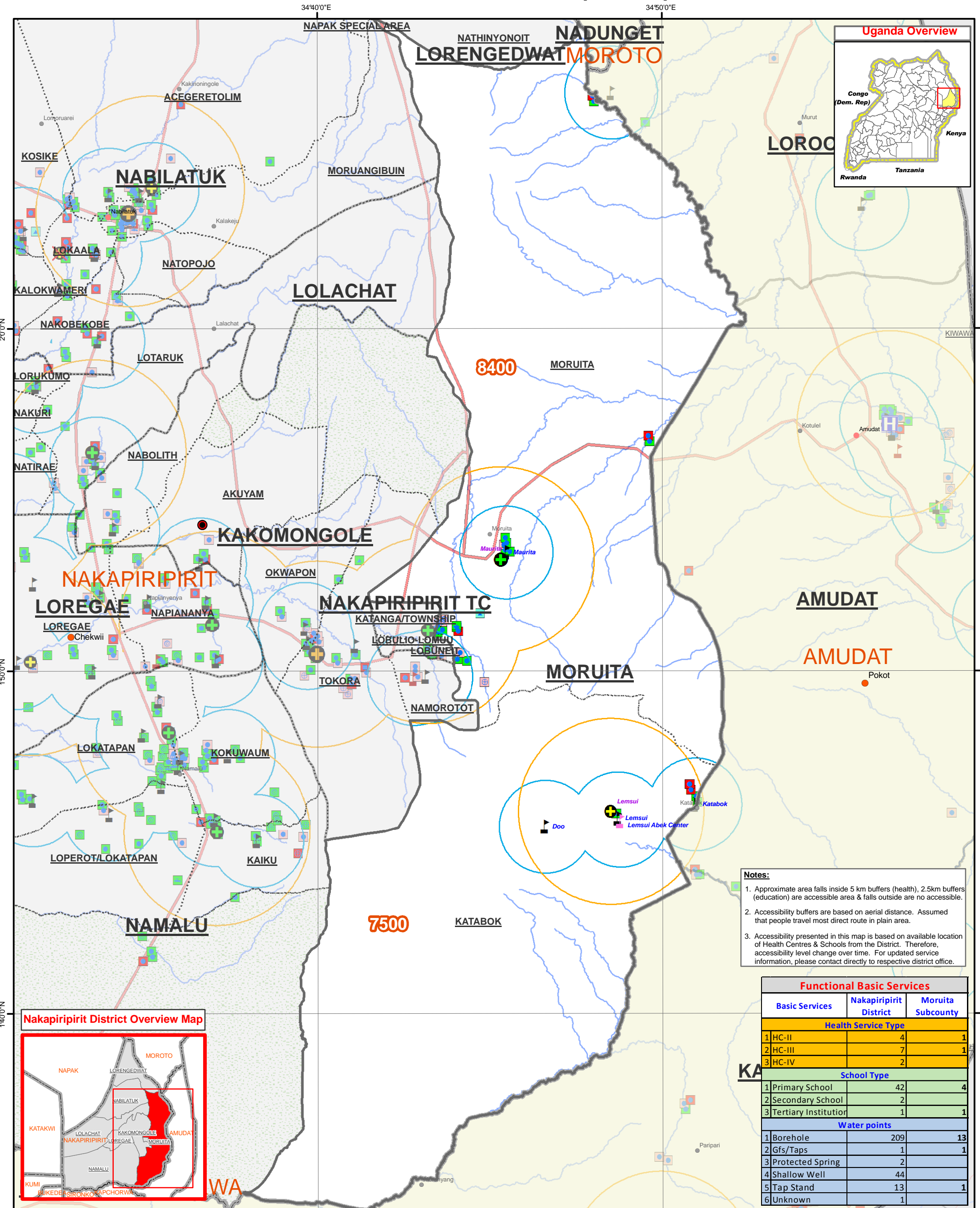


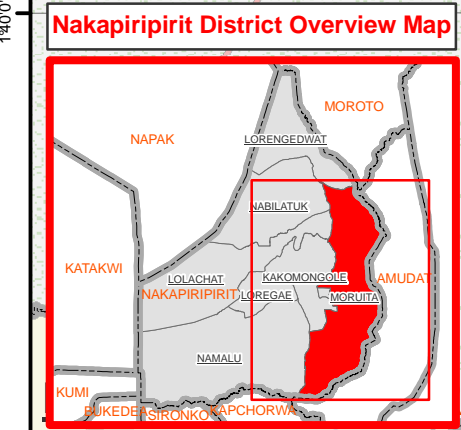
NAKAPIRIPRIT DISTRICT: MORUITA SUBCOUNTY BASIC SERVICE ACCESSIBILITY (Nov 2010)



Notes:

1. Approximate area falls inside 5 km buffers (health), 2.5km buffers (education) are accessible area & falls outside are no accessible.
2. Accessibility buffers are based on aerial distance. Assumed that people travel most direct route in plain area.
3. Accessibility presented in this map is based on available location of Health Centres & Schools from the District. Therefore, accessibility level change over time. For updated service information, please contact directly to respective district office.

Functional Basic Services		
Basic Services	Nakapiripirit District	Moruita Subcounty
Health Service Type		
1 HC-II	4	1
2 HC-III	7	1
3 HC-IV	2	
School Type		
1 Primary School	42	4
2 Secondary School	2	
3 Tertiary Institution	1	1
Water points		
1 Borehole	209	13
2 Gfs/Taps	1	1
3 Protected Spring	2	
4 Shallow Well	44	
5 Tap Stand	13	1
6 Unknown	1	



Legend

- District Admin Centres (Red circle)
- County Admin Centres (Orange circle)
- Major Centres (Black square)
- Towns (Red dot)
- Motorable Road (Red line)
- Drainage (Blue line)
- National Boundary (Yellow dashed line)
- District Boundary (Grey dashed line)
- Sub-County Boundary (Black dashed line)
- Parish Boundary (Black dotted line)
- Projected Population 2010 (by Parish) 999 (Orange circle)
- Landuse Type: Forest Reserve (Green hatched), Game Reserve (Green dotted), National Park (Green solid), Rangeland (Green dashed), Water Body/Lakes (Blue solid)
- Water Sources: Communal tank (Blue square), Deep borehole (Blue circle), Spring (Blue circle with cross), Valley Tank/Dam (Blue star), Water pond (Blue triangle), Unknown (Blue triangle)
- Water Source Status: Functional (Green square), Temporarily down (Red square), Non-functional (Red square), Seasonal (Orange square), Unknown (Green square), Drainage (Blue line)
- Health Centres: Clinics (Green cross), HC-II (Green circle with cross), HC-III (Green circle with cross), HC-IV (Green circle with cross), Hospital (Blue square with cross), Not Functional (Red X)
- Schools: Primary Schools (Black triangle), Secondary School (Black triangle), Others (Black triangle)

Data Sources:
 Admin Boundaries - UBOS 2010
 Admin Centres - UBOS 2002/2006
 Landuse - UBOS 2006
 Road Network - FAO, OCHA
 Towns - Humanitarian Agencies in the field
 Major Centres - Humanitarian Agencies in the field
 IDP/Return Sites - Humanitarian Agencies in the field
 Settlements/Drainage - Humanitarian Partners/KDC02
 Basic Services - Schools, DEO, Jun 2010
 Health, DHO, Jun 2010
 Water, DWO, Sep 2010
 (with supported by UNOCHA)
 Kenya layers - Regional Ocha Office, Kenya

Draft

This map is a work in progress. Please contact the IMU/Ocha as soon as possible with any corrections.

Map Disclaimers:
 The boundaries and names shown and the designations used on this map do not imply official endorsement or acceptance by the United Nations.

Map Prepare Date: 20 Dec 2010 (IMU/UNOCHA, Kampala)

File: UG-Atlas-79_A3_15Dec10_Nakapiripirit District - Moruita Subcounty Basic Services (AM)