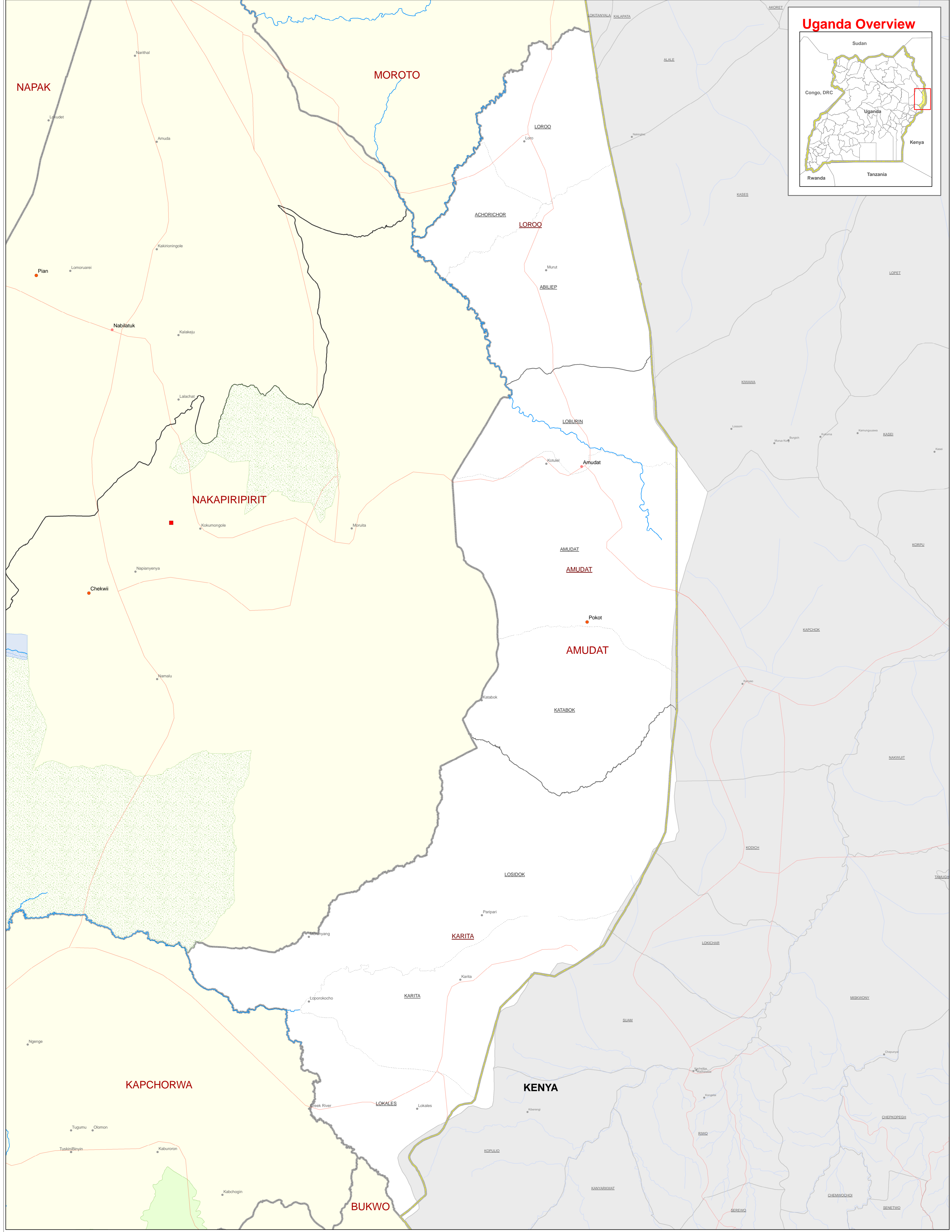
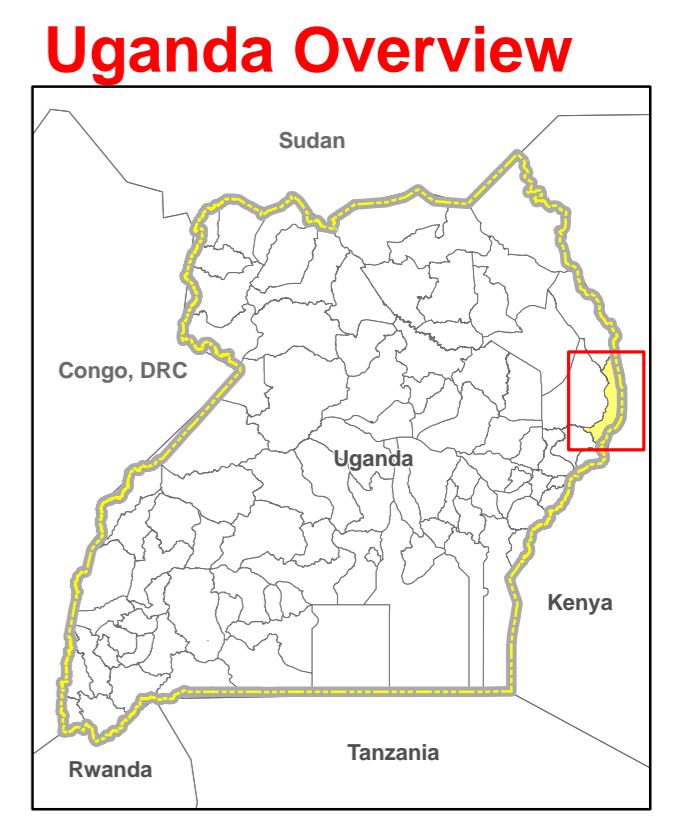


AMUDAT DISTRICT PLANNING MAP (Details)



- Legend**
- District Admin Centres
 - County Admin Centres
 - Major Centres
 - Towns
 - ▲ IDP Camp
 - IDP Returnee Site/Village
 - Motorable Road
 - Major rivers

- Landuse Type**
- National Park
 - Forest Reserve
 - Game Reserve
 - Rangeland
 - Water

- National Boundary
- District Boundary
- County Boundary
- LABEL Sub-County Boundary
- LABEL Parish Boundary

- Legend (Kenya Side)**
- Settlements
 - Rivers
 - Roads
 - Location Boundary

This map is a work in progress. Please contact the IMU/Ocha as soon as possible with any corrections.

Draft

Map Prepare Date: 16 September 2010 (IMU/UNOCHA, Kampala)
 File: UG-Plan-54_A1_16Sep10_Amudat District Planning Map (AM)

Data Sources:

- Admin Boundaries - UBOS 2010
- Admin Centres - UBOS 2002/2006
- Landuse - UBOS 2006
- Road Network - FAO, UNOCHA, District Partners
- Towns - Humanitarian Agencies in the field
- Major Centres - Humanitarian Agencies in the field
- Village - Humanitarian Agencies in the field
- Kenya layers - Regional Ocha Office, Kenya

Map Disclaimer:

The boundaries and names shown and the designations used on this map do not imply official endorsement or acceptance by the United Nations.