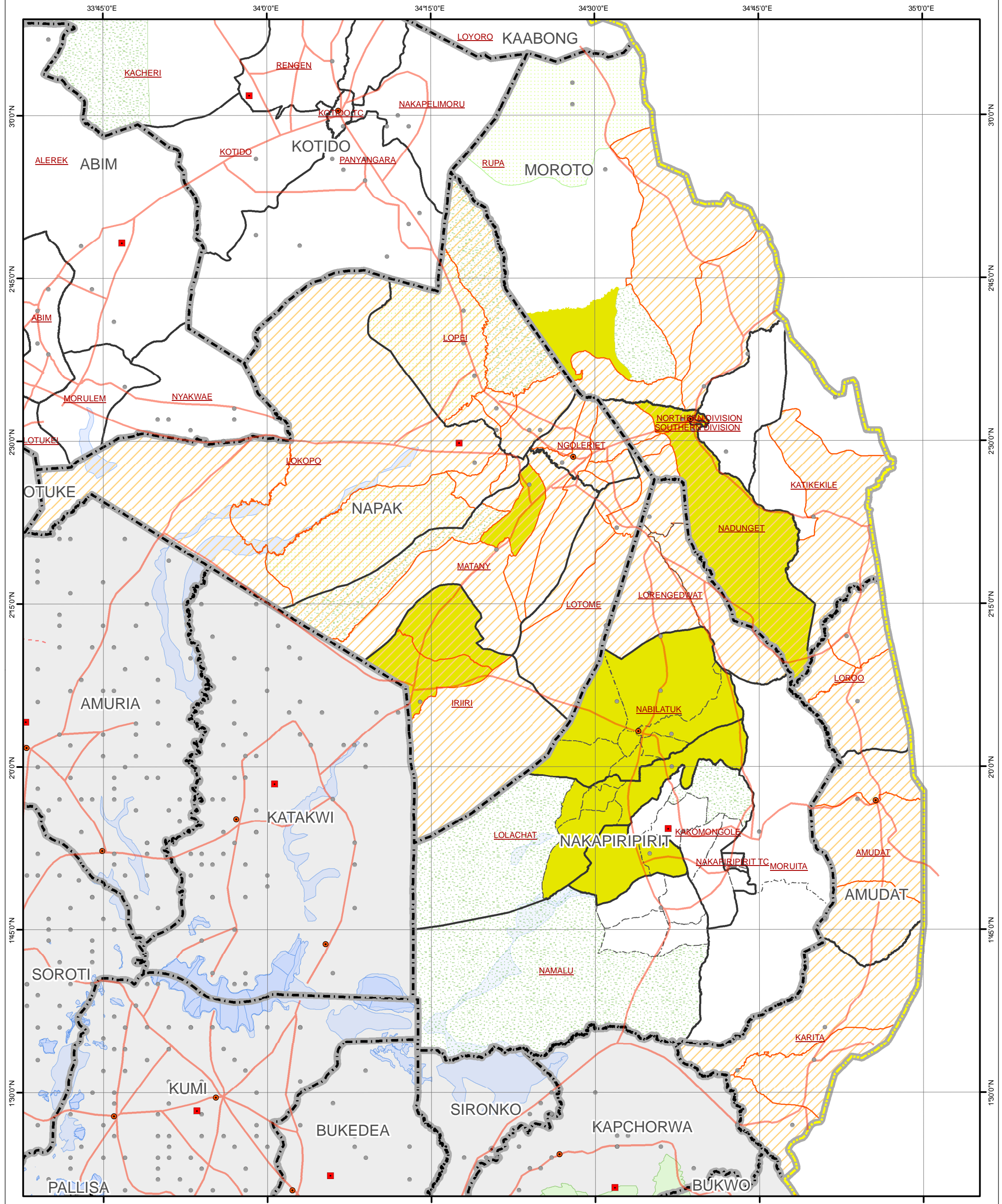


# SOUTH KARAMOJA: Areas Prone to Epidemics (August 2010)



### Legend

<b>Area prone to Epidemics</b>	■ District Center	▭ National Boundary	<b>Landuse Type</b>
▨ Cholera	● Town	▭ District Boundary	▨ Forest Reserve
■ Hepatitis E	● Village	▭ Sub-County Boundary	▨ Game Reserve
	— Motorable Roads	▭ Parish Boundary	▨ National Park
	- - - Tracks/Trails		▨ Rangeland
			▨ Lakes/Water Body

\* According to District Health OfficeS

Data Sources:  
 Admin Boundaries - UBOS 2010  
 Admin Centers - UBOS 2006  
 Town/Villages - Humanitarian Partners  
 Road Network - FAO, District, Ocha  
 Thematic - District Health OfficeS, August 2010

This map is a work in progress. Please contact the IMU/Ocha as soon as possible with any corrections.

**Draft**

Map Disclaimer:  
 The boundaries and names shown and the designations used on this map do not imply official endorsement or acceptance by the United Nations.

Map Prepare: 18 August, 2010 (IMU/UNOCHA, Kampala)  
 File: UG-Vul-60\_A3\_18Aug2010\_South Karamoja - Areas Prone to Epidemics, August 2010 (AM)