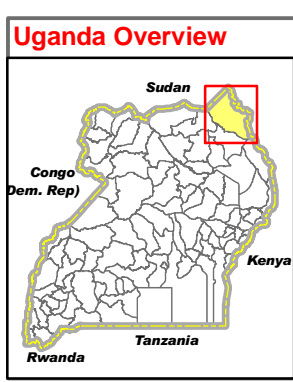
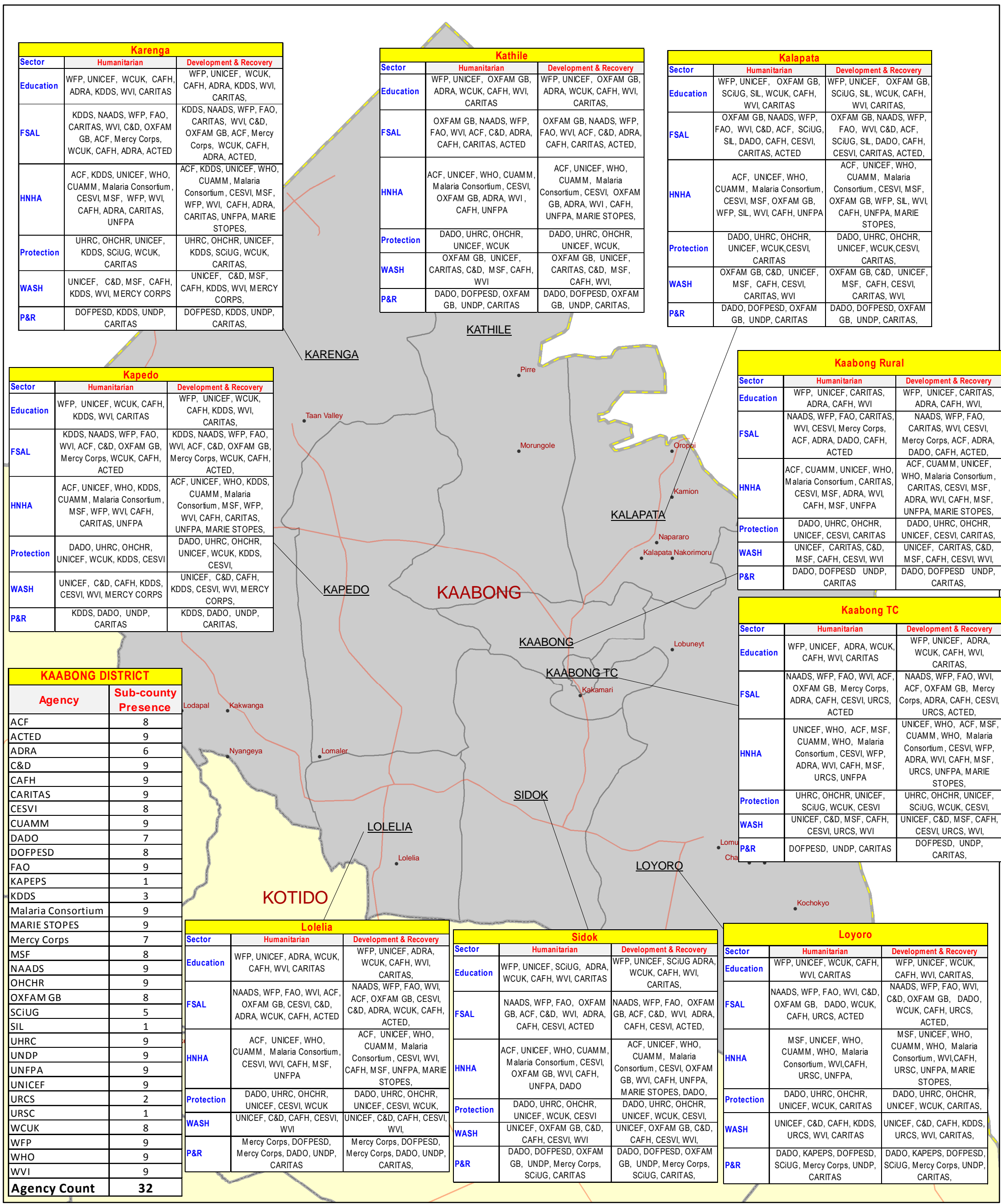


Kaabong District: Humanitarian, Recovery and Development Organizations Presence by Sector and Sub-County (October 2010)



Legend	
•	Villages
—	Motorable Road
	National Boundary
	District Boundary
	Sub-County Boundary

Sector Information	
Education	Education
FSAL	Food Security & Agricultural Livelihoods
HNHA	Health, Nutrition and HIV/AIDS
Protection	Protection Cluster (Human Rights, Rule of Law, Child, GBV, DCPC)
WASH	Water, Sanitation & Hygiene
P&R	Peace and Reconciliation

Data Sources:
 Admin Boundaries - UBOS 2006
 Kaabong Boundaries - UBOS 2006
 Road Network - FAO
 Village locations - Humanitarian Agencies in Kaabong District
 Thematic - Ocha, Kotido - October 2010

W3 information are updated by Ocha field office Kotido based on inputs received from organizations and in collaboration with local government of respective district.

Map Prepare Date: 27 Oct 10 (IMU Kampala/OCHA)
 File: UG-KABONG-W3-64_A3_27Oct10_Kaabong District Humanitarian, Recovery and Development Organizations Presence by Sector and Sub-County.mxd (AM)

Draft

This map is a work in progress. Please contact the IMU/Ocha as soon as possible with any corrections.

Map Disclaimer:
 The boundaries and names shown and the designations used on this map do not imply official endorsement or acceptance by the United Nations.