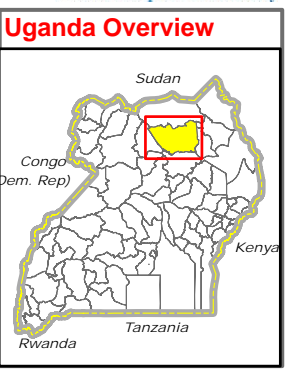
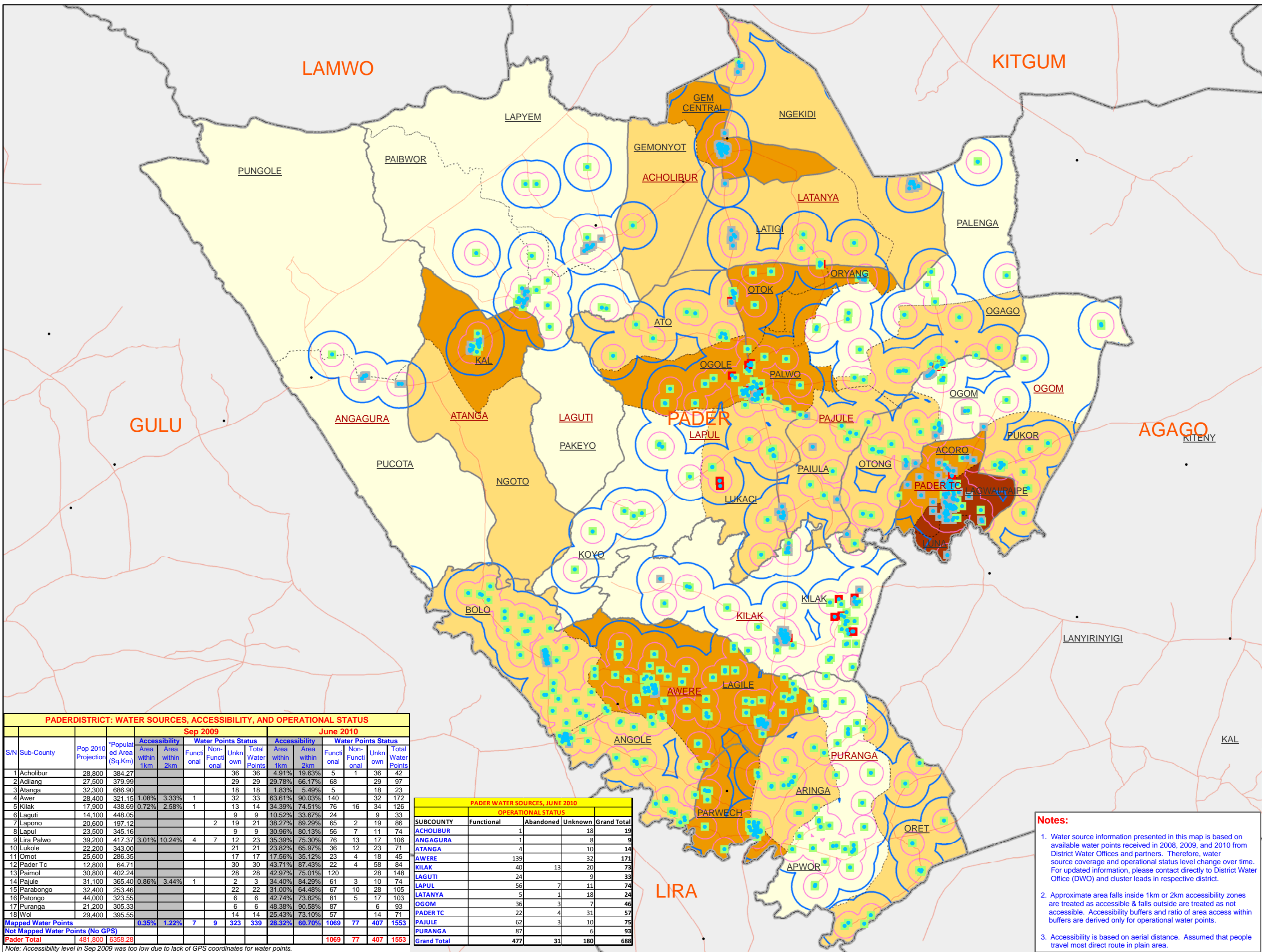


PADER DISTRICT: Water Sources by Operational Status & Accessibility (June 2010)



Legend

- Village
- Motorable Road
- National Boundary
- District Boundary
- Sub-County Boundary
- Parish Boundary

Pop Density per SqKm

(on 2010 Projected Pop)

- <= 50
- 50 - 100
- 100 - 200
- 200-1948.58

Landuse Type

- Forest Reserve
- Game Reserve
- National Park
- Rangeland

Water Source Type

- Boreholes (1553 Nos.)

Water Operational Status

- Functional (1069 Nos.)
- Non-Functional (77 Nos.)
- Unknown (407 Nos.)
- 2 km Water Access Buffers
- 1 km Water Access Buffers

Data Sources:
 Admin Boundaries - UBOS 2006
 Landuse/Demography - UBOS
 Road Network - FAO, District Partners, OCHA
 Villages - Humanitarian Agencies
 Thematic - District Water Office (DWO), May/June 2010

This map is a work in progress. Please contact the IMU/OCHA as soon as possible with any corrections.

Map Disclaimer:
 The boundaries and names shown and the designations used on this map do not imply official endorsement or acceptance by the United Nations.

Draft

Map Prepare: 01 Dec 10 (IMU/UNOCHA, Kampala)
 File: UG-WASH-65_A3_01Dec2010_Pader District Water Sources Operational Status, Population Density & Accessibility.mxd (AM)

PADERDISTRICT: WATER SOURCES, ACCESSIBILITY, AND OPERATIONAL STATUS															
S/N	Sub-County	Pop 2010 Projection	*Populat ed Area (Sq.Km)	Sep 2009				June 2010				Total Water Points			
				Area within 1km	Area within 2km	Functional	Non-Functional	Unkn own	Total Water Points	Area within 1km	Area within 2km		Functional	Non-Functional	Unkn own
1	Acholibir	28,800	384.27					36	36	4.91%	19.63%	5	1	36	42
2	Adilang	27,500	379.99					29	29	29.78%	66.17%	68		29	97
3	Atanga	32,300	686.90					18	18	1.83%	5.49%	5		18	23
4	Awer	28,400	321.15	1.08%	3.33%	1		32	33	63.61%	90.03%	140		32	172
5	Kilak	17,900	438.69	0.72%	2.58%	1		13	14	34.39%	74.51%	76	16	34	126
6	Laguti	14,100	448.05					9	9	10.52%	33.67%	24		9	33
7	Lapona	20,600	197.12					2	19	38.27%	89.29%	65	2	19	86
8	Lapul	23,500	345.16					9	9	30.96%	80.13%	56	7	11	74
9	Lira Palwo	39,200	417.37	3.01%	10.24%	4	7	12	23	35.39%	75.30%	76	13	17	106
10	Lukole	22,200	343.00					21	21	23.82%	65.97%	36	12	23	71
11	Omot	25,600	286.35					17	17	17.56%	35.12%	23	4	18	45
12	Pader Tc	12,800	64.71					30	30	43.71%	87.43%	22	4	58	84
13	Paimol	30,800	402.24					28	28	42.97%	75.01%	120		28	148
14	Pajule	31,100	365.40	0.86%	3.44%	1		2	3	34.40%	84.29%	61	3	10	74
15	Parabongo	32,400	253.46					22	22	31.00%	64.48%	67	10	28	105
16	Patongo	44,000	323.53					6	6	42.74%	73.82%	81	5	17	103
17	Puranga	21,200	305.33					6	6	48.38%	90.58%	87		6	93
18	Wol	29,400	395.55					14	14	25.43%	73.10%	57		14	71
Mapped Water Points				0.35%	1.22%	7	9	323	339	28.32%	60.70%	1069	77	407	1553
Not Mapped Water Points (No GPS)															
Pader Total				481,800	1638.28							1069	77	407	1553

PADER WATER SOURCES, JUNE 2010				
SUBCOUNTY	OPERATIONAL STATUS			
	Functional	Abandoned	Unknown	Grand Total
ACHOLIBUR	1		18	19
ANGAGURA	1		8	9
ATANGA	4		10	14
AWERE	139		32	171
KILAK	40	13	20	73
LAGUTI	24		9	33
LAPUL	56	7	11	74
LATANYA	5	1	18	24
OGOM	36	3	7	46
PADER TC	22	4	31	57
PAJULE	62	3	10	75
PURANGA	87		6	93
Grand Total	477	31	180	688

Notes:

- Water source information presented in this map is based on available water points received in 2008, 2009, and 2010 from District Water Offices and partners. Therefore, water source coverage and operational status level change over time. For updated information, please contact directly to District Water Office (DWO) and cluster leads in respective district.
- Approximate area falls inside 1km or 2km accessibility zones are treated as accessible & falls outside are treated as not accessible. Accessibility buffers and ratio of area access within buffers are derived only for operational water points.
- Accessibility is based on aerial distance. Assumed that people travel most direct route in plain area.