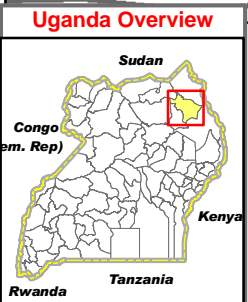
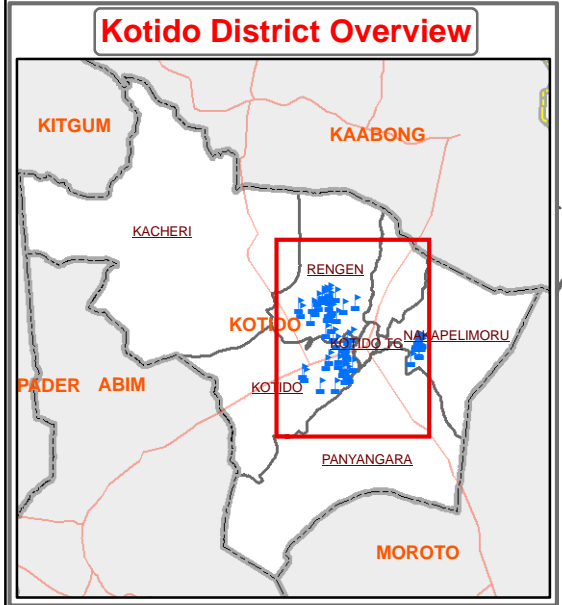
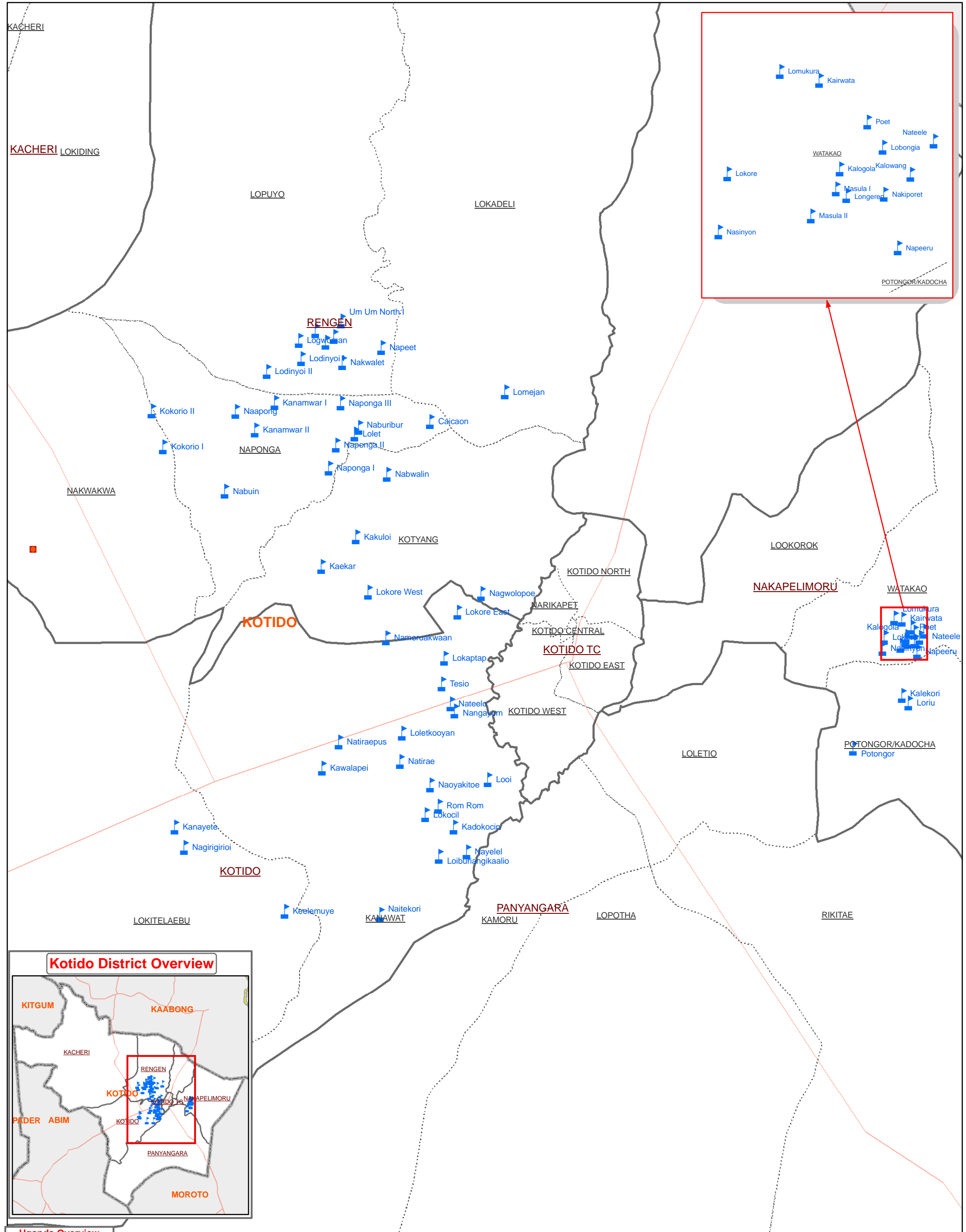


KOTIDO DISTRICT: Alternative Basic Education for Karamoja (ABEK) School Locations - July 2010



Legend

- ABEK Schools
- County Admin Centres
- District Admin Centres
- Motorable Road
- National Boundary
- District Boundary
- Sub-County Boundary
- Parish Boundary

Data Sources:
 Admin Boundaries - UBOS 2006
 Admin Centres - UBOS 2002/2006
 Landuse - UBOS 2006
 Road Network - FAO
 Thematic - UNOCHA, Kotido, July 2010

Map Preparation Date: 16 July 2010 (IMU/UNOCHA, Kampala)

File: UG-Education-25_A3_16Jul10_ABEK School Locations in Kotido

Map Disclaimer:
 This map is a work in progress. Please contact the IMU/Ocha as soon as possible with any corrections.

The boundaries and names shown and the designations used on this map do not imply official endorsement or acceptance by the United Nations.

Draft

0 12.5 25 50
 Kilometers