

ACHOLI SUB-REGION: Ratio of Population Covered by Health Facilities in Parish (Aug 2009)

National Standard (Health Facility)

Health Units:

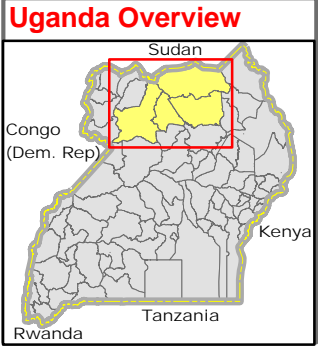
- 1 VHT per 25-30 households
- 1 HC-II per Parish
- 1 HC-III per Sub-County
- 1 HC-IV per County
- 1 Hospital per District

Source: Local government staffing Norms, HSSP2, 2005 - 2010, District Office.

Catchment Population:

- 1,000 people/VHT in village
- 5,000 people/HC-II in parish
- 20,000 people/HC-III in sub-county
- 100,000 people/HC-IV in county
- 500,000 people/Hospital in district

Source: WHO, Uganda



Legend

Functional HCs by Type

- ⊕ HC-II (91 Nos.)
- ⊕ HC-III (53 Nos.)
- ⊕ HC-IV (6 Nos.)
- H Hospital (8 Nos.)
- ✗ Non-functional (25 Nos.)

— Motorable Road
 — National Boundary
 — District Boundary
 — Sub-County Boundary
 — Parish Boundary

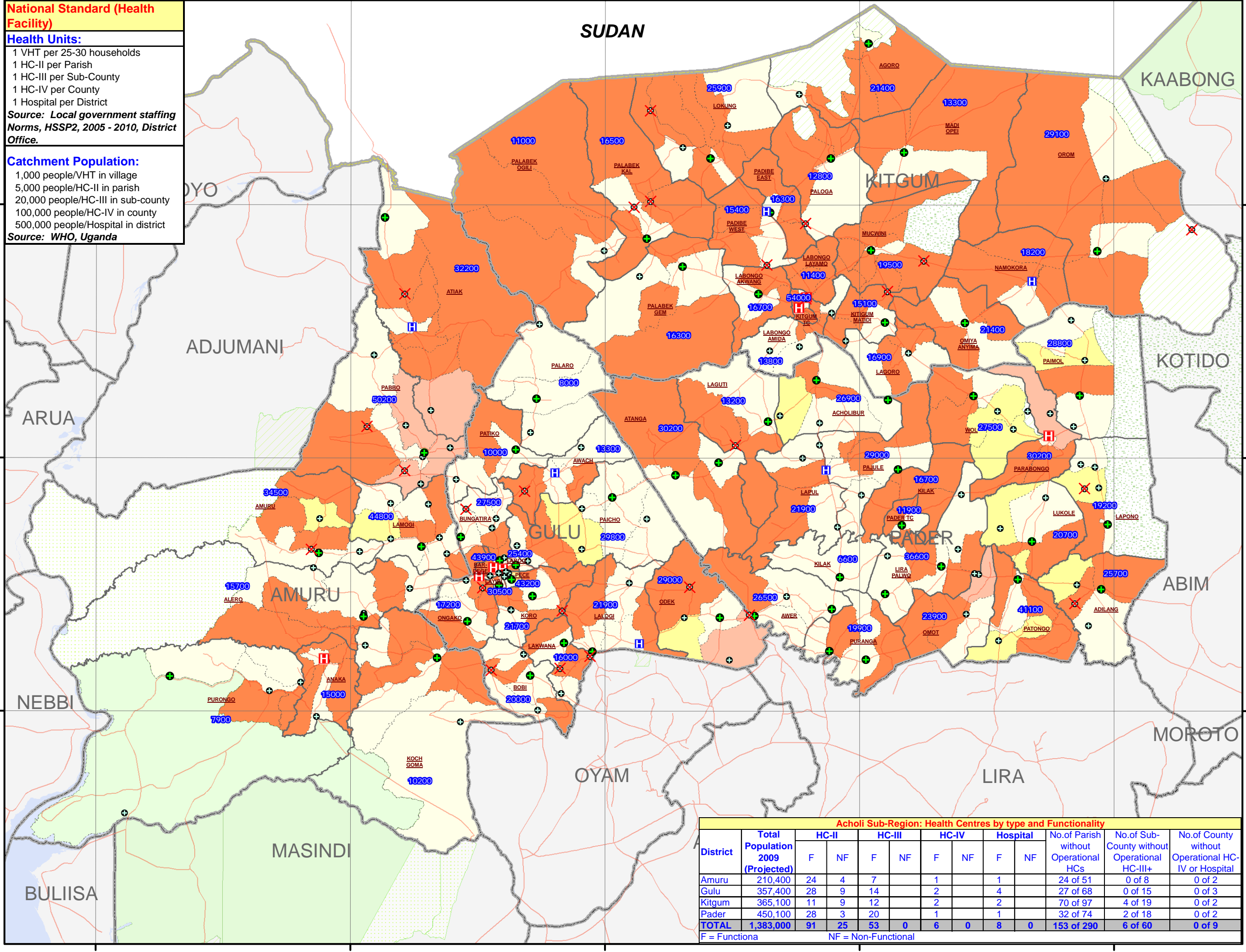
Landuse Type

- Forest Reserve
- Game Reserve
- National Park
- Rangeland
- Water Body/Lakes

Pop covered by Health Facility

- 90 - 100%
- 70 - 90%
- Upto 70%
- No Coverage

9999 Sub-County Projected Pop 2009



Notes:

- Ratio of population covered by operational Health Facilities within a parish is calculated by using national standards catchment population (1,000 people per VHT in village, 5,000 people per HC-II in parish, 20,000 people per HC-III in sub-county, 100,000 people per HC-IV in county, and 500,000 people per Hospital in the district).
- Many parishes have no health coverage (due to non-availability of operational health centres) within their own parish. However, they still can access facilities from nearby health centres in neighbouring parishes (which is not considered in this calculation).
- Health coverage information presented in this map is based on available data on locations of operational Health Centres from the District. It should be noted that population coverage ratios change over time. For updated health information, please contact the respective DHO & WHO directly.

Data Sources:

- Admin Boundaries - UBOS 2006
- Admin Centres - UBOS 2002/2006
- Landuse - UBOS 2006
- Road Network - FAO
- IDP/Return Sites/Village - Humanitarian Agencies in the field
- Health Centres - Amuru DHO, Feb '09
- Gulu DHO, Jan '09
- Kitgum DHO, June '09
- Pader DHO/WHO, Mar '09

This map is a work in progress. Please contact the IMU/OCHA as soon as possible with any corrections.

Map Disclaimer:

The boundaries and names shown and the designations used on this map do not imply official endorsement or acceptance by the United Nations.

Draft

Map Prepare: 31 Aug, 2009 (IMU/UNOCHA, Kampala)
 File: UG-Health-49_A3_31Aug09_Acholi Sub-Region Health Facility Coverage

Acholi Sub-Region: Health Centres by type and Functionality

District	Total Population 2009 (Projected)	HC-II		HC-III		HC-IV		Hospital		No. of Parish without Operational HCs	No. of Sub-County without Operational HC-III+	No. of County without Operational HC-IV or Hospital
		F	NF	F	NF	F	NF	F	NF			
Amuru	210,400	24	4	7		1		1		24 of 51	0 of 8	0 of 2
Gulu	357,400	28	9	14		2		4		27 of 68	0 of 15	0 of 3
Kitgum	365,100	11	9	12		2		2		70 of 97	4 of 19	0 of 2
Pader	450,100	28	3	20		1		1		32 of 74	2 of 18	0 of 2
TOTAL	1,383,000	91	25	53	0	6	0	8	0	153 of 290	6 of 60	0 of 9

F = Functiona NF = Non-Functional