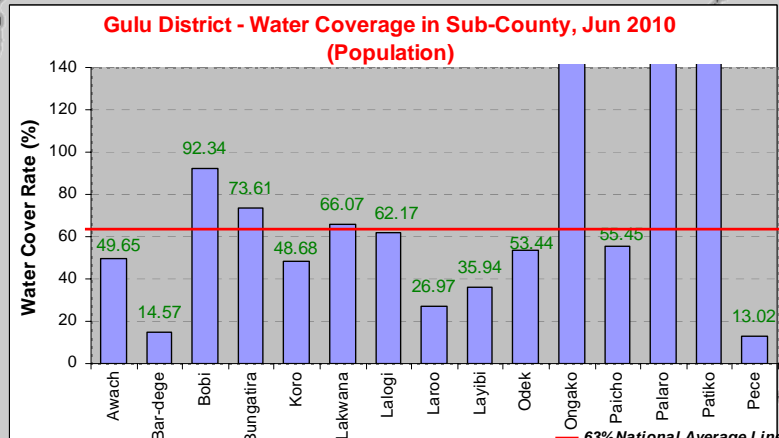
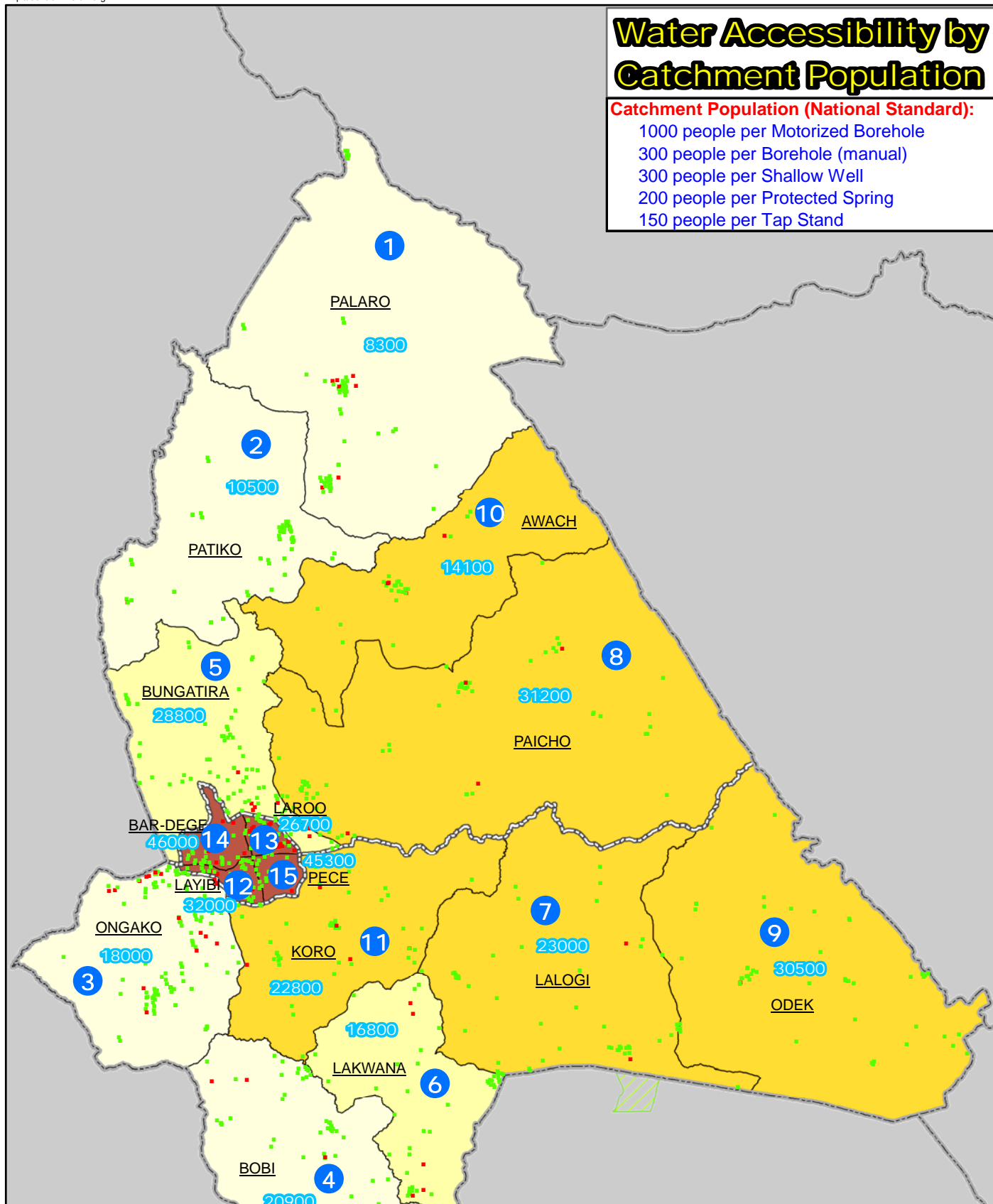


GULU DISTRICT: Water Accessibility Rank in Sub-County (June 2010)

Water Accessibility by Catchment Population

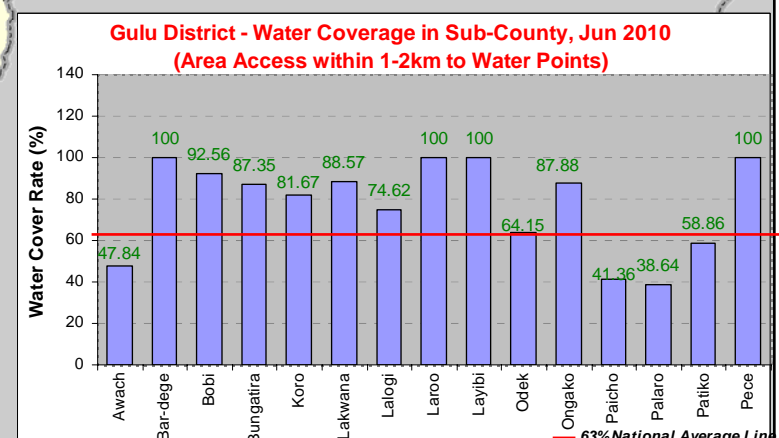
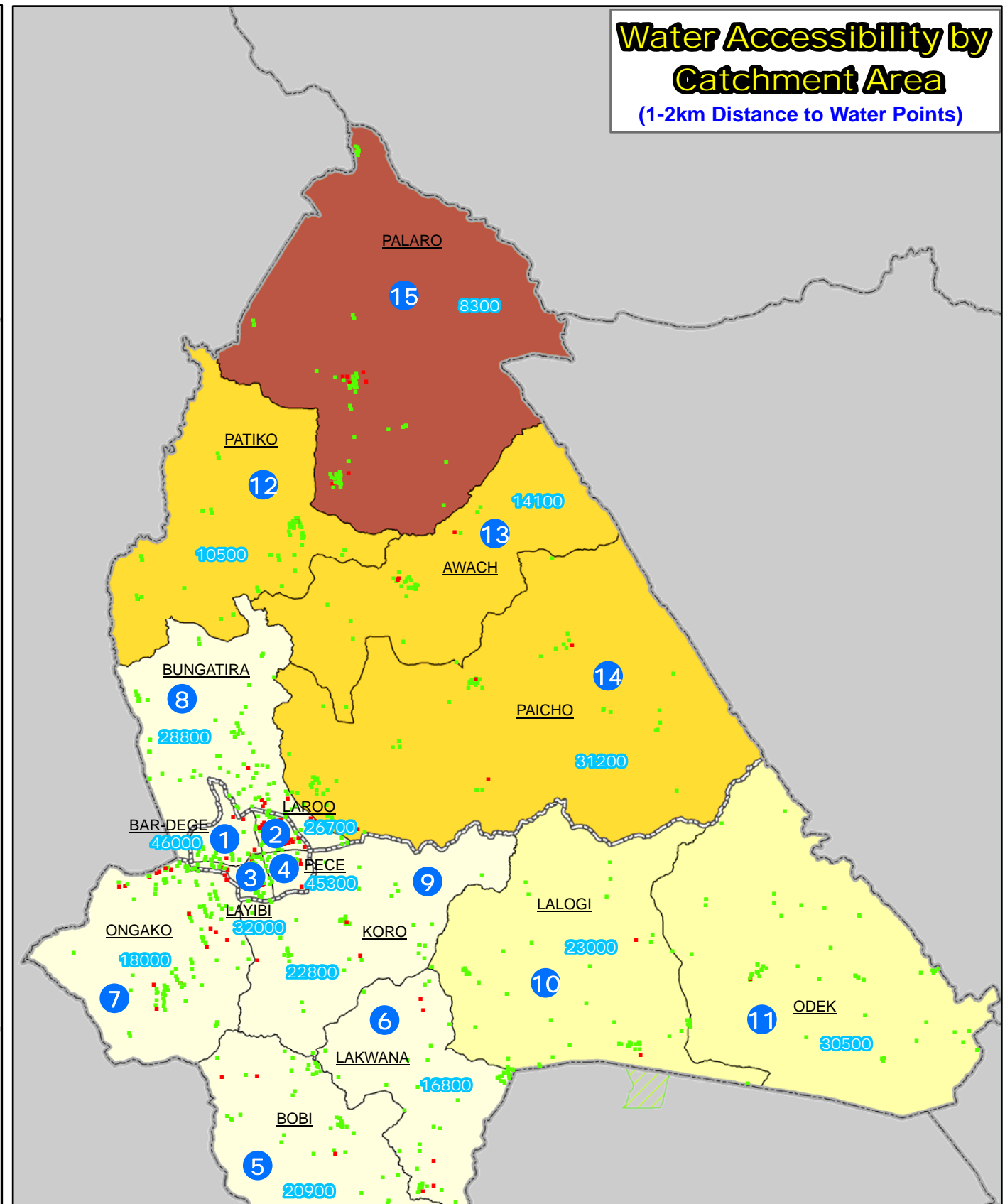
Catchment Population (National Standard):

- 1000 people per Motorized Borehole
- 300 people per Borehole (manual)
- 300 people per Shallow Well
- 200 people per Protected Spring
- 150 people per Tap Stand



Water Accessibility by Catchment Area

(1-2km Distance to Water Points)



Uganda Overview

Legend

- National Boundary
- District Boundary
- County Boundary
- Sub-County Boundary

Operational Status

- Functional
- Non-Functional

Ratio of Access to Water

- 80 - 100% Above Nat Avg (63%)
- 63 - 80%
- 40 - 63% Below Nat Avg (63%)
- <= 40%

999 Projected Pop 2010

Water Accessibility Index Rank

Notes:

- Ratio of Water accessibility (population and Area) within a sub-county is calculated by using Catchment population per water point and distance (1-2km radius). Access distance is based on aerial distance - assumed that people travel most direct route in plain area.
- Water points coverage information presented in this map is based on available locations of operational Water Points from the District. It should be noted that ratio of coverage change over time. For updated information, please contact the respective DWO & Cluster Leads directly.

Data Sources:

- Admin Boundaries - UBOS 2006
- Landuse - UBOS 2006
- Demography - UBOS
- Road Network - FAO, District, Ocha
- Water Points - DWO/MoWE-WATSUP Project, 2009/2010
- (Verified by DWO in May/June 2010)

This map is a work in progress. Please contact the IMU/Ocha as soon as possible with any corrections.

Map Disclaimer:

The boundaries and names shown and the designations used on this map do not imply official endorsement or acceptance by the United Nations.