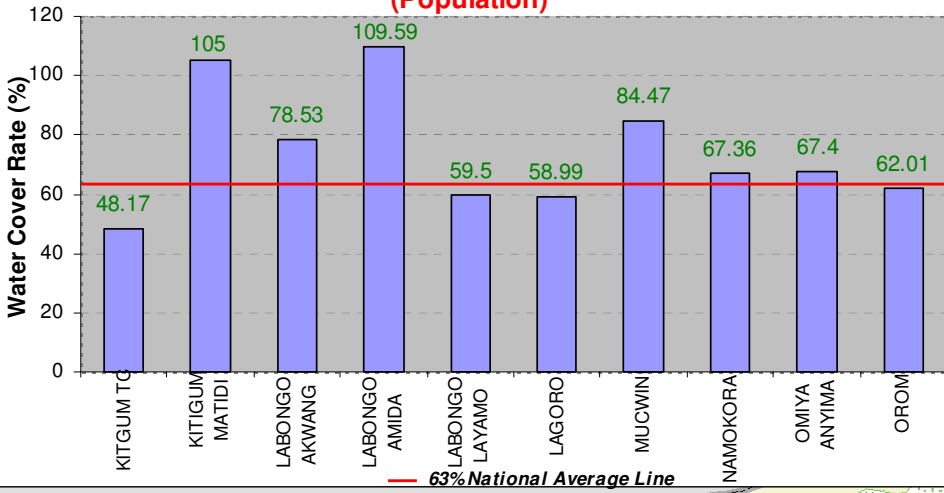
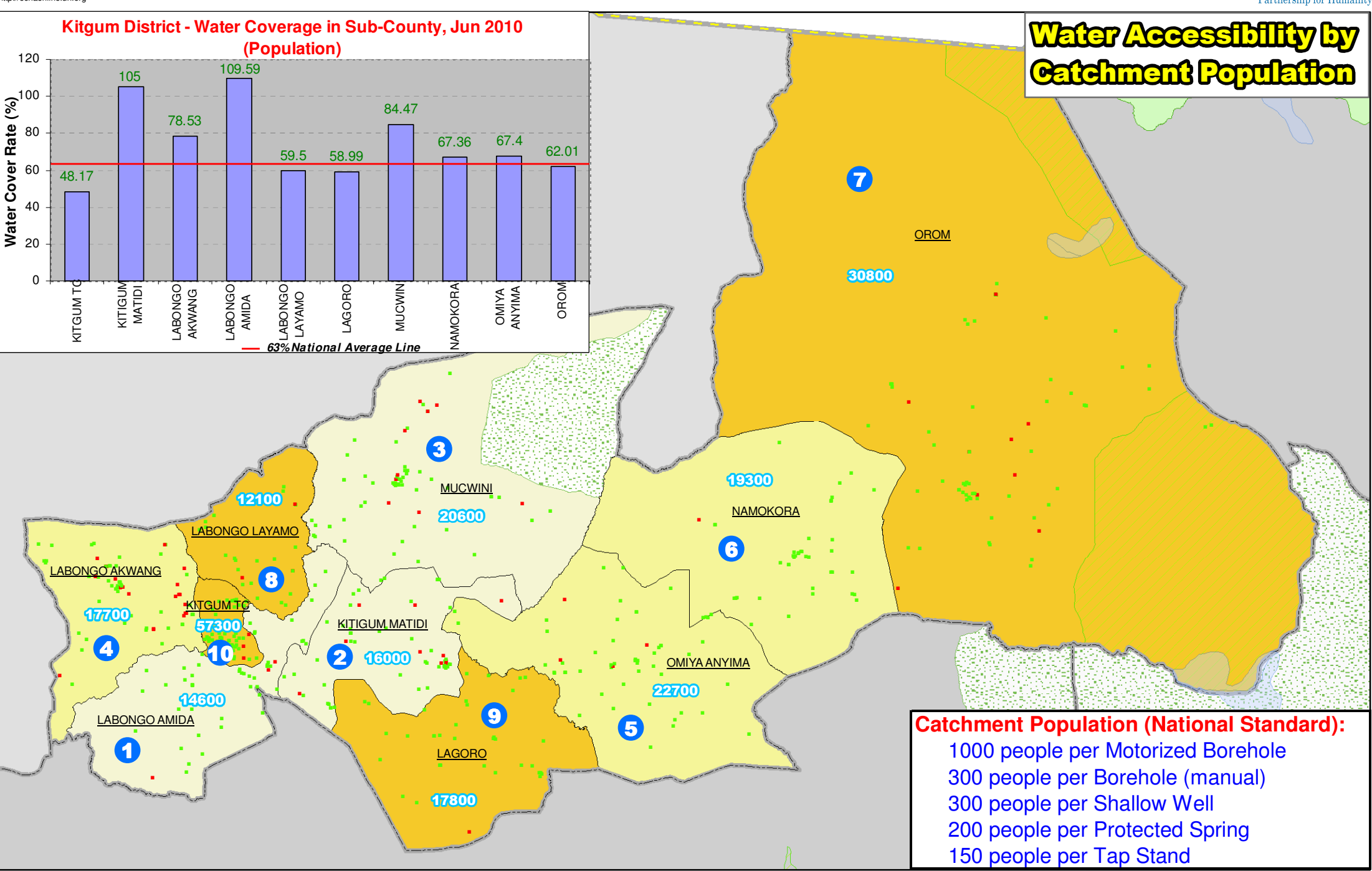


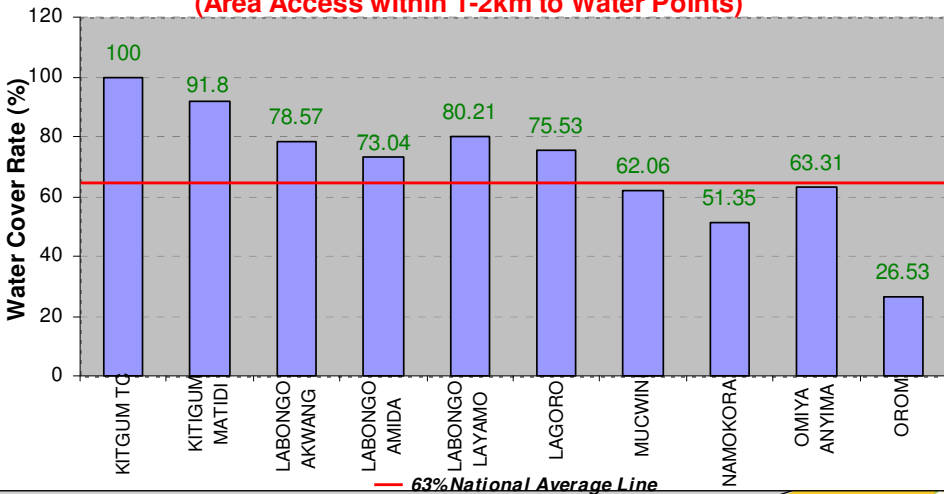
Kitgum District - Water Coverage in Sub-County, Jun 2010 (Population)



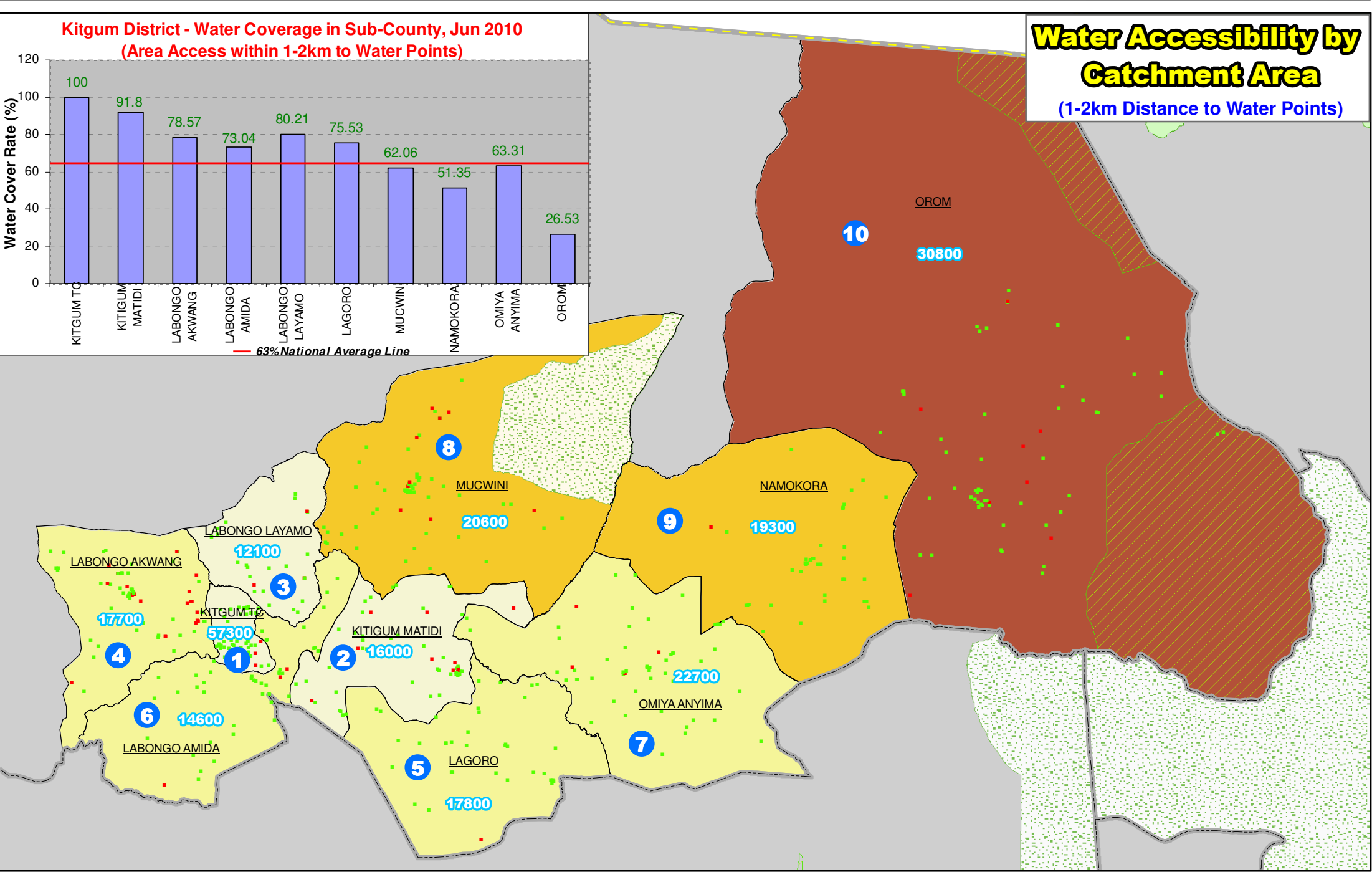
Water Accessibility by Catchment Population



Kitgum District - Water Coverage in Sub-County, Jun 2010 (Area Access within 1-2km to Water Points)



Water Accessibility by Catchment Area (1-2km Distance to Water Points)



Legend

<p>Ratio of Access to Water</p> <ul style="list-style-type: none"> 80 - 100% Above Nat Avg (63%) 63 - 80% 40 - 63% Below Nat Avg (63%) <= 40% 	<p>Operational Status</p> <ul style="list-style-type: none"> Functional Non-Functional 999 Projected Pop 2010 Water Accessibility Index Rank 	<p>Boundary</p> <ul style="list-style-type: none"> National Boundary District Boundary Sub-County Boundary 	<p>Landuse Type</p> <ul style="list-style-type: none"> Forest Reserve Game Reserve National Park Rangeland Lakes/Water Body
---	---	--	---

Notes:

- Ratio of Water accessibility (population and Area) within a sub-county is calculated by using Catchment population per water point and distance (1-2km radius). Access distance is based on aerial distance - assumed that people travel most direct route in plain area.
- Water coverage information presented in this map is based on available locations of operational Water Points from the District. Ratio of coverage change over time. For updated information, please contact the respective DWO & Cluster Leads directly.

Data Sources:
 Admin Boundaries - UBOS 2006
 Landuse/Demography - UBOS
 Road Network - FAO, District Partners, OCHA
 Villages - Humanitarian Agencies
 Thematic - DWO/Partners, June 2010

Map Disclaimer:
 The boundaries and names shown and the designations used on this map do not imply official endorsement or acceptance by the United Nations.

Map Prepare: 05 July, 2010 (IMU/UNOCHA, Kampala)
 File: UG-WASH-38_A3_05July2010_Kitgum District - Water Accessibility Rank by Pop & Area in Sub-county.mxd (nk)

This map is a work in progress. Please contact the IMU/OCHA as soon as possible with any corrections.

Draft

