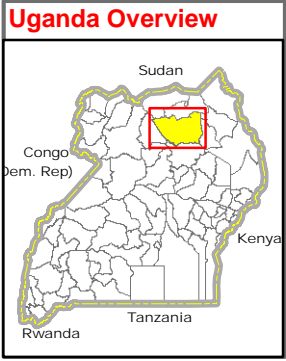


# PADER DISTRICT: Composite Basic Service Index in Sub-County (June 2010)



**Legend**

- National Boundary
- District Boundary
- Sub-County Boundary
- Motorable Road

**Landuse Type**

- Forest Reserve
- Game Reserve
- National Park
- Rangeland
- Water Body/Lakes

**Composite Access**

- 9.56 - 25% Average Ratio of Access to Education, Health, and Water
- 25 - 50%
- 50 - 75%
- 75 - 100%

999 Projected Pop 2010

E: --> Education  
 H: --> Health  
 W: --> Water

**Notes:**

- Ratio of populated area covered by operational basic services (education, health, and water points) within a sub-county is calculated by using national standards distance (2.5km for Education, 5km for Health, and 2km for Water Points). Approximate area falls inside those zones are treated as accessible & falls outside are treated as not accessible. Accessibility is based on aerial distance. Assumed that people travel most direct route in plain area.
- Service Access Index is calculated using Index formula  $I = (X - \text{Min}) / (\text{Max} - \text{Min})$ . Composite Index is average of 3 services (education, health, and water) in Sub-County. Coverage and Accessibility change over time. For updated information, please contact the respective District Offices & Cluster Leads.

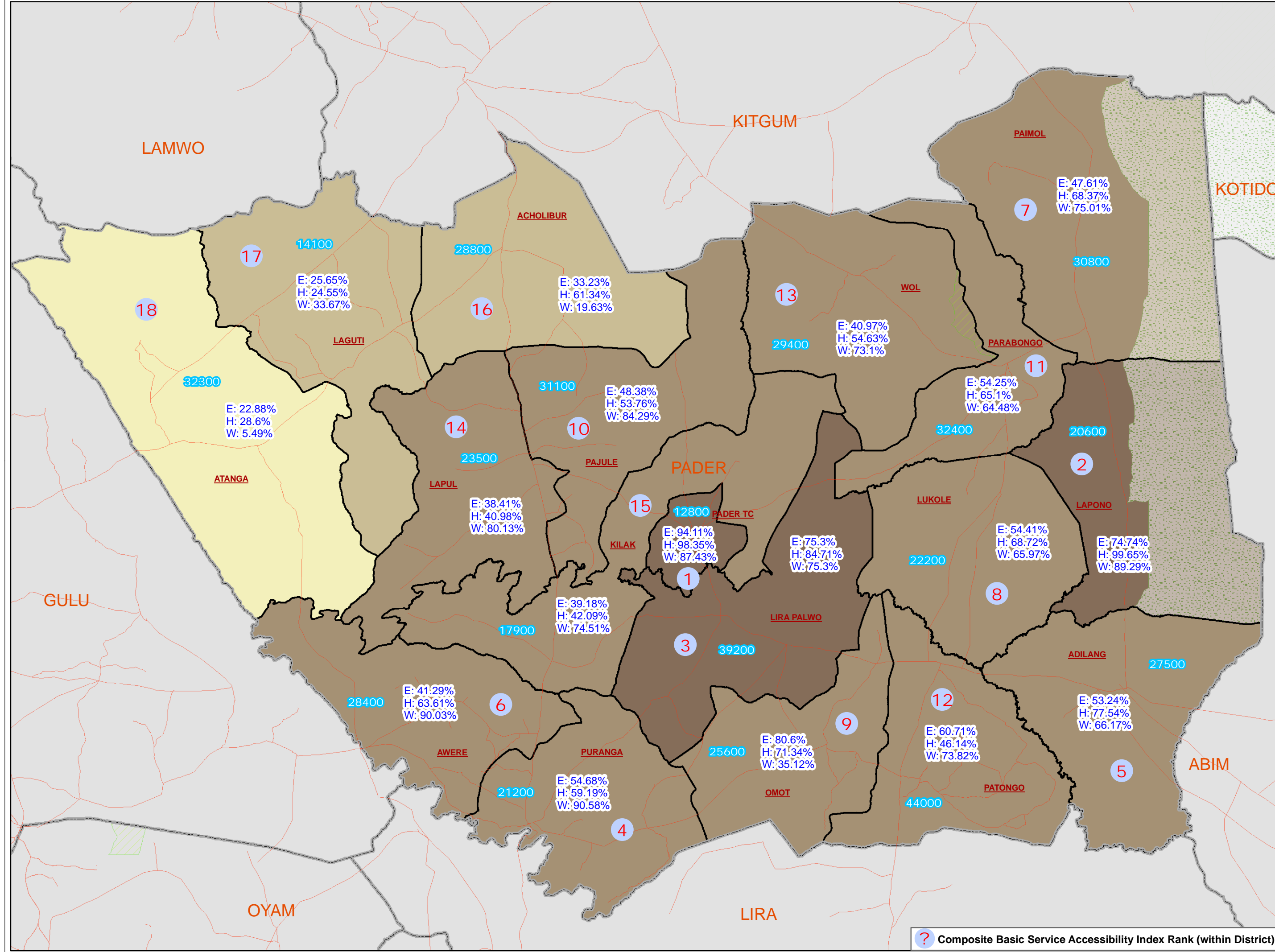
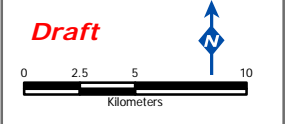
**Data Sources:**

- Admin Boundaries - UBOS 2006
- Demography - UBOS
- Landuse - UBOS 2006
- Road Network - FAO, District
- Thematic - Calculated based on available service centers (education, health, and water points)

*This map is a work in progress. Please contact the IMU/OCHA as soon as possible with any corrections.*

Map Disclaimer:

The boundaries and names shown and the designations used on this map do not imply official endorsement or acceptance by the United Nations.



**Composite Basic Service Accessibility Index Rank (within District)**