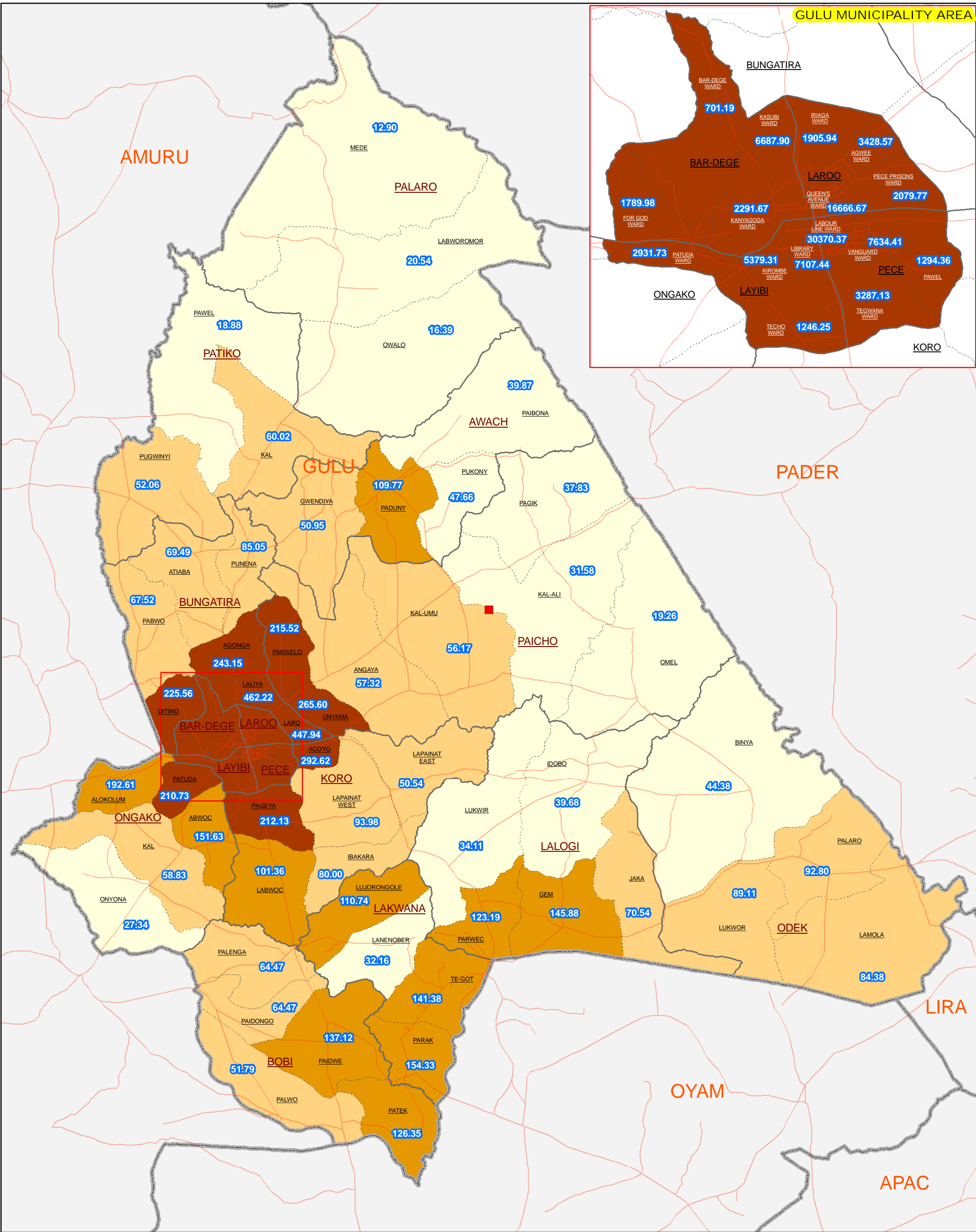


GULU DISTRICT: POPULATION DENSITY IN PARISH (Population per Sq.Km Populated Area)



Legend

Pop Density per SqKm

- <= 50
- 50 - 100
- 100 - 200
- 200 - 30370.37

National Boundary
 District Boundary
 Sub-County Boundary
 Parish Boundary

— Motorable Road
■ District Admin Centres
99.9 Pop/SqKm in Parish

Notes:

- Population density is calculated on Parish area derived from UBOS 2006 boundary information.
- While calculating population density, non-populated area such as (forest reserve, game reserve, rangeland, lakes/water body, etc.) are excluded from total area.

Data Sources:

- Admin Boundaries - UBOS 2006
- Admin Centres - UBOS 2002/2006
- Road Network - FAO, District Partners, UNOCHA
- Projected Population - UBOS

Map Prepare Date: 21 June 2010 (IMU/UNOCHA, Kampala)
 File: UG-DEMO-05_A3_21June2010_Gulu District Population Density by Parish (nk)

This map is a work in progress. Please contact the IMU/Ocha as soon as possible with any corrections.

Map Disclaimer:

The boundaries and names shown and the designations used on this map do not imply official endorsement or acceptance by the United Nations.

Draft

