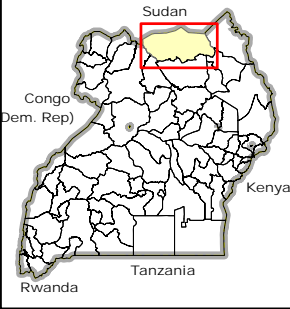


Kitgum District: Hepatitis E Cases by Sub-County

(EPI Week 17: as of 26 April 2009)

Uganda Overview



Legend

- IDP Camp
- IDP Returnee Site
- Motorable Road

Kitgum_Hepatitis_26April2009

Hev-E_Cumulative Cases

- 1 - 100
- 101 - 300
- 301 - 1112
- 1113 - 2108

Kitgum_Hepatitis_26April2009

New Cases (Week 17 '09)

- 1 - 2
- 3 - 5
- 6 - 8

- Sub-County Boundary
- National Boundary
- District Boundary

Note:

Cumulative cases and cumulative deaths are recorded since the onset of the epidemic on 25 Oct 2007.

New cases are registered in EPI week 17 in 2009.

Data Sources:

Admin Boundaries - UBOS 2006
 Road Network - NUDC, FAO
 IDP Camp/Settlements - Humanitarian Agencies in Kitgum Districts.
 Thematic - WHO Kitgum - 26 April 2009

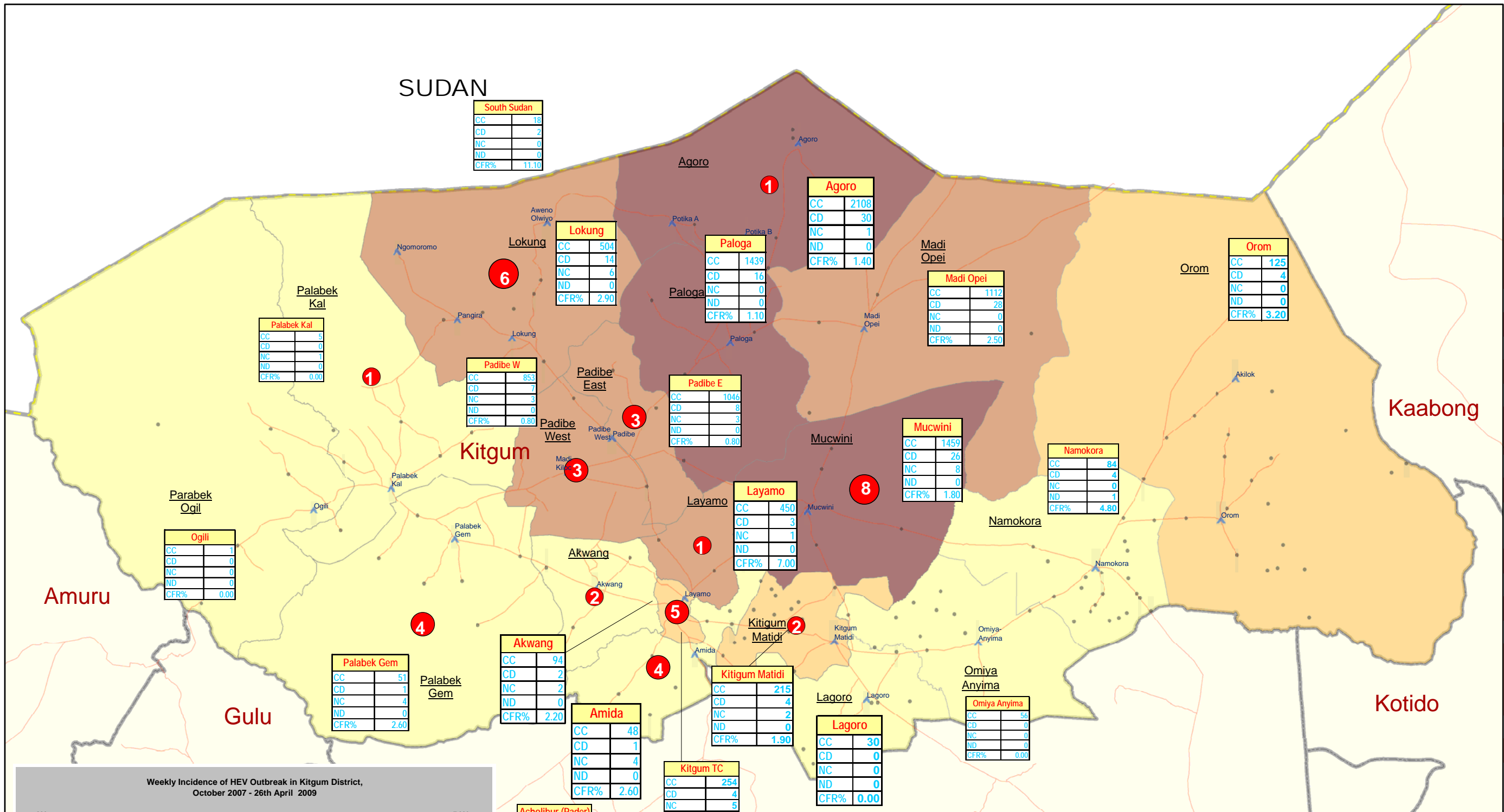
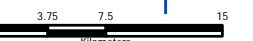
Hep E cases are updated by WHO Office in Kitgum. Please contact WHO-Kitgum directly for details information.

This map is a work in progress. Please contact the IMU/OCHA as soon as possible with any corrections.

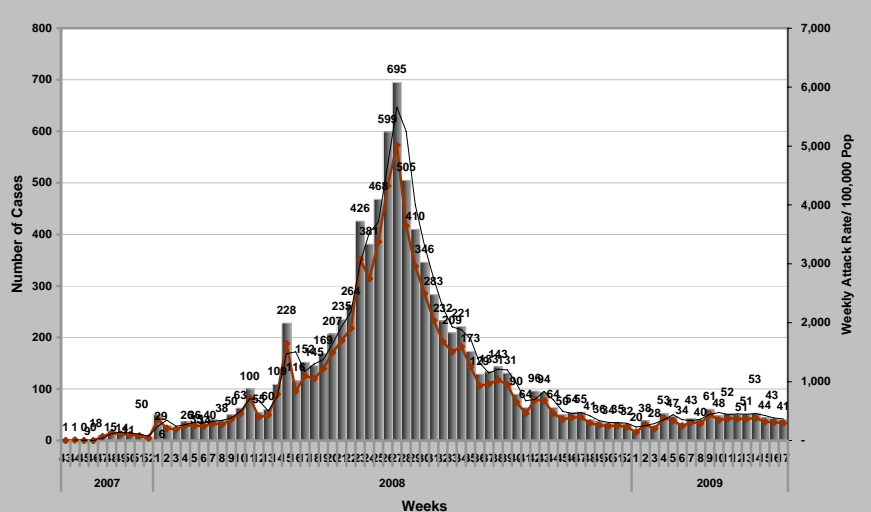
Map Disclaimer:

The boundaries and names shown and the designations used on this map do not imply official endorsement or acceptance by the United Nations.

Draft



Weekly Incidence of HEV Outbreak in Kitgum District, October 2007 - 26th April 2009



Hep E Information		Total
CC	Comulative Cases	9,953
CD	Comulative Deaths	160
NC	New Cases (week 17)	41
ND	New Deaths (week 17)	4
	CFR (%)	1.6

Distribution of Hepatitis E Cases by Sub-county, 26th April 2009

