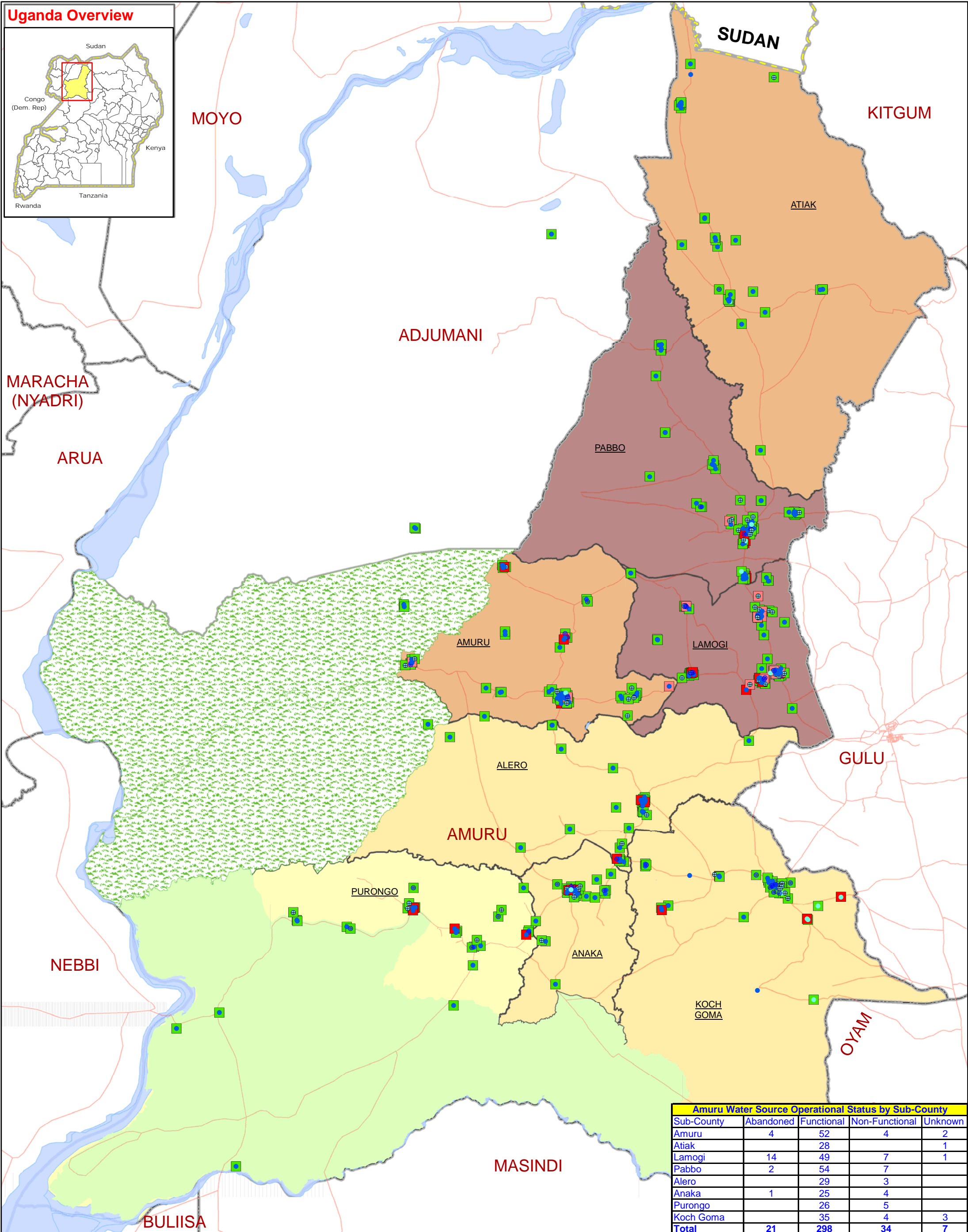
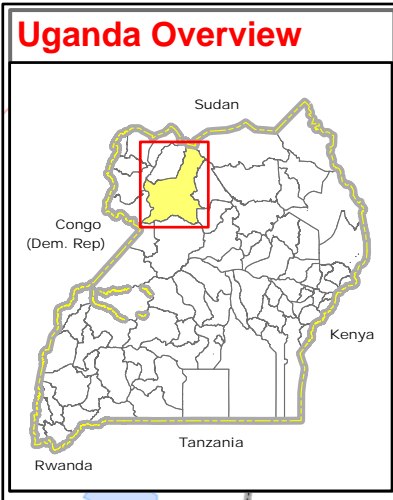


AMURU DISTRICT: Water Source by Operational Status



Amuru Water Source Operational Status by Sub-County				
Sub-County	Abandoned	Functional	Non-Functional	Unknown
Amuru	4	52	4	2
Atiak		28		1
Lamogi	14	49	7	1
Pabbo	2	54	7	
Alero		29	3	
Anaka	1	25	4	
Purongo		26	5	
Koch Goma		35	4	3
Total	21	298	34	7

Legend

<p>Water Source Type</p> <ul style="list-style-type: none"> ● Deep Borehole (249 Nos.) ⊕ Protected Spring (60 Nos.) ● Shallow Well (40 Nos.) ● Others (18 Nos.) 	<p>Water Source Operational Status</p> <ul style="list-style-type: none"> ■ Functional (298 points) ■ Abandoned (21 points) ■ Non-Functional (34 points) — Motorable Road 	<ul style="list-style-type: none"> ■ Game Reserve ■ National Park ■ Lakes/Water Body ■ National Boundary ■ District Boundary ■ Sub-County Boundary 	<p>Total Population (09 Projection)</p> <ul style="list-style-type: none"> ■ 7900 - 10000 ■ 10001 - 25000 ■ 25001 - 40000 ■ 40001 - 50200
--	--	--	--

Data Sources:

- Admin Boundaries - UBOS 2006
- Road Network - FAO
- Settlements - Humanitarian Agencies
- IDP info - Humanitarian Agencies
- Thematic - District Water Office, Feb 09

Draft

Map Prepare Date: 11 March 2009 (IMU/UNOCHA)
 File: UG-WASH-13_A3_11Mar09_Amuru District Water Source by Operational Status

This map is a work in progress. Please contact the IMU/OCHA as soon as possible with any corrections.
 Map Disclaimer: The boundaries and names shown and the designations used on this map do not imply official endorsement or acceptance by the United Nations.