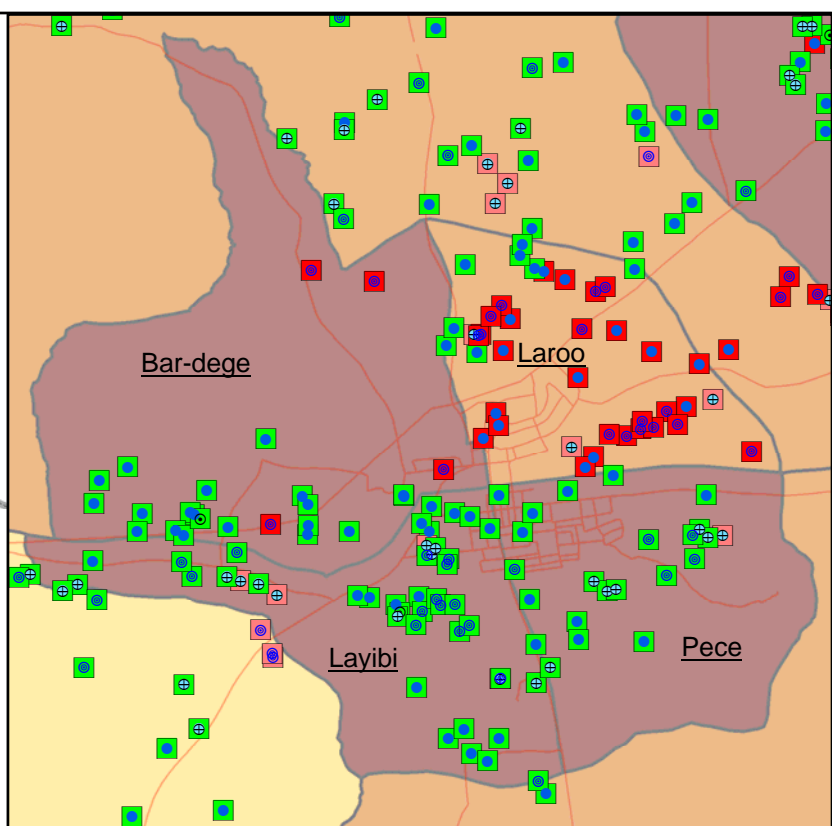
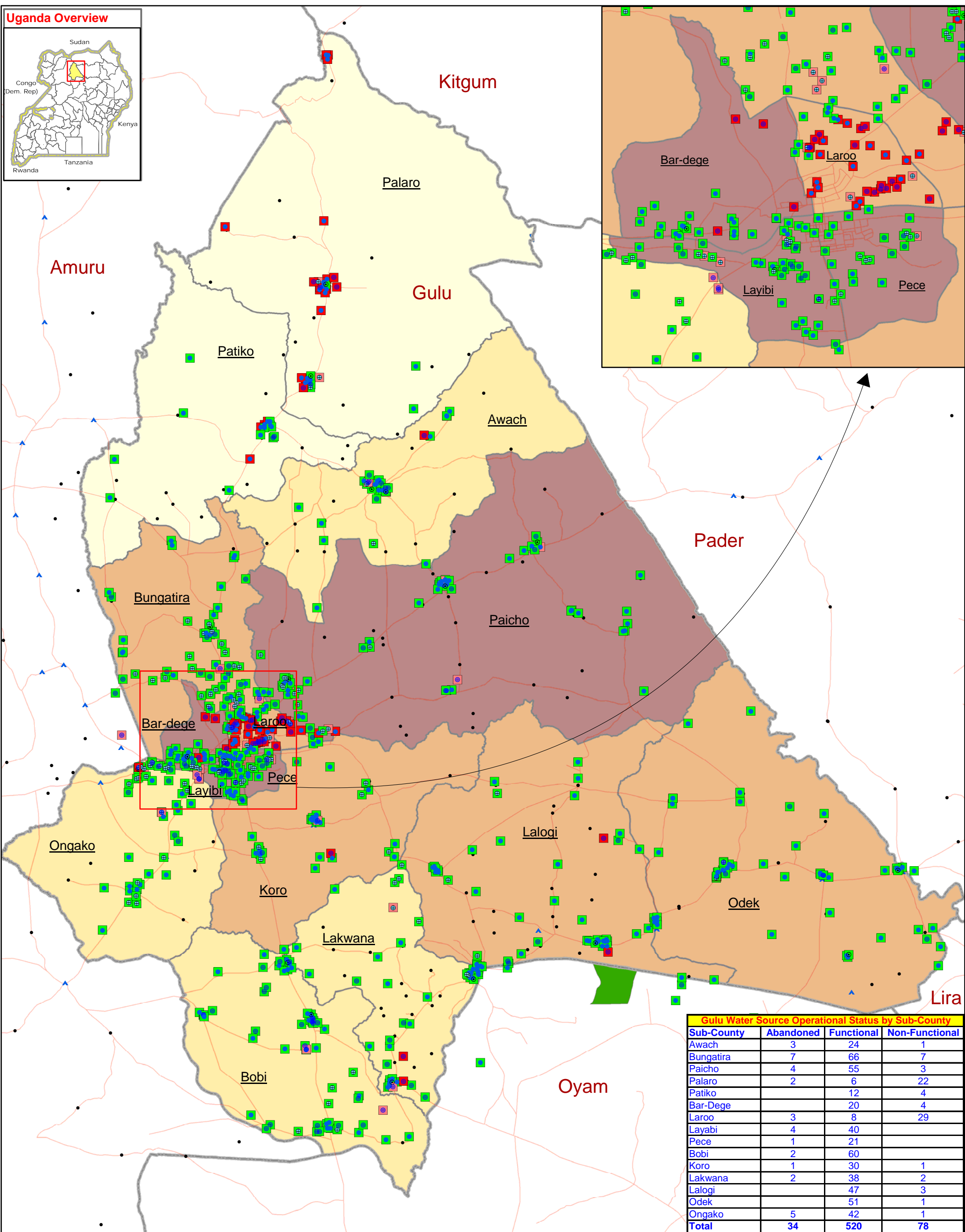


GULU DISTRICT: Water Source by Operational Status



Gulu Water Source Operational Status by Sub-County			
Sub-County	Abandoned	Functional	Non-Functional
Awach	3	24	1
Bungatira	7	66	7
Paicho	4	55	3
Palaro	2	6	22
Patiko		12	4
Bar-Dege		20	4
Laroo	3	8	29
Layabi	4	40	
Pece	1	21	
Bobi	2	60	
Koro	1	30	1
Lakwana	2	38	2
Lalogi		47	3
Odek		51	1
Ongako	5	42	1
Total	34	520	78

Legend

<p>Water Source Type</p> <ul style="list-style-type: none"> ● Deep Borehole (273 Nos.) ⊙ Motorized well (20 Nos.) ⊕ Protected spring (101 Nos.) ● Shallow well (149 Nos.) 	<p>Water Source Operational Status</p> <ul style="list-style-type: none"> ■ Abandoned (34 Points) ■ Temporary Down (78 Points) ■ Functional (520 Points) 	<ul style="list-style-type: none"> ▲ IDP Camp ● IDP Returnee Site ▭ National Boundary ▭ District Boundary ▭ Sub-County Boundary 	<ul style="list-style-type: none"> — Motorable Road ■ Forest Reserve ■ Game Reserve ■ National Park ■ Water 	<p>Total Population (09 Projection)</p> <ul style="list-style-type: none"> ■ 8,000 - 10,000 ■ 10,001 - 20,000 ■ 20,001 - 29,000 ■ 29,001 - 43,900
--	--	--	--	--

Data Sources:
 Admin Boundaries - UBOS 2006
 Road Network - FAO
 Settlements - Humanitarian Agencies
 IDP info - Humanitarian Agencies
 Thematic - District Water Office, Feb 09

Draft

Map Prepare Date: 12 March 2009 (IMU/UNOCHA)
 File: UG-WASH-14_A3_12Mar09_Gulu District Water Source by Operational Status

This map is a work in progress. Please contact the IMU/OCHA as soon as possible with any corrections.

Map Disclaimer:
 The boundaries and names shown on this map do not imply official endorsement or acceptance by the United Nations.