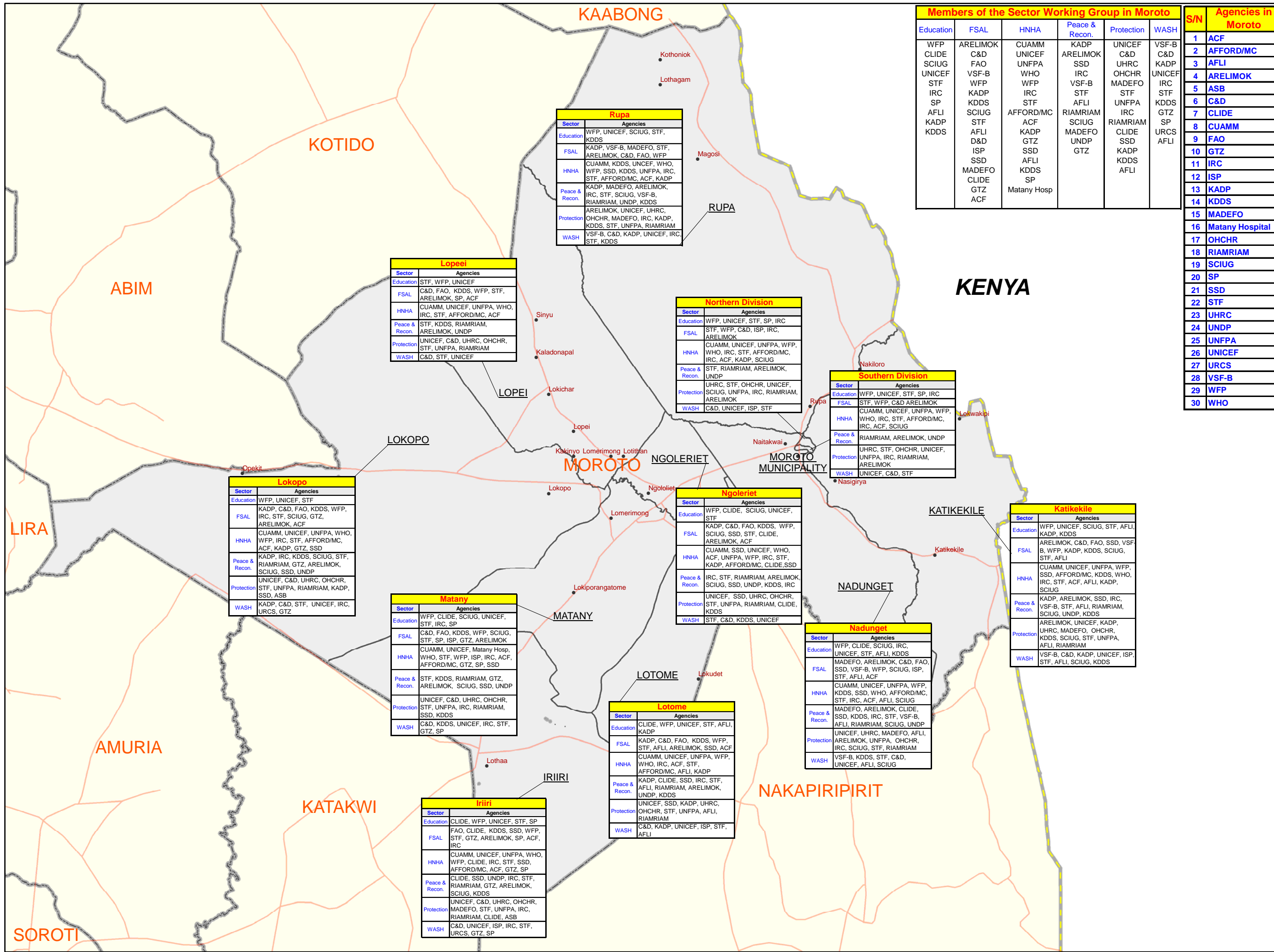
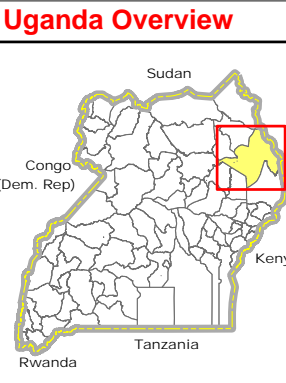


Moroto District: Humanitarian Presence by Sector and Sub-County (Jan 2010)



Members of the Sector Working Group in Moroto					
Education	FSAL	HNHA	Peace & Recon.	Protection	WASH
WFP	ARELIMOK	CUAMM	KADP	UNICEF	VSF-B
CLIDE	C&D	UNICEF	ARELIMOK	C&D	C&D
SCIUG	FAO	UNFPA	SSD	UHRC	KADP
UNICEF	VSF-B	WHO	IRC	OHCHR	UNICEF
STF	WFP	WFP	VSF-B	MADEFO	IRC
IRC	KADP	IRC	STF	STF	STF
SP	KDDS	STF	AFLI	UNFPA	KDDS
AFLI	SCIUG	AFFORD/MC	RIAMRIAM	IRC	GTZ
KADP	STF	ACF	SCIUG	RIAMRIAM	SP
KDDS	D&D	KADP	MADEFO	CLIDE	URCS
	ISP	SSD	UNDP	SSD	AFLI
	SSD	AFLI	GTZ	KADP	
	MADEFO	KDDS		KDDS	
	CLIDE	SP		AFLI	
	GTZ	Matany Hosp			
	ACF				

S/N	Agencies in Moroto
1	ACF
2	AFFORD/MC
3	AFLI
4	ARELIMOK
5	ASB
6	C&D
7	CLIDE
8	CUAMM
9	FAO
10	GTZ
11	IRC
12	ISP
13	KADP
14	KDDS
15	MADEFO
16	Matany Hospital
17	OHCHR
18	RIAMRIAM
19	SCIUG
20	SP
21	SSD
22	STF
23	UHRC
24	UNDP
25	UNFPA
26	UNICEF
27	URCS
28	VSF-B
29	WFP
30	WHO



Legend

- Villages
- Motorable Road
- Sub-County Boundary
- District Boundary
- National Boundary

Sector Information	
Education	Education
FSAL	Food Security & Agricultural Livelihoods
HNHA	Health, Nutrition and HIV/AIDS
Peace & Recon.	Peace and Reconciliation
Protection	Protection (Human Rights, Rule of Law, Child, GBV)
WASH	Water, Sanitation & Hygiene

Data Sources:
 Admin Boundaries - UBOS 2006
 Kotido Boundaries - UBOS 2006
 Road Network - FAO
 Village locations - Humanitarian Agencies
 Thematic - Ocha, Moroto - 8 Feb 2010

W3 information are updated by Ocha field offices based on inputs received from organizations and in collaboration with local government of respective district.

This map is a work in progress. Please contact the IMU/Ocha as soon as possible with any corrections.

Map Disclaimer:
 The boundaries and names shown and the designations used on this map do not imply official endorsement or acceptance by the United Nations.