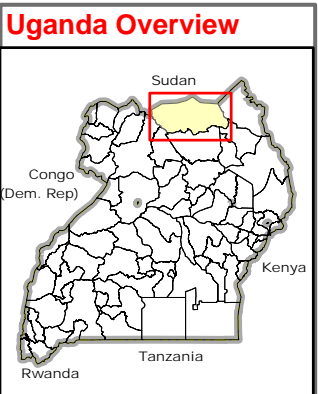
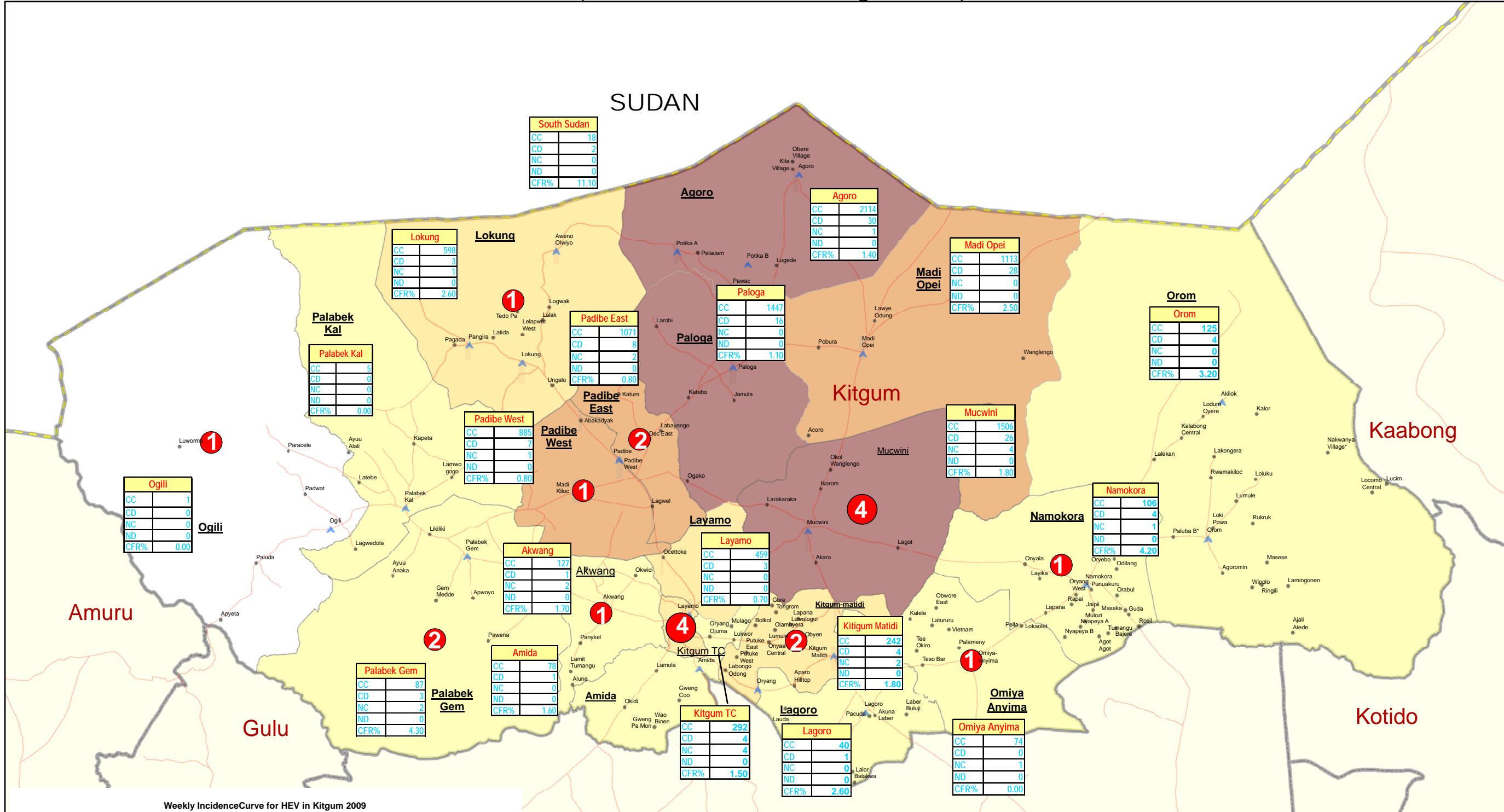


Kitgum District: Hepatitis E Cases by Sub-County

(EPI Week 33: as of 16 August 2009)



Legend

- ▲ IDP Camp
- IDP Returnee Site
- Motorable Road
- ▭ Sub-County Boundary
- ▭ District Boundary
- ▭ National Boundary

New Cases (week 33 '09)

- 1 - 2
- 3 - 4

Hev E- Cumulative Cases

- 5 - 127
- 128 - 598
- 599 - 1113
- 1114 - 2114

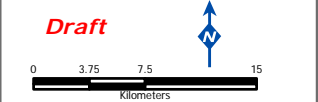
Note:
 Cumulative cases and cumulative deaths are recorded since the onset of the epidemic on 25 Oct 2007.
 New cases are registered in EPI Week 33 in 2009.

Data Sources:
 Admin Boundaries - UBOS 2006
 Road Network - NUDC, FAO
 IDP Camp/Settlements - Humanitarian Agencies in Kitgum Districts.
 Thematic - WHO Kitgum - 16 August 2009

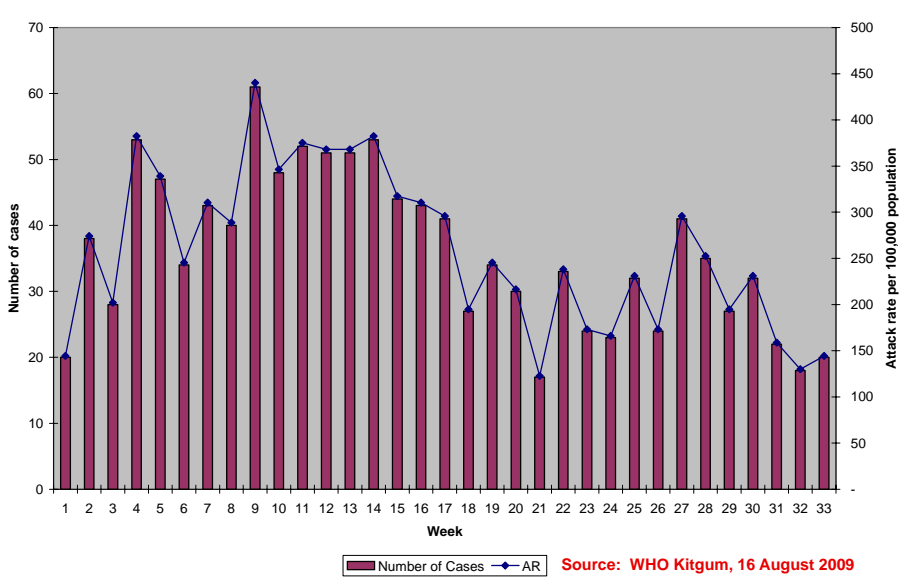
Hep E cases are updated by WHO Office in Kitgum. Please contact WHO-Kitgum directly for details information.

This map is a work in progress. Please contact the IMU/Ocha as soon as possible with any corrections.

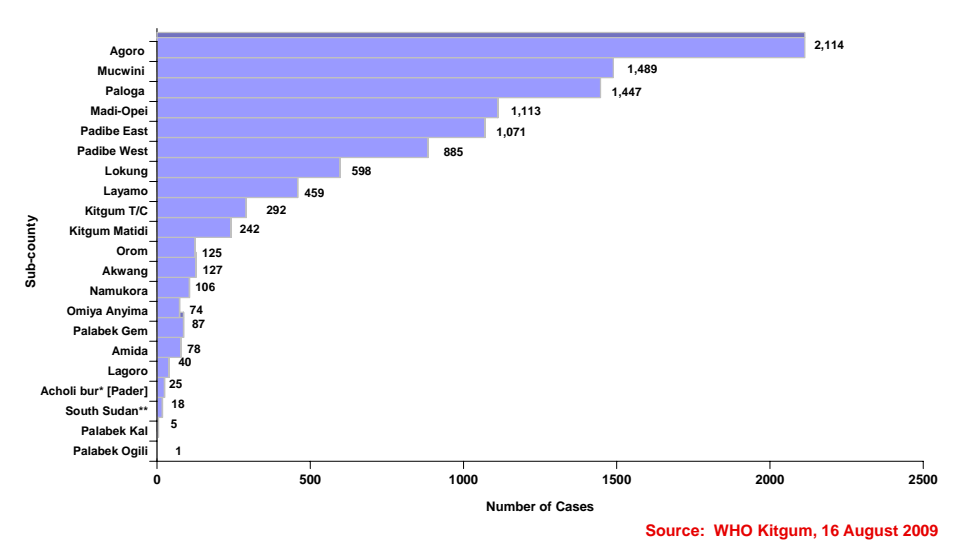
Map Disclaimer:
 The boundaries and names shown and the designations used on this map do not imply official endorsement or acceptance by the United Nations.



Weekly Incidence Curve for HEV in Kitgum 2009



Distribution of Hepatitis E Cases by Sub-county, 16th August 2009



Hep E Information		Total
CC	Comulative Cases	10,397
CD	Comulative Deaths	165
NC	New Cases (week 33)	20
ND	New Deaths (week 33)	0
	CFR (%)	1.6