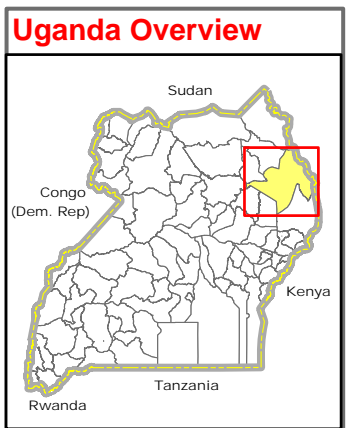
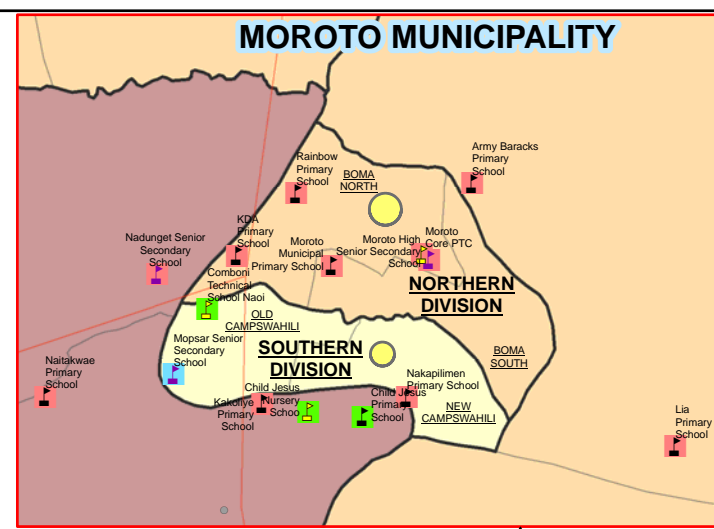
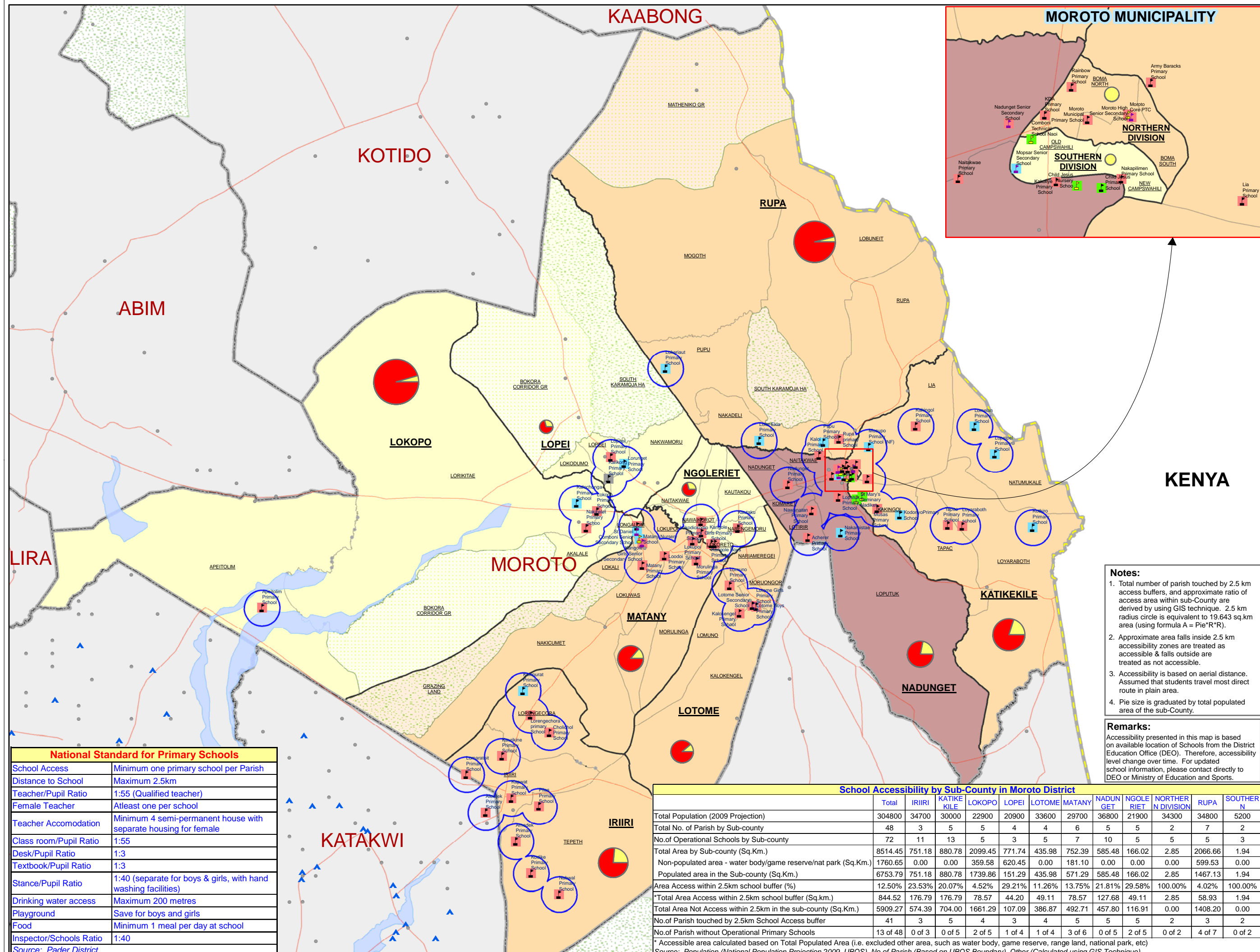


MOROTO DISTRICT: School Accessibility by Sub-County (Apr 2009)



Legend

- Village
- IDP Camp (Surrounding districts)

Operational Schools by Type

- Primary School (60 Nos.)
- Secondary School (6 Nos.)
- Others (6 Nos.)

School by Ownership

- Government (50 Nos.)
- Community (16 Nos.)
- Private (5 Nos.)
- Unknown (1 No.)

Landuse Type

- Forest Reserve
- Game Reserve
- National Park
- Rangeland
- Lakes/Water Body

Total Population 2009 (Projection)

- 5200 - 25000
- 25001 - 35000
- 35001 - 36800

Pie (Ratio of Populated Area)

- Access
- No Access

Notes:

- Total number of parish touched by 2.5 km access buffers, and approximate ratio of access area within sub-County are derived by using GIS technique. 2.5 km radius circle is equivalent to 19,643 sq.km area (using formula $A = \text{Pie} \times R^2$).
- Approximate area falls inside 2.5 km accessibility zones are treated as accessible & falls outside are treated as not accessible.
- Accessibility is based on aerial distance. Assumed that students travel most direct route in plain area.
- Pie size is graduated by total populated area of the sub-County.

Remarks:
 Accessibility presented in this map is based on available location of Schools from the District Education Office (DEO). Therefore, accessibility level change over time. For updated school information, please contact directly to DEO or Ministry of Education and Sports.

National Standard for Primary Schools

School Access	Minimum one primary school per Parish
Distance to School	Maximum 2.5km
Teacher/Pupil Ratio	1:55 (Qualified teacher)
Female Teacher	Atleast one per school
Teacher Accomodation	Minimum 4 semi-permanent house with separate housing for female
Class room/Pupil Ratio	1:55
Desk/Pupil Ratio	1:3
Textbook/Pupil Ratio	1:3
Stance/Pupil Ratio	1:40 (separate for boys & girls, with hand washing facilities)
Drinking water access	Maximum 200 metres
Playground	Save for boys and girls
Food	Minimum 1 meal per day at school
Inspector/Schools Ratio	1:40

Source: Pader District

School Accessibility by Sub-County in Moroto District

	Total	IRIRI	KATIKE KILE	LOKOPO	LOPEI	LOTOME	MATANY	NADUNGET	NGOLE RIET	NORTHER N DIVISION	RUPA	SOUTHER N
Total Population (2009 Projection)	304800	34700	30000	22900	20900	33600	29700	36800	21900	34300	34800	5200
Total No. of Parish by Sub-county	48	3	5	5	4	4	6	5	5	2	7	2
No. of Operational Schools by Sub-county	72	11	13	5	3	5	7	10	5	5	5	3
Total Area by Sub-county (Sq.Km.)	8514.45	751.18	880.78	2099.45	771.74	435.98	752.39	585.48	166.02	2.85	2066.66	1.94
Non-populated area - water body/game reserve/nat park (Sq.Km.)	1760.65	0.00	0.00	359.58	620.45	0.00	181.10	0.00	0.00	0.00	599.53	0.00
Populated area in the Sub-county (Sq.Km.)	6753.79	751.18	880.78	1739.86	151.29	435.98	571.29	585.48	166.02	2.85	1467.13	1.94
Area Access within 2.5km school buffer (%)	12.50%	23.53%	20.07%	4.52%	29.21%	11.26%	13.75%	21.81%	29.58%	100.00%	4.02%	100.00%
*Total Area Access within 2.5km school buffer (Sq.km.)	844.52	176.79	176.79	78.57	44.20	49.11	78.57	127.68	49.11	2.85	58.93	1.94
Total Area Not Access within 2.5km in the sub-county (Sq.Km.)	5909.27	574.39	704.00	1661.29	107.09	386.87	492.71	457.80	116.91	0.00	1408.20	0.00
No. of Parish touched by 2.5km School Access buffer	41	3	5	4	3	4	5	5	5	2	3	2
No. of Parish without Operational Primary Schools	13 of 48	0 of 3	0 of 5	2 of 5	1 of 4	1 of 4	3 of 6	0 of 5	2 of 5	0 of 2	4 of 7	0 of 2

* Accessible area calculated based on Total Populated Area (i.e. excluded other area, such as water body, game reserve, range land, national park, etc)
 Source: Population (National Population Projection 2009, UBOS), No. of Parish (Based on UBOS Boundary), Other (Calculated using GIS Technique)

Data Sources:
 Admin Boundaries - UBOS 2006
 Road Network - FAO
 Settlements - Humanitarian Agencies in Districts.

Thematic - Moroto District Education Office, Updated in Apr 2009

This map is a work in progress. Please contact the IMU/Ocha as soon as possible with any corrections.

Map Disclaimer:
 The boundaries and names shown and the designations used on this map do not imply official endorsement or acceptance by the United Nations.

Draft

Map Prepare Date: 22 Apr 09 (IMU Kampala/UNOCHA)
 File: UG-Education-06_A3_22Apr09_Moroto District School Accessibility by Sub-County.mdx