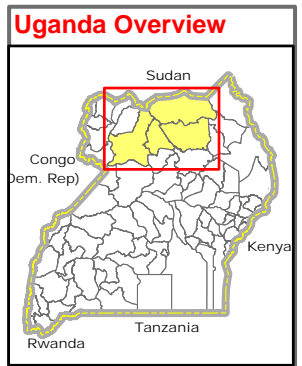
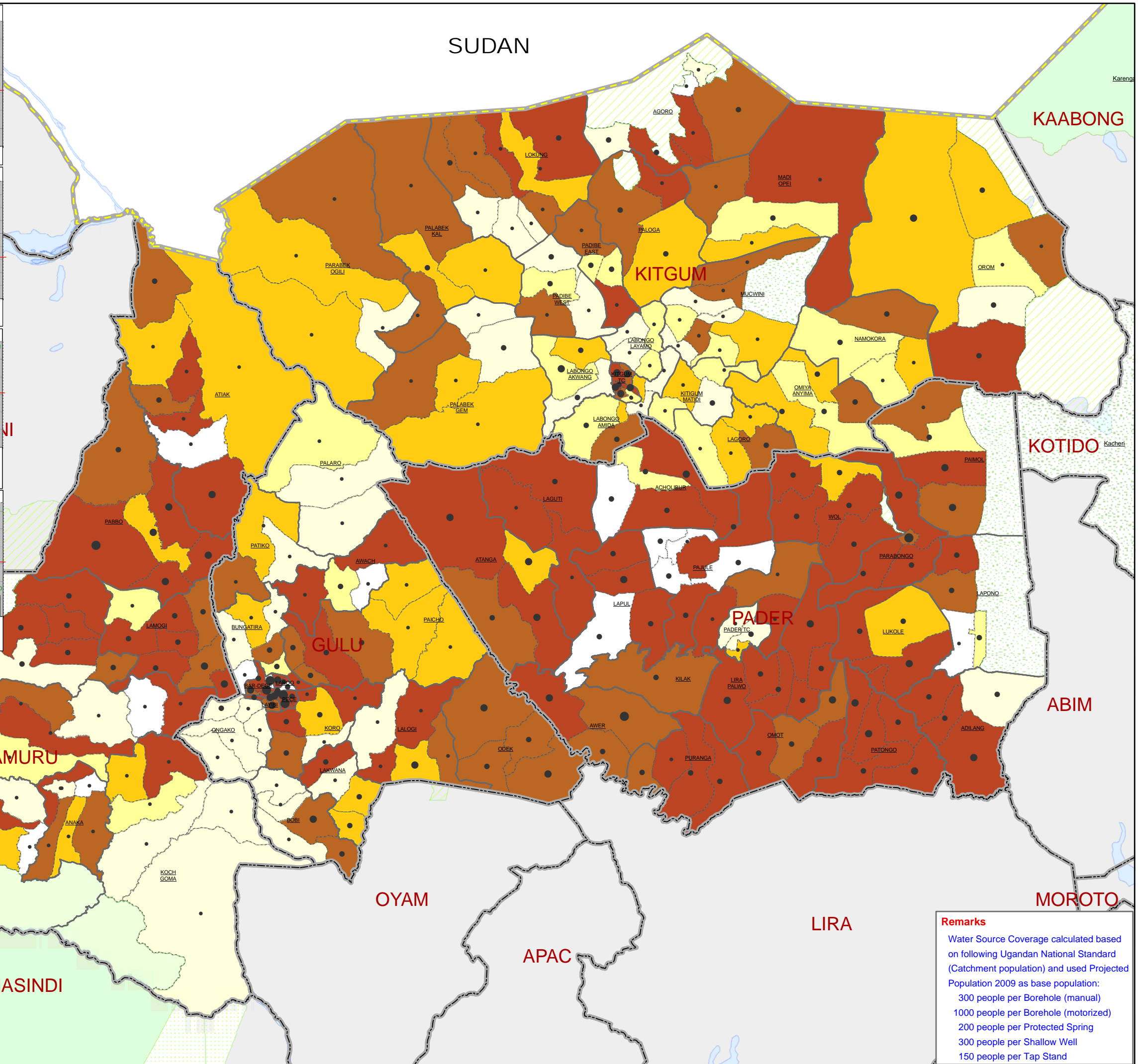
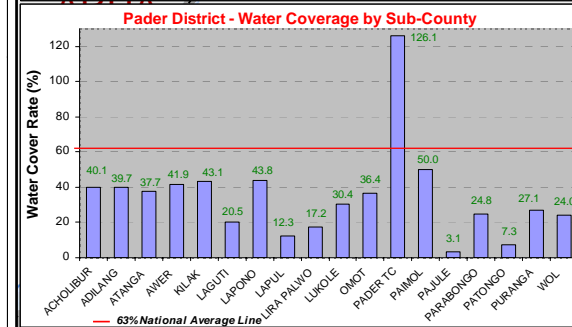
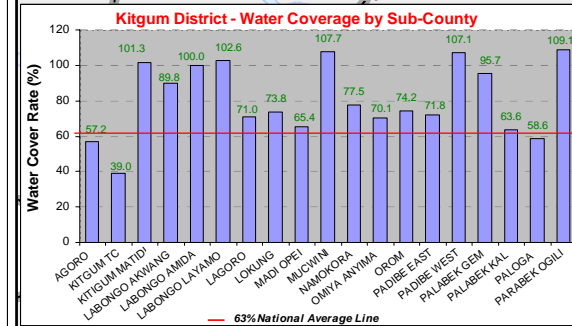
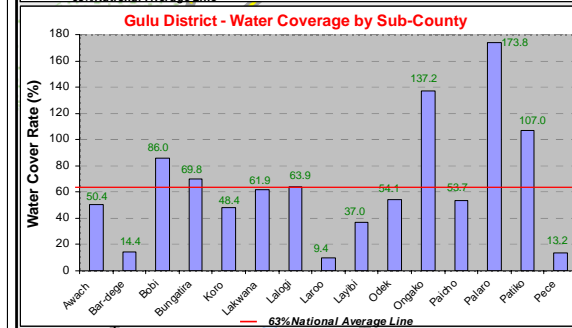
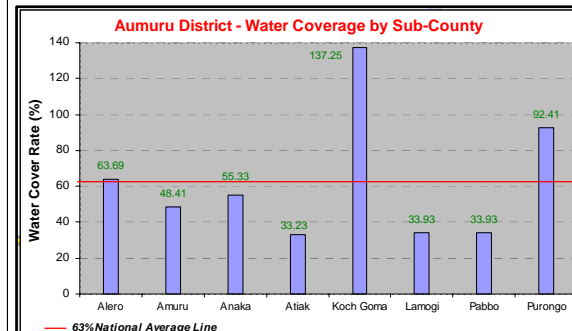


ACHOLI SUB-REGION: WATER SOURCES COVERAGE BY PARISH



Legend

- National Boundary
- District Boundary
- Sub-County Boundary
- Parish Boundary

Landuse Type

- Forest Reserve
- Game Reserve
- National Park
- Rangeland
- Lakes/Water Body

Total Population 09

- 700 - 4000
- 4001 - 7000
- 7001 - 10000
- 10001 - 20100

Ratio of Water Coverage

- 100% - 375% Above Nat
- 80% - 100% Avg (63%)
- 63.1% - 80%
- 40% - 62.99%
- 3% - 40% Below Nat
- Avg (63%)
- No Cover/No Data

Notes:

- Thematic information presented in this map is based on available information received during Feb - June 2009 from District Water Office and district partners. Therefore, water source coverage and operational status change over time. For updated information, please contact directly to the District Water Office in the respective district.
- Some 180 water points received are not included in this map and calculation due to lack of GPS coordinates and locational references.
- Some duplicates and gaps are obvious (gaps are mainly in Pader district).

Data Sources:

- Admin Boundaries - UBOS 2006
- Landuse - UBOS 2006
- IDP/Return Sites - Humanitarian Agencies
- Thematic - District Water Office/ District Partners, Feb - June 09
- Projected Population 09 - UBOS
- Water Coverage - Calculated

Map Disclaimer:

The boundaries and names shown and the designations used on this map do not imply official endorsement or acceptance by the United Nations.

Remarks

Water Source Coverage calculated based on following Ugandan National Standard (Catchment population) and used Projected Population 2009 as base population:

- 300 people per Borehole (manual)
- 1000 people per Borehole (motorized)
- 200 people per Protected Spring
- 300 people per Shallow Well
- 150 people per Tap Stand

Draft

0 5 10 20 Kilometers

Map Prepare Date: 12 June 2009 (IMU/UNOCHA, KfA)
 File: UG-WASH-18_A1_12June09_Acholi Sub-Region Water Sources Coverage by Parish