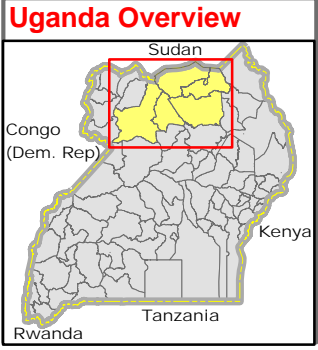
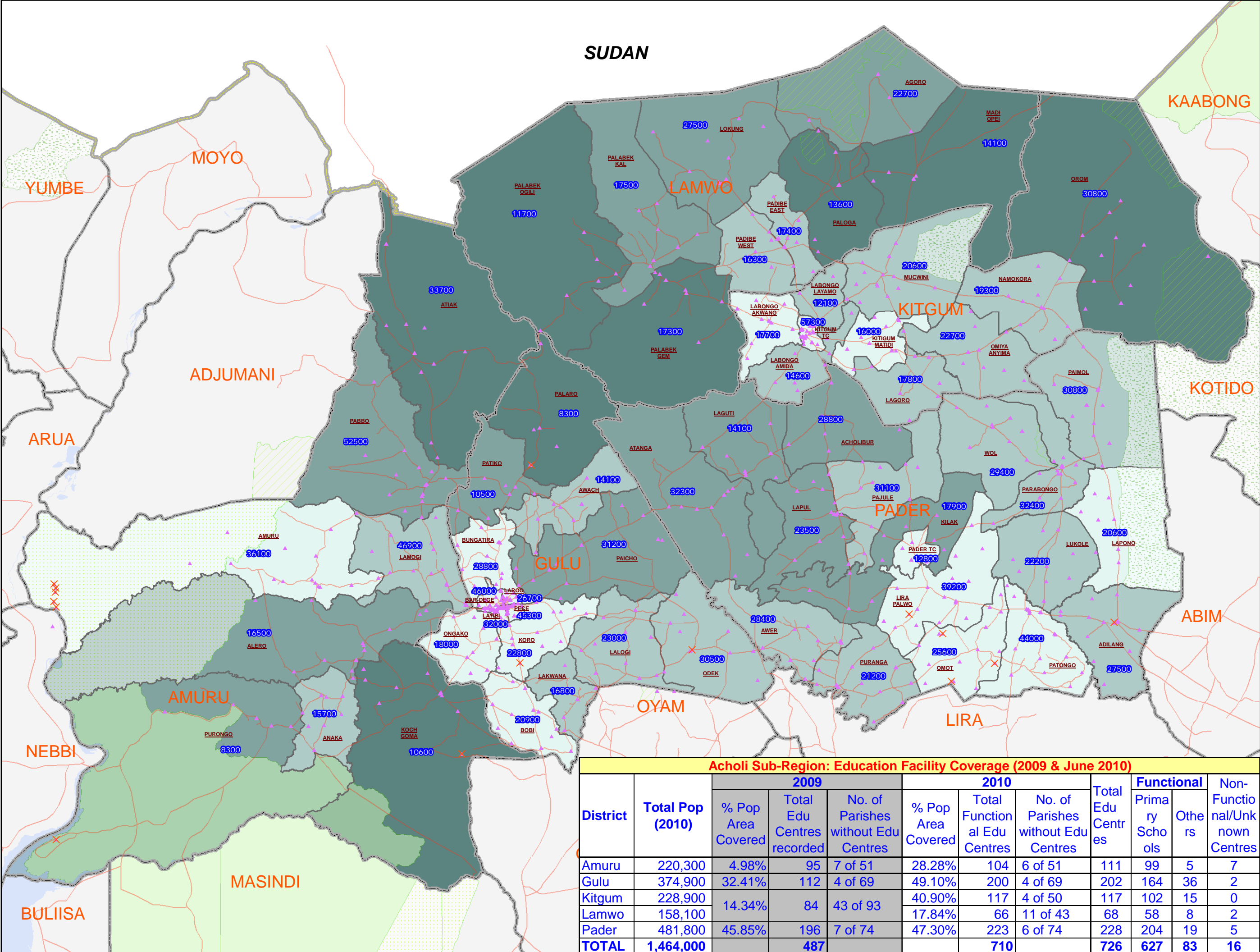


ACHOLI SUB-REGION: Ratio of Populated Area Covered by Education Facilities in Sub-County (June 2010)



Legend

- ▲ Education Centres
- ✕ Unknown Status

%Area Covered by Schools

Light Green	60 - 100%	Within 2.5km access distance (National Std)
Medium Green	40 - 60%	
Dark Green	20 - 40%	
Very Dark Green	<=20%	

- Motorable Road
- National Boundary
- District Boundary
- Sub-County Boundary

Landuse Type

- Forest Reserve
- Game Reserve
- National Park
- Rangeland
- Water Body/Lakes

9999 Sub-County Projected Pop 2010

Notes:

- Ratio of populated area covered by operational Education Facilities within a Sub-county is calculated by using national standards catchment distance (2.5 km radius distance which is equivalent to 19.643 sq.km area using formula $A=Pie^*R^2$). Approximate area falls inside 2.5km zones are treated as accessible & falls outside are treated as not accessible. Accessibility is based on aerial distance. Assumed that student travel most direct route in plain area.
- Some parishes have no operational education centers within their own parish. However, they still can access facilities from nearby education centers in neighbouring parishes.
- Education coverage presented in this map is based on available locations of operational Education Centres (refer Data Source text below) from the District Education Office (DEO) and partners. It should be noted that coverage ratios change over time. For updated education information, please contact the respective DEO, MoE, & Cluster directly.

Data Sources:

- Admin Boundaries - UBOS 2006
- Landuse - UBOS 2006
- Demography - UBOS Projected
- Road Network - FAO
- Education Centres - DEO & Cluster Leads
- Amuru - DEO/Unicef/MoE, May '10
- Gulu - DEO/Unicef, Apr '10
- Kitgum - DEO/EMIS/UNHCR, May '10
- Lamwo - DEO/EMIS/UNHCR, May '10
- Pader - DEO/Unicef/MoE, May '10
- (Re-verified by respective DEO in June '10)

Acholi Sub-Region: Education Facility Coverage (2009 & June 2010)											
District	Total Pop (2010)	2009			2010			Total Edu Centres	Functional		Non-Functional/Unknown Centres
		% Pop Area Covered	Total Edu Centres recorded	No. of Parishes without Edu Centres	% Pop Area Covered	Total Functional Edu Centres	No. of Parishes without Edu Centres		Primary Scho	Oth	
Amuru	220,300	4.98%	95	7 of 51	28.28%	104	6 of 51	111	99	5	7
Gulu	374,900	32.41%	112	4 of 69	49.10%	200	4 of 69	202	164	36	2
Kitgum	228,900	14.34%	84	43 of 93	40.90%	117	4 of 50	117	102	15	0
Lamwo	158,100	17.84%	66	11 of 43	17.84%	66	11 of 43	68	58	8	2
Pader	481,800	47.30%	196	7 of 74	47.30%	223	6 of 74	228	204	19	5
TOTAL	1,464,000		487			710		726	627	83	16

This map is a work in progress. Please contact the IMU/OCHA as soon as possible with any corrections.

Map Disclaimer:
 The boundaries and names shown and the designations used on this map do not imply official endorsement or acceptance by the United Nations.

Draft

Map Prepare: 24 June, 2010 (IMU/UNOCHA, Kampala)
 File: UG-Education-18_A3_24June10_Acholi Sub-Region Ratio of Populated Area Covered by Education Facilities in Sub-County.mxd (nk)