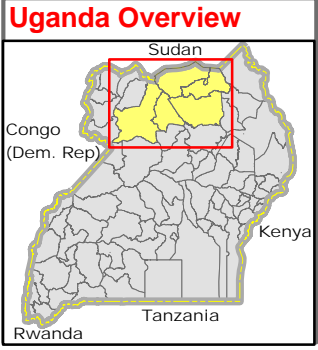
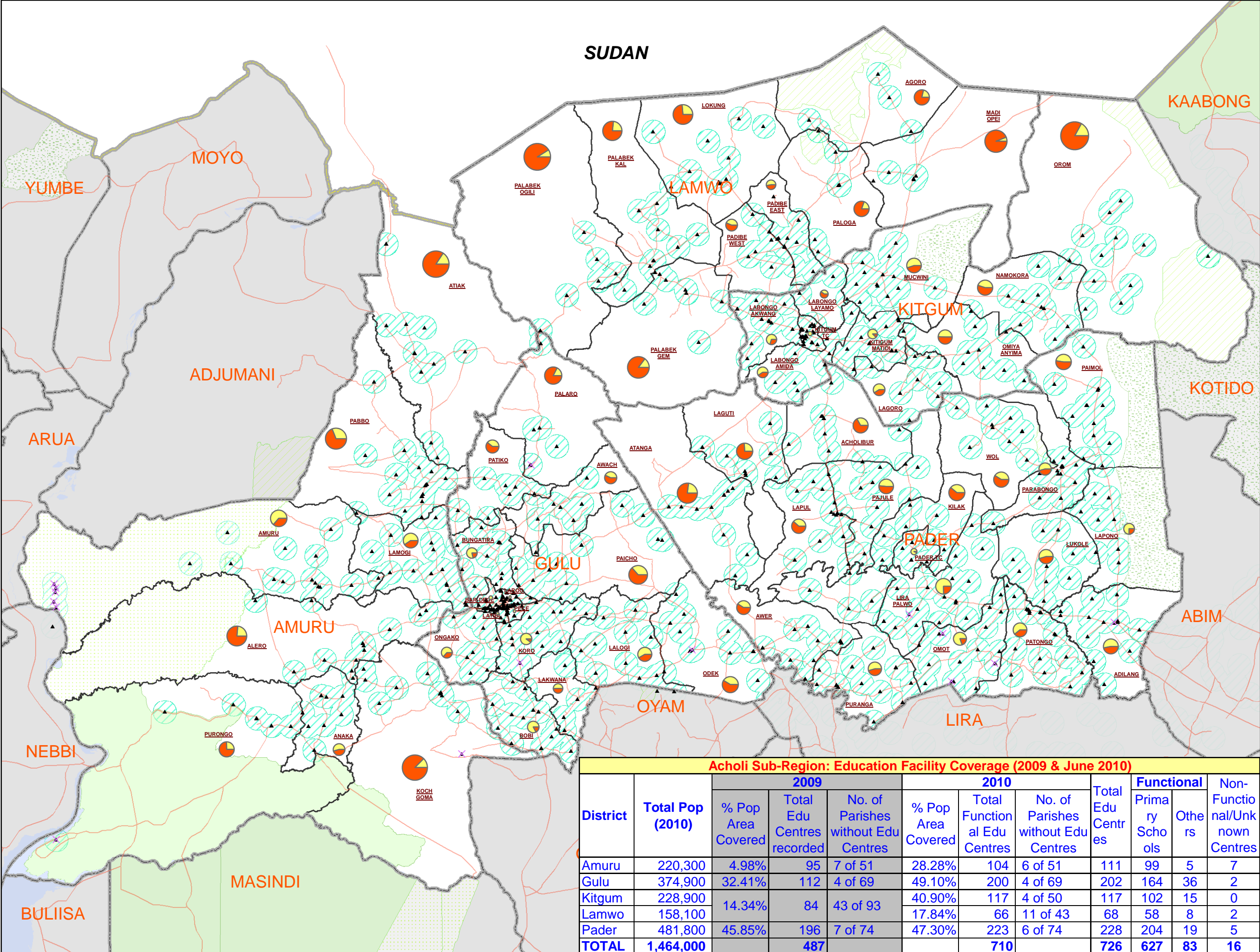


ACHOLI SUB-REGION: Education Accessibility within 2.5km Radius (June 2010)



Legend

- Unknown Status (Purple X)
- Education Centres (Black Triangle)
- Motorable Road (Red Line)
- National Boundary (Thick Grey Line)
- District Boundary (Thin Grey Line)
- Sub-County Boundary (Thin Black Line)

Landuse Type

- Forest Reserve (Green Hatched)
- Game Reserve (Yellow Hatched)
- National Park (Light Green Hatched)
- Rangeland (Dotted)
- Water Body/Lakes (Blue)

Pie (Ratio of Sub-County Area)

- Access to Health Centres (Orange)
- No Access to Health Centres (Yellow)
- 2.5 km Access buffer (<1 hr walk to any school) (Light Blue)

- ### Notes:
- Approximate ratio of accessible area (populated only) within sub-county are derived by using GIS technique. 2.5km radius distance (national standard) which is equivalent to 19.643 sq.km area using formula $A=Pie^*R^2$.
 - Approximate area falls inside 2.5km zones are treated as accessible & falls outside are treated as not accessible.
 - Accessibility is based on aerial distance. Assumed that student travel most direct route in plain area.
 - Pie size is graduated by total populated area of sub-county.
 - Education coverage presented in this map is based on available locations of operational Education Centres (refer Data Source text below) from the District Education Office (DEO) and partners. It should be noted that coverage ratios change over time. For updated education information, please contact the respective DEO, MoE, & Cluster directly.

Data Sources:
 Admin Boundaries - UBOS 2006
 Landuse - UBOS 2006
 Demography - UBOS Projected
 Road Network - FAO
 Education Centres - DEO & Cluster Leads
 Amuru - DEO/Unicef/MoE, May '10
 Gulu - DEO/Unicef, Apr '10
 Kitgum - DEO/EMIS/UNHCR, May '10
 Lamwo - DEO/EMIS/UNHCR, May '10
 Pader - DEO/Unicef/MoE, May '10
 (Re-verified by respective DEO in June '10)

Acholi Sub-Region: Education Facility Coverage (2009 & June 2010)												
District	Total Pop (2010)	2009				2010			Total Edu Centres	Functional		Non-Functional/Unknown Centres
		% Pop Area Covered	Total Edu Centres recorded	No. of Parishes without Edu Centres	% Pop Area Covered	Total Functional Edu Centres	No. of Parishes without Edu Centres	Primary Scho		Oth		
Amuru	220,300	4.98%	95	7 of 51	28.28%	104	6 of 51	111	99	5	7	
Gulu	374,900	32.41%	112	4 of 69	49.10%	200	4 of 69	202	164	36	2	
Kitgum	228,900	14.34%	84	43 of 93	40.90%	117	4 of 50	117	102	15	0	
Lamwo	158,100	17.84%	66	11 of 43	17.84%	66	11 of 43	68	58	8	2	
Pader	481,800	47.30%	196	7 of 74	47.30%	223	6 of 74	228	204	19	5	
TOTAL	1,464,000		487			710		726	627	83	16	

This map is a work in progress. Please contact the IMU/OCHA as soon as possible with any corrections.

Map Disclaimer:
 The boundaries and names shown and the designations used on this map do not imply official endorsement or acceptance by the United Nations.

Draft

Map Prepare: 24 June, 2010 (IMU/UNOCHA, Kampala)
 File: UG-Education-19_A3_24June10_Acholi Sub-Region - Education Service Accessibility within 2500m Radius.mxd (nk)