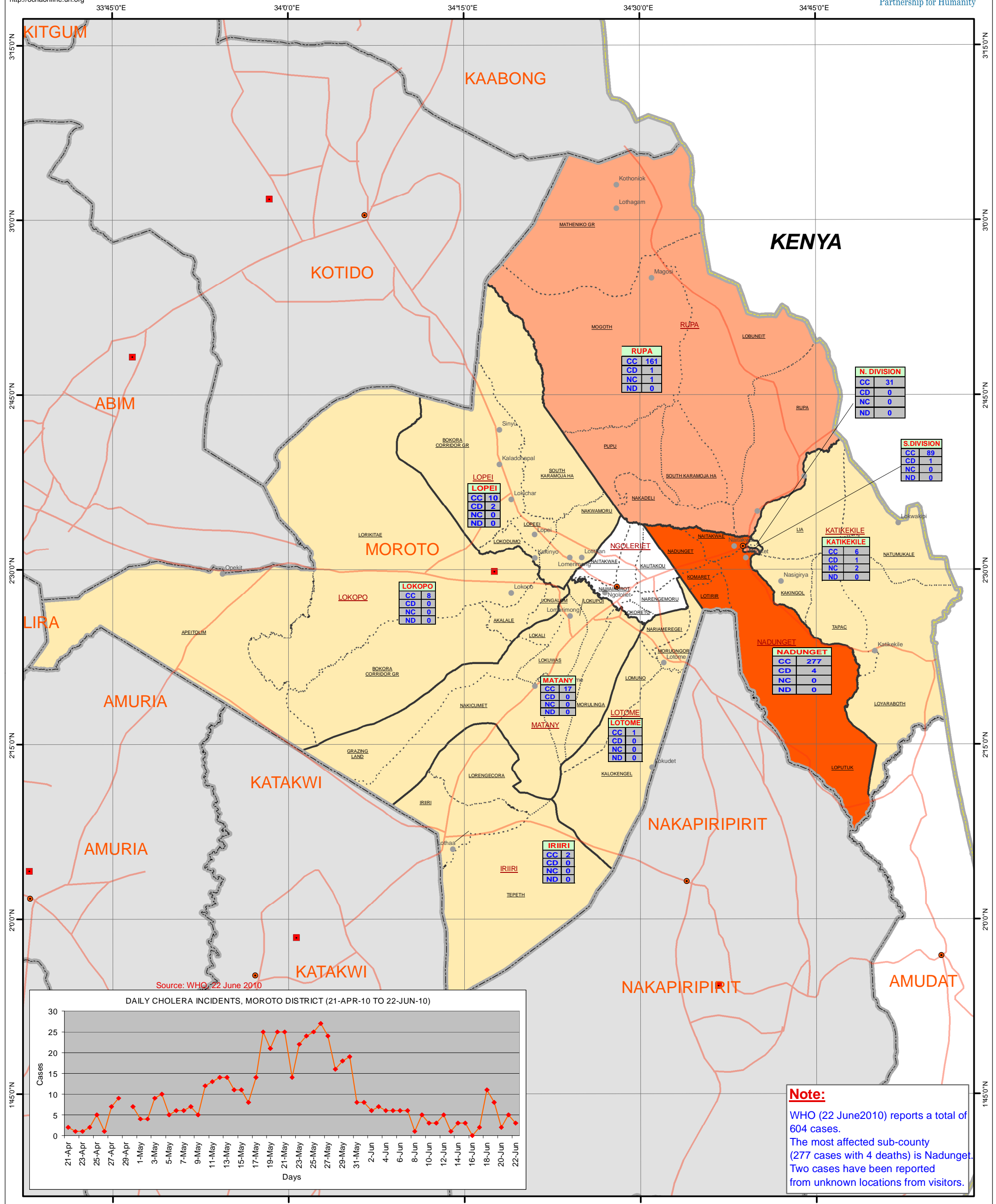
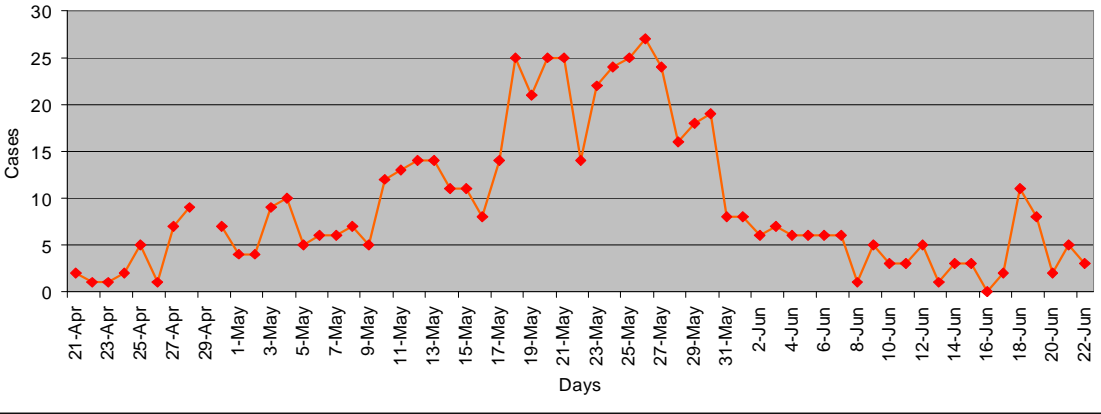


Moroto District: Cholera Affected Areas & Cases (as of 22 June 2010)

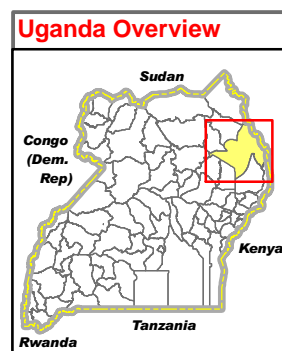


Source: WHO, 22 June 2010

DAILY CHOLERA INCIDENTS, MOROTO DISTRICT (21-APR-10 TO 22-JUN-10)



Note:
 WHO (22 June 2010) reports a total of 604 cases.
 The most affected sub-county (277 cases with 4 deaths) is Nadunget.
 Two cases have been reported from unknown locations from visitors.



Legend

Cholera Cumulative cases*

- 1 - 31
- 32 - 161
- 162 - 277

* Recorded as of 22 June 2010 including 4 deaths since 21 Apr 2010 (when the first suspected case was reported)

- District Center
- Town
- Village
- Motorable Road
- National Boundary
- District Boundary
- Sub-County Boundary
- Parish Boundary

LEGEND	
CC	Cumulative Cases
CD	Cumulative Deaths
NC	New Cases
ND	New Deaths

Data Sources:
 Admin Boundaries - UBOS 2006
 Admin Centers - UBOS 2006
 Road Network - FAO, District, Ocha
 Thematic - WHO/District Task Force, Moroto, 22 June 2010

This map is a work in progress. Please contact the IMU/Ocha as soon as possible with any corrections.

Draft

Map Disclaimer:
 The boundaries and names shown on this map do not imply official endorsement or acceptance by the United Nations.

Map Prepared: 24 June, 2010 (IMU/UNOCHA, Kampala)
 File: UG-Health-82_A3_24June2010_Moroto District Cholera Affected Areas & Cases as of 22 June 2010 (AM)