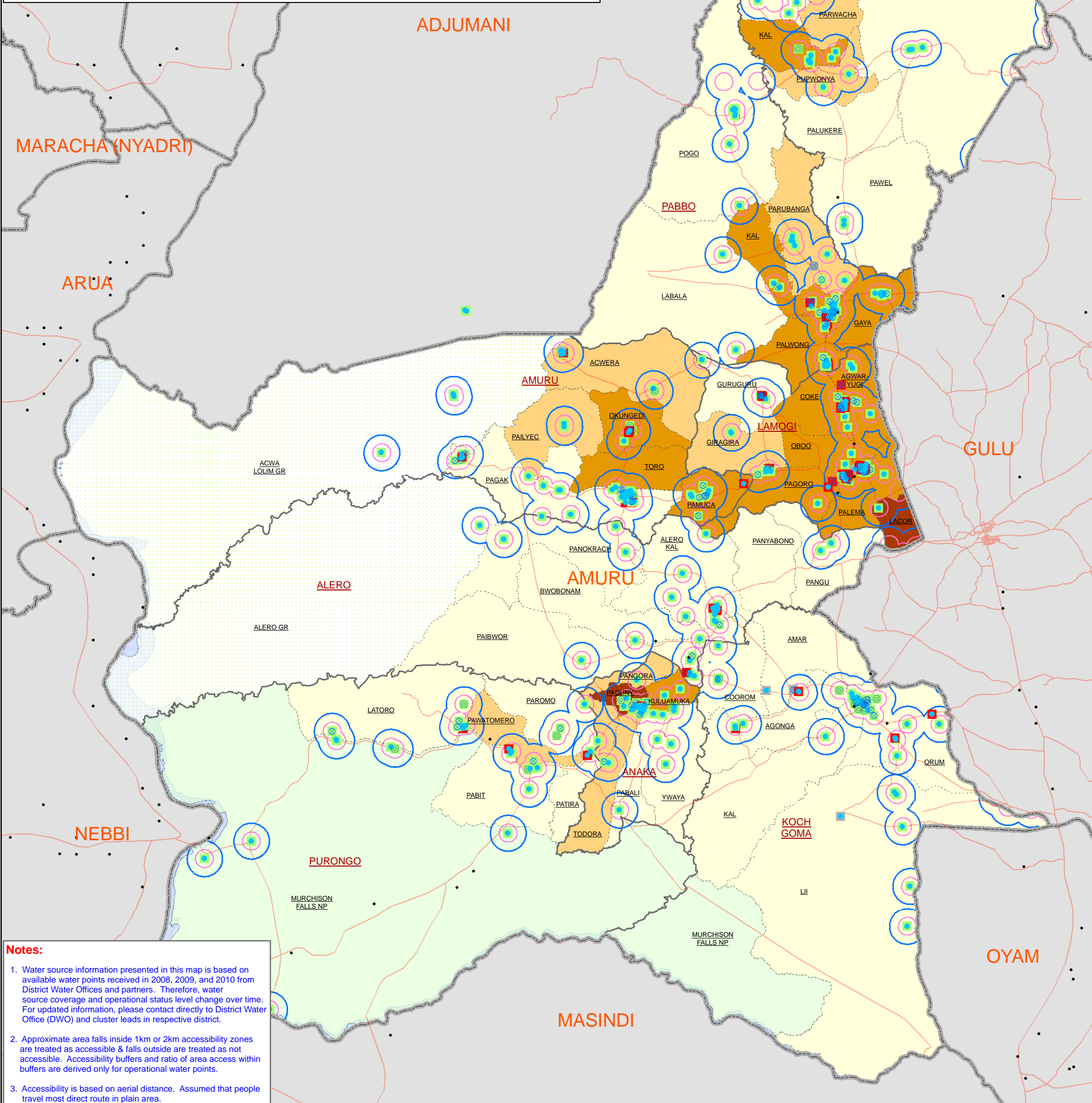


AMURU DISTRICT: WATER SOURCES, ACCESSIBILITY, AND OPERATIONAL STATUS															
S/N	Sub-County	Pop 2010 Projection	*Populated Area (Sq.Km)	Feb 2009					May 2010						
				Accessibility		Water Points by Status			Accessibility		Water Points by Status				
				Area within 1km buffer	Area within 2km buffer	Functional	Not Functional	Unknown Status	Total Water Points	Area within 1km buffer	Area within 2km buffer	Functional	Not Functional	Unknown Status	Total Water Points
1	Alero	16,500	669.83	7.98%	26.28%	34	3	0	37	8.45%	26.28%	34	3	0	37
2	Amuru	36,100	461.87	14.97%	43.55%	57	8	2	67	18.37%	48.99%	57	8	2	67
3	Anaka	15,700	236.20	23.95%	53.22%	33	5	0	38	23.95%	69.19%	33	5	0	38
4	Atiak	33,700	1182.64	5.58%	14.88%	35	0	1	36	5.58%	18.07%	34	0	1	35
5	Koch Goma	10,600	1086.42	5.79%	16.20%	44	4	3	51	6.07%	20.83%	44	4	3	51
6	Lamogi	46,900	372.66	20.24%	43.85%	55	22	1	78	20.66%	48.91%	53	21	1	75
7	Pabbo	52,500	757.50	10.37%	29.87%	59	9	1	69	9.54%	33.19%	57	9	1	67
8	Purongo	8,300	389.43	14.53%	41.97%	26	5		31	16.14%	46.81%	26	5		31
Mapped Water Points				10.06%	27.31%	343	56	8	407	10.51%	31.45%	338	55	8	401
Not Mapped Water Points (No GPS)						2			2			11			11
Amuru Total				220,300	5,156.54	345	56	8	409			349	55	8	412

Notes:
 1. Accessible area calculated based on Total Populated Area (i.e. excluded other area, such as water body, game reserve, range land, national park, etc).
 2. Approximate ratio of accessible populated area within sub-county are derived by using GIS technique. 1km and 2km radius circle is equivalent to 3.14 and 12.57 sq.km area respectively (using formula $A = \text{Pie} * R^2$).



Notes:
 1. Water source information presented in this map is based on available water points received in 2008, 2009, and 2010 from District Water Offices and partners. Therefore, water source coverage and operational status level change over time. For updated information, please contact directly to District Water Office (DWO) and cluster leads in respective district.
 2. Approximate area falls inside 1km or 2km accessibility zones are treated as accessible & falls outside are treated as not accessible. Accessibility buffers and ratio of area access within buffers are derived only for operational water points.
 3. Accessibility is based on aerial distance. Assumed that people travel most direct route in plain area.

Legend

Water Source Type	Water Operational Status	Village	Pop Density per SqKm	Landuse Type
● Boreholes (311 Nos.)	■ Functional (348 Nos.)	● Village	≤ 50	▨ Forest Reserve
⊙ Protected Spring (61 Nos.)	■ Non-Functional (56 Nos.)	— Motorable Road	50 - 100	▨ Game Reserve
⊙ Shallow Well (40 Nos.)	■ Unknown (8 Nos.)	— National Boundary	100 - 200	▨ National Park
○ 2 km Water Access Buffers		— District Boundary	200 - 387.29	▨ Rangeland
○ 1 km Water Access Buffers		— Sub-County Boundary	(on 2010 Projected Pop)	▨ Lakes/Water Body
		— Parish Boundary		

Data Sources:
 Admin Boundaries - UBOS 2006
 Landuse/Demography - UBOS
 Road Network - FAO, District Partners, OCHA
 Villages - Humanitarian Agencies
 Thematic - District Water Office (DWO), May 2010

Map Disclaimer:
 The boundaries and names shown and the designations used on this map do not imply official endorsement or acceptance by the United Nations.

Uganda Overview

Draft

Map Prepare: 28 June, 2010 (IMU/UNOCHA, Kampala)
 File: UG-WASH-31_A3_28June2010_Amuru District Water Sources Operational Status, Population Density & Accessibility.mxd (nk)