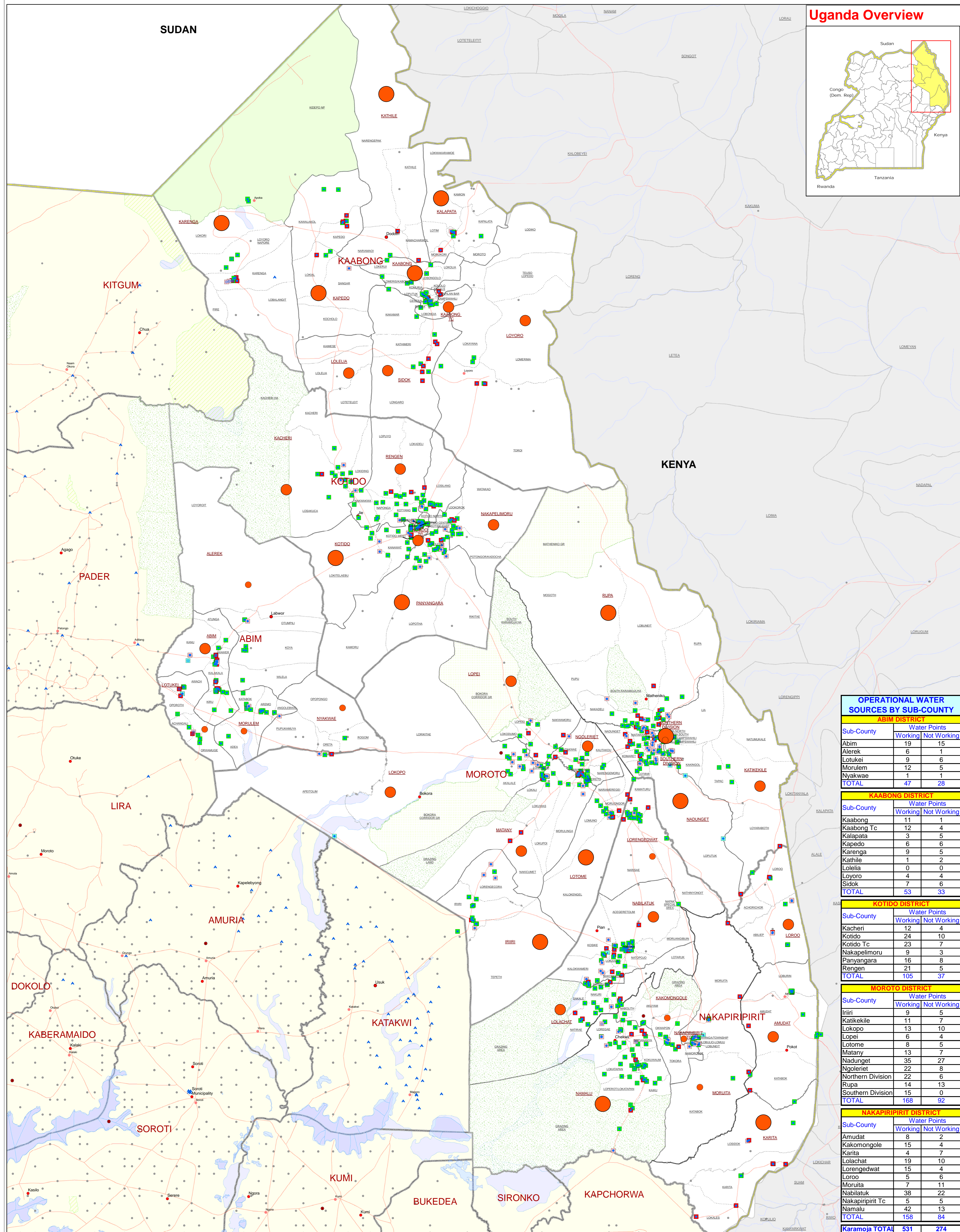
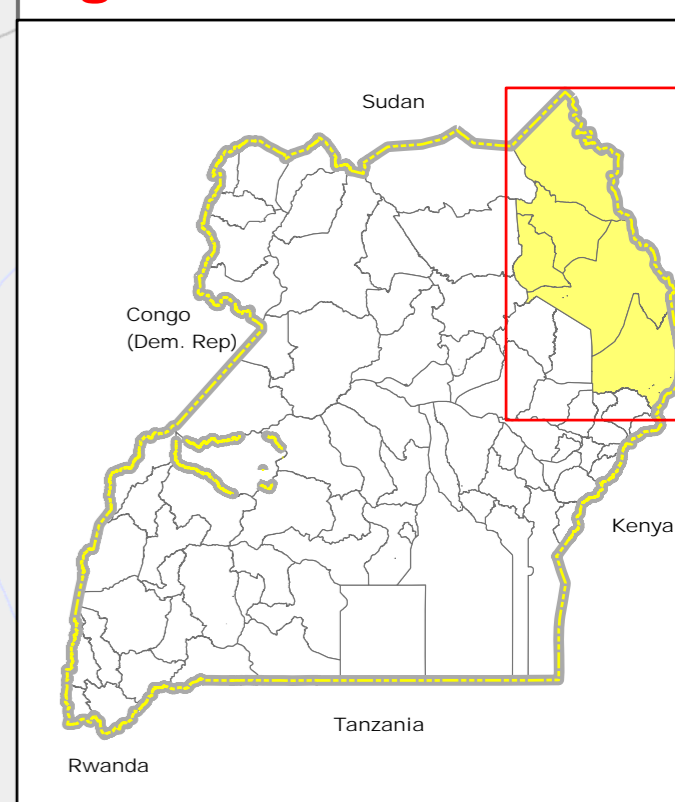


KARAMOJA SUB-REGION: WATER SOURCES BY OPERATIONAL STATUS

Uganda Overview



OPERATIONAL WATER SOURCES BY SUB-COUNTY

ABIM DISTRICT		
Sub-County	Water Points	
	Working	Not Working
Abim	19	15
Alerek	6	1
Lotukei	9	6
Morulem	12	5
Nyakwae	1	1
TOTAL	47	28

KAABONG DISTRICT		
Sub-County	Water Points	
	Working	Not Working
Kaabong	11	1
Kaabong Tc	12	4
Kalapata	3	5
Kapedo	6	6
Karenga	9	5
Kathile	1	2
Lolella	0	0
Loyoro	4	4
Sidok	7	6
TOTAL	53	33

KOTIDO DISTRICT		
Sub-County	Water Points	
	Working	Not Working
Kacheri	12	4
Kotido	24	10
Kotido Tc	23	7
Nakapelimoru	9	3
Panyangara	16	8
Rengen	21	5
TOTAL	105	37

MOROTO DISTRICT		
Sub-County	Water Points	
	Working	Not Working
Iriiri	9	5
Katikekile	11	7
Lokopo	13	10
Lopei	6	4
Lotome	8	5
Matany	13	7
Nadunget	35	27
Ngoleriet	22	8
Northern Division	22	6
Rupa	14	13
Southern Division	15	0
TOTAL	168	92

NAKAPIRIPIT DISTRICT		
Sub-County	Water Points	
	Working	Not Working
Amudat	8	2
Kakomongole	15	4
Karita	4	7
Lolachat	19	10
Lorengedwat	15	4
Loroo	5	6
Moruita	7	11
Nabilatuk	38	22
Nakapiripit Tc	5	5
Namalu	42	13
TOTAL	158	84

Karamoja TOTAL Working: 531, Not Working: 274

Legend

Water Source by Type	Water Source Operational Status	District Admin Centres	Landuse Type	National Boundary	Total Pop (09 Projection)
■ Communal tank (5 Nos.)	■ Operational (531 Nos.)	● District Admin Centres	■ Forest Reserve	▬ National Boundary	● 2400 - 15,000
■ Deep borehole (684 Nos.)	■ Temporarily down (122 Nos.)	● Towns	■ Game Reserve	▬ District Boundary	● 15,001 - 30,000
■ Gfs/Tap (33 Nos.)	■ Abandoned (139 Nos.)	▲ IDP Camp	■ National Park	▬ County Boundary	● 30,001 - 60,300
■ Protected spring (4 No.)	■ Unknown (13 Nos.)	▲ IDP Returnee Site/Village	■ Rangeland	▬ Sub-County Boundary	
■ Shallow well (79 Nos.)	● County Admin Centres	— Motorable Road	■ Water	▬ Parish Boundary	
■ Unknown (7 No.)					

This map is a work in progress. Please contact the IMU/OCHA as soon as possible with any corrections.

Draft

Map Preparation Date: 01 April 2009 (IMU/UNOCHA, Kampala)
 File: UG-WASH-16_A1_01Apr09_Karamoja Sub-Region Water Sources by Operational Status

Data Sources: Admin Boundaries - UBOS 2006, Admin Centres - UBOS 2002/2006, Landuse - UBOS 2006, Road Network - FAO, Towns - Humanitarian Agencies in the field, IDP/Return Sites - Humanitarian Agencies in the field, Village - Humanitarian Agencies in the field, Kenya layers - Regional OCHA Office, Kenya Thematic - District Water Office/District Partners, Oct 2008

Map Disclaimer: The boundaries and names shown and the designations used on this map do not imply official endorsement or acceptance by the United Nations.