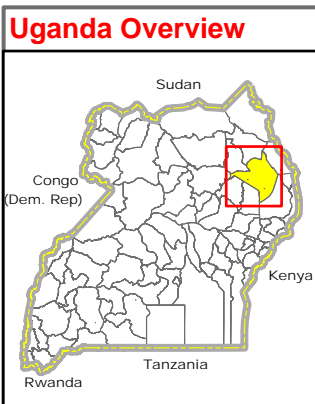
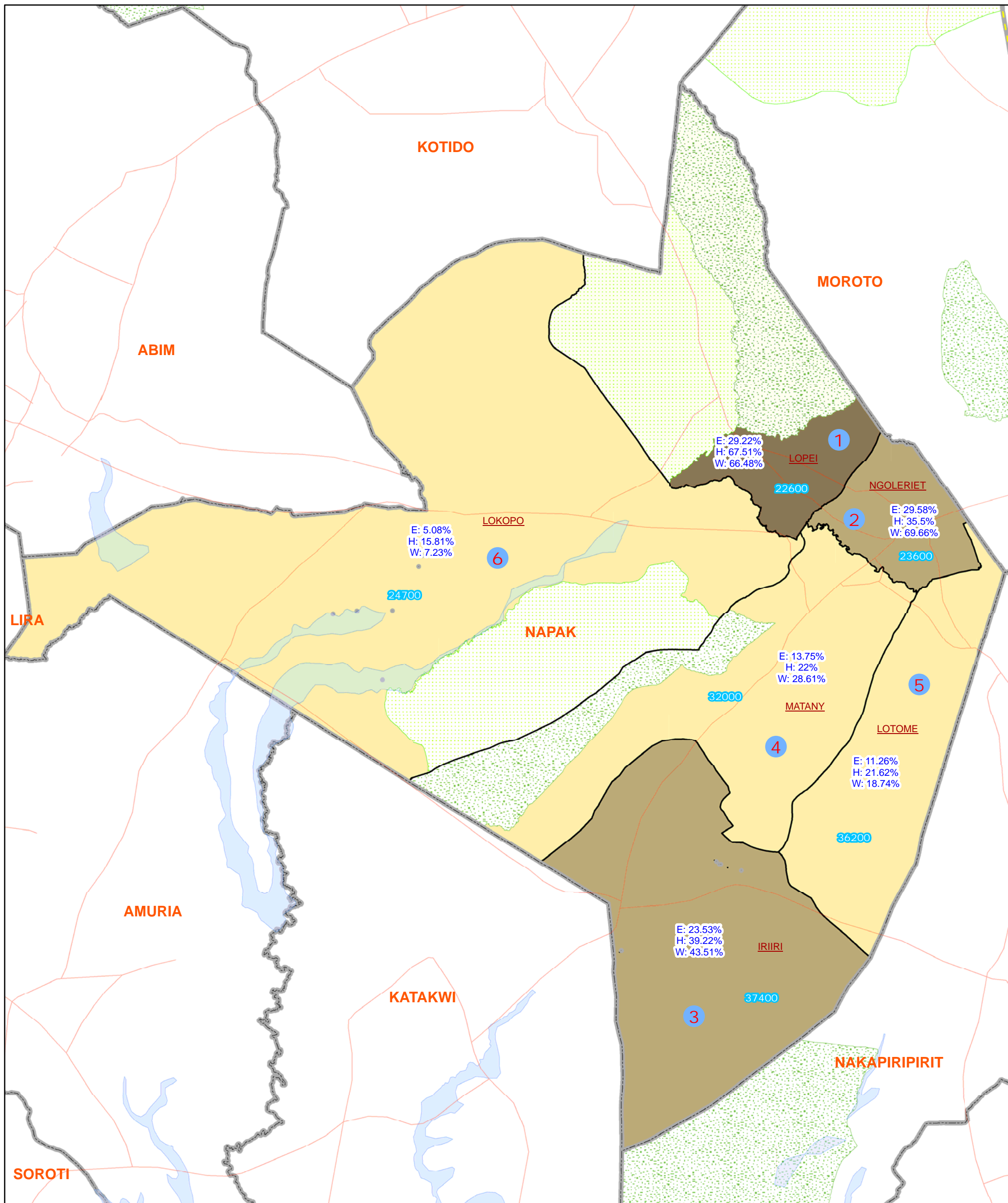


NAPAK DISTRICT

Composite Basic Service Index Rank in Sub-County (Aug 2010)



Legend

	National Boundary		Forest Reserve		<=25%
	District Boundary		Game Reserve		25 - 50%
	Sub-County Boundary		National Park		50 - 75%
	Motorable Road		Rangeland		75 - 100%
	Projected Population 2010				
	E: -> Education				
	H: -> Health				
	W: -> Water				

Composite Basic Service Accessibility Index Rank (within District)

Notes:

- Ratio of populated area covered by functional basic services (education, health, water points) within a sub-county is calculated by using national standards (2.5km for education, 5km for health, and 1-2 km for water points). Approximate area falls inside those zones are treated as accessible & falls outside are treated as not accessible. Accessibility is based on aerial distance - assumed that people travel most direct route in plain area.
- Service access index is calculated using index formula -> (X-min)/(max-min). Composite index is average of 3 services (education, health, and water) in sub-county. Coverage and accessibility change over time. For updated information, please contact the respective District Office/Cluster Leads directly.

Data Sources:

- Admin Boundaries - UBOS 2006
- Demography - UBOS
- Landuse - UBOS 2006
- Road Network - FAO, District Partners, Ocha
- Thematic - Calculated based on available service centers (education, health, water points) from district office/partners as of Aug 2010

Draft

Map Prepare Date: 1 Sep 2010 (IMU/UNOCHA)

File: UG-Basic Service-19_A3_1Sep2010_Napak District: Composite Basic Service Index Rank in Sub-County.mdx(nk)

This map is a work in progress. Please contact the IMU/Ocha as soon as possible with any corrections.

Map Disclaimer:
 The boundaries and names shown and the designations used on this map do not imply official endorsement or acceptance by the United Nations.