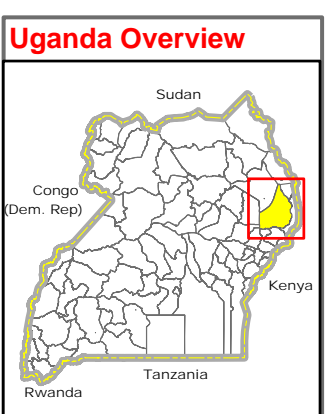
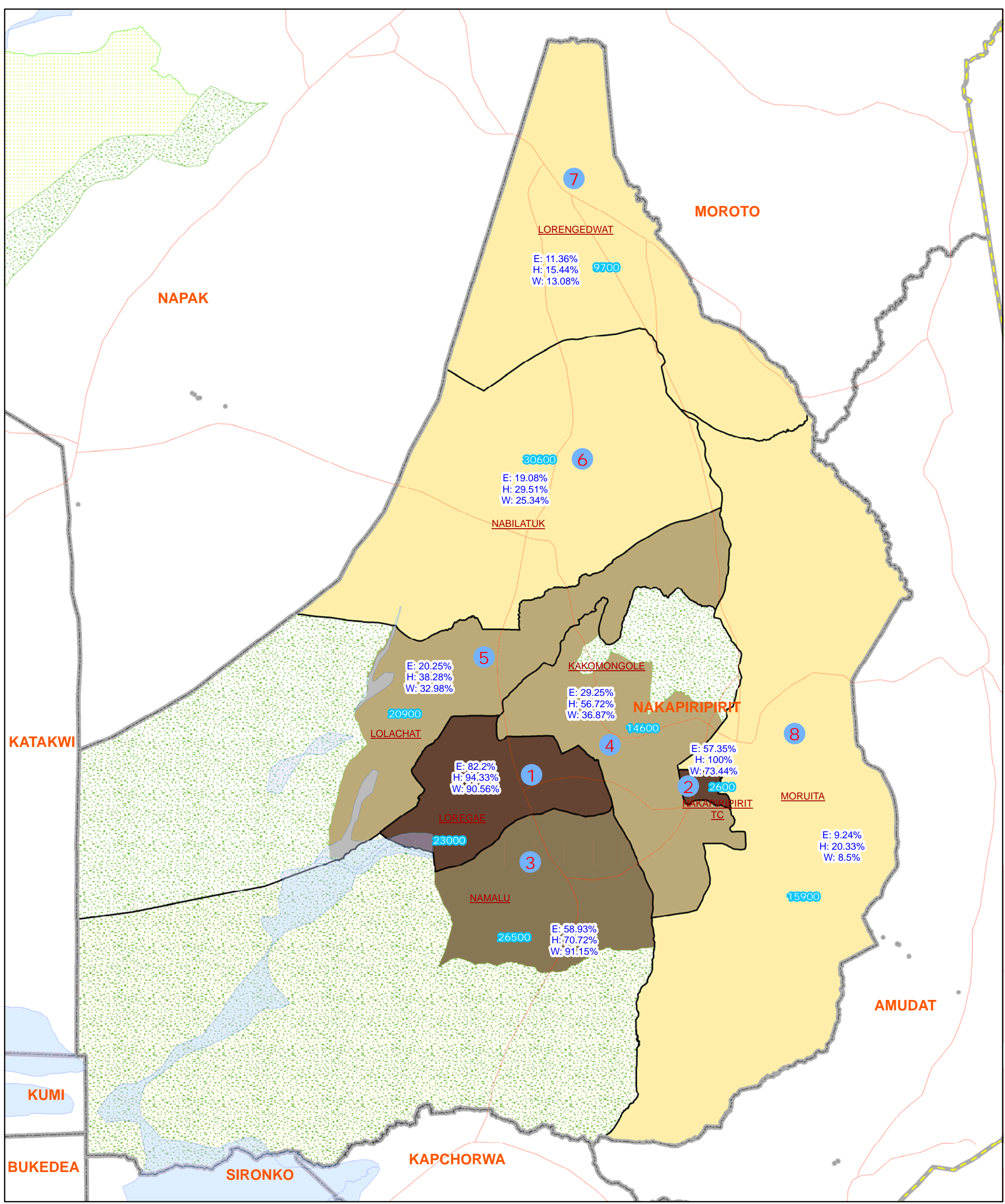


# NAKAPIRIPIT DISTRICT

## Composite Basic Service Index Rank in Sub-County (Aug 2010)



### Legend

	National Boundary		Forest Reserve		<=25%
	District Boundary		Game Reserve		25 - 50%
	Sub-County Boundary		National Park		50 - 75%
	Motorable Road		Rangeland		75 - 100%
	Projected Population 2010				
	E: -> Education				
	H: -> Health				
	W: -> Water				

**Composite Basic Service Accessibility Index Rank (within District)**

### Notes:

- Ratio of populated area covered by functional basic services (education, health, water points) within a sub-county is calculated by using national standards (2.5km for education, 5km for health, and 1-2 km for water points). Approximate area falls inside those zones are treated as accessible & falls outside are treated as not accessible. Accessibility is based on aerial distance - assumed that people travel most direct route in plain area.
- Service access index is calculated using index formula -> (X-min)/(max-min). Composite index is average of 3 services (education, health, and water) in sub-county. Coverage and accessibility change over time. For updated information, please contact the respective District Office/Cluster Leads directly.

### Data Sources:

- Admin Boundaries - UBOS 2006
- Demography - UBOS
- Landuse - UBOS 2006
- Road Network - FAO, District Partners, Ocha
- Thematic - Calculated based on available service centers (education, health, water points) from district office/partners as of Aug 2010

**Draft**

Map Prepare Date: 1 Sep 2010 (IMU/UNOCHA)

File: UG-Basic Service-20\_A3\_1Sep2010\_Nakapiripit District: Composite Basic Service Index Rank in Sub-County.mxd(nk)

**Map Disclaimer:**  
 This map is a work in progress. Please contact the IMU/Ocha as soon as possible with any corrections.  
 The boundaries and names shown and the designations used on this map do not imply official endorsement or acceptance by the United Nations.