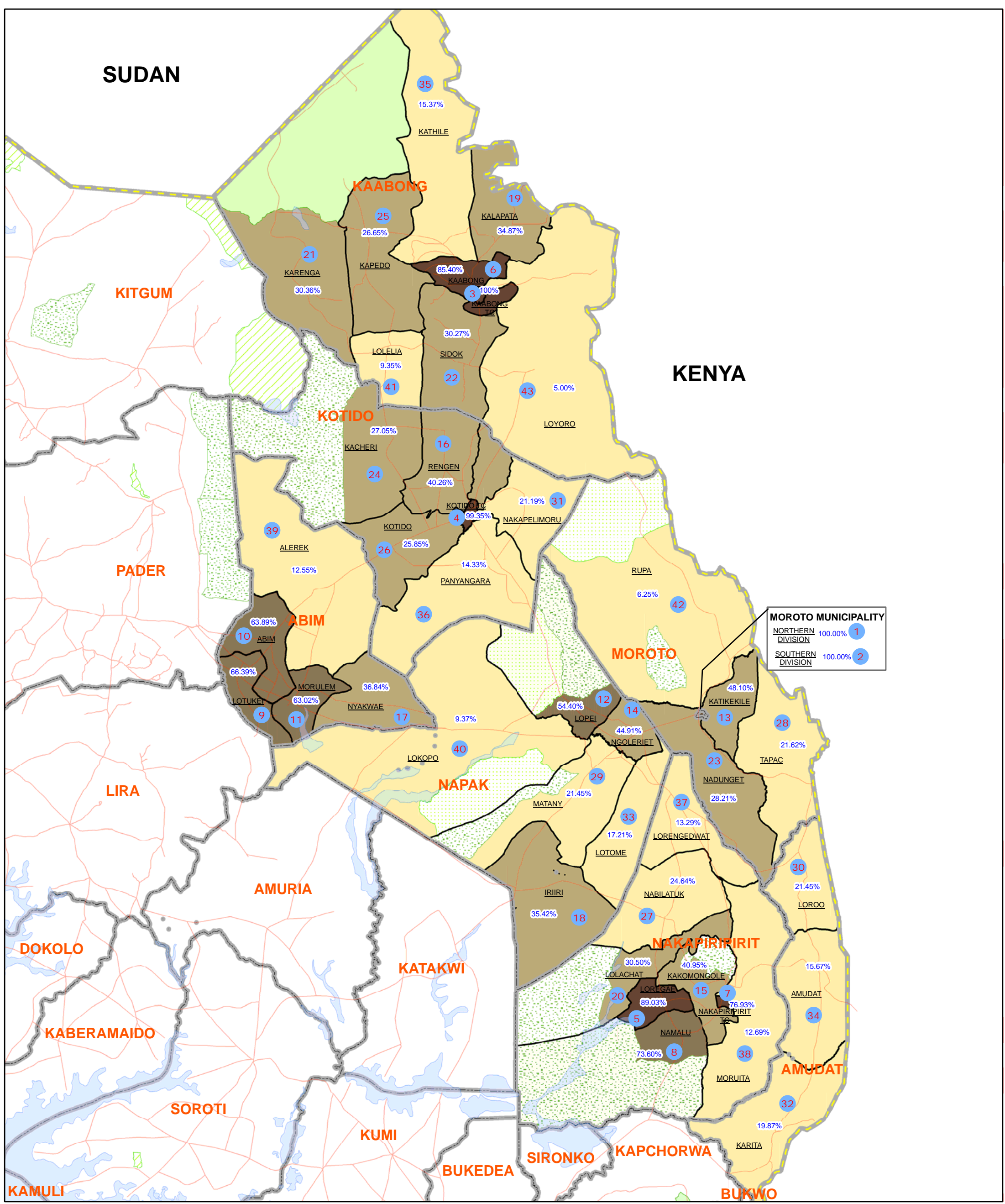


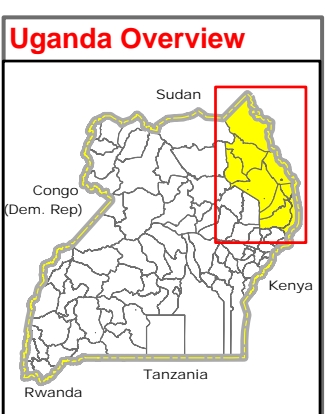
KARAMOJA SUB-REGION

Composite Basic Service Index Rank in Sub-County (Aug 2010)



MOROTO MUNICIPALITY

NORTHERN DIVISION	100.00%	1
SOUTHERN DIVISION	100.00%	2



Legend

- National Boundary
- District Boundary
- Sub-County Boundary
- Motorable Road

Landuse Type

- Forest Reserve
- Game Reserve
- National Park
- Rangeland

Composite Access

- <=25%
- 25 - 50%
- 50 - 75%
- 75 - 100%

Composite Basic Service Accessibility Index Rank (within District)

Rank 1 = Highest access to basic services
 Rank 43 = Lowest access to basic services

00% -> Composite Basic Service Rate

Notes:

- Ratio of populated area covered by functional basic services (education, health, water points) within a sub-county is calculated by using national standards (2.5km for education, 5km for health, and 1-2 km for water points). Approximate area falls inside those zones are treated as accessible & fails outside are treated as not accessible. Accessibility is based on aerial distance - assumed that people travel most direct route in plain area.
- Service access index is calculated using index formula -> (X-min)/(max-min). Composite index is average of 3 services (education, health, and water) in sub-county. Coverage and accessibility change over time. For updated information, please contact the respective District Office/Cluster Leads directly.

Data Sources:

- Admin Boundaries - UBOS 2006
- Demography - UBOS
- Landuse - UBOS 2006
- Road Network - FAO, District Partners, Ocha
- Thematic - Calculated based on available service centers (education, health, water points) from district office/partners as of Aug 2010

Map Disclaimer:

The boundaries and names shown and the designations used on this map do not imply official endorsement or acceptance by the United Nations.

Draft

Map Prepare Date: 1 Sep 2010 (IMU/UNOCHA)

File: UG-Basic Service-22_A3_1Sep2010_Karamoja Sub-region: Composite Basic Service Accessibility Index Rank in Sub-County.mxd(nk)