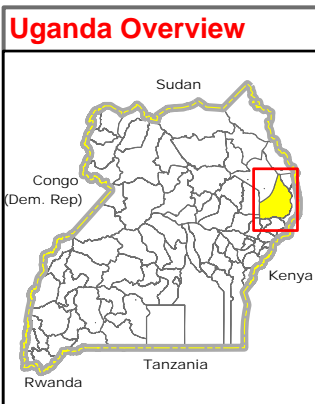
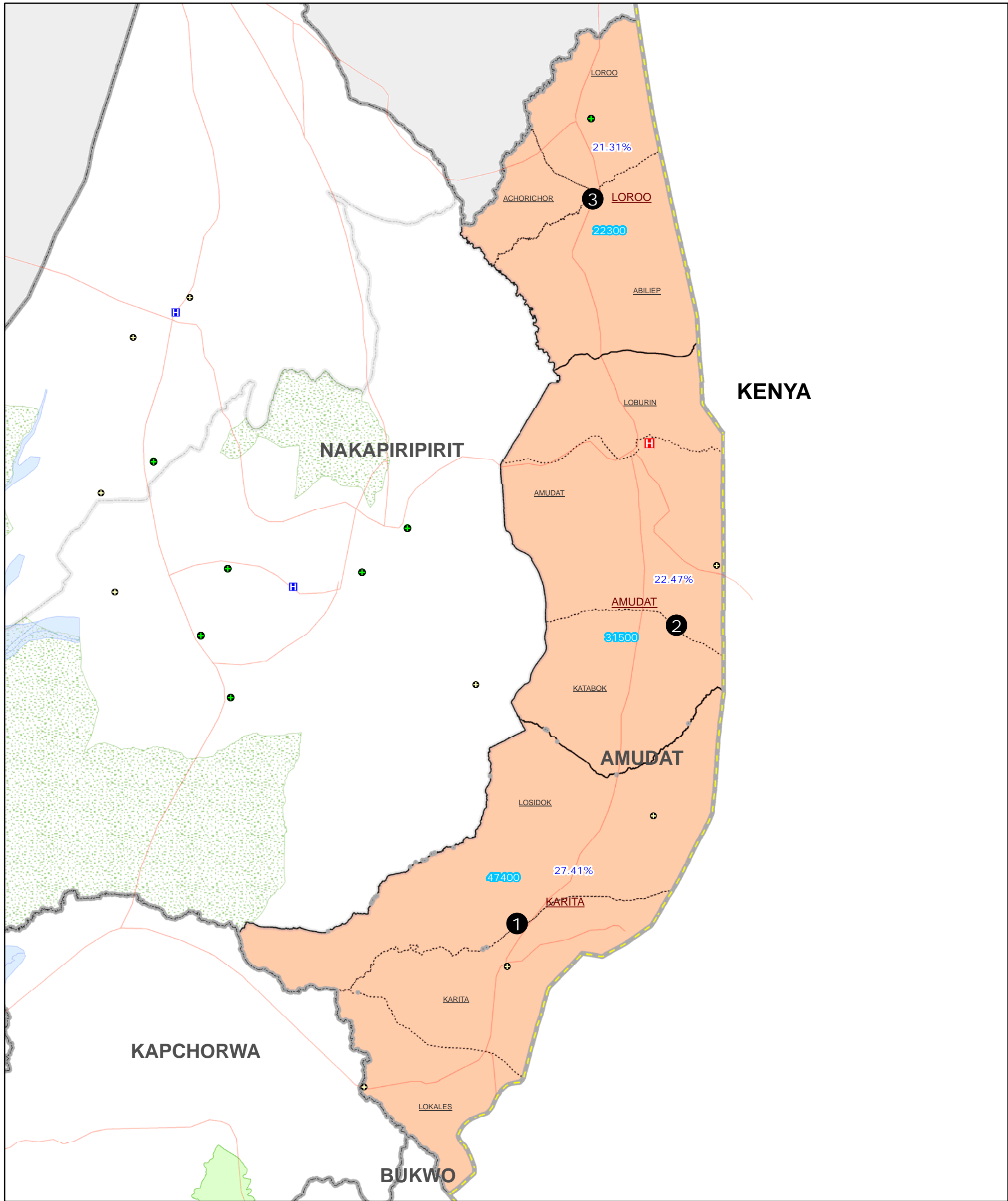


Ratio of Populated Area Covered by Health Facilities (Index Rank) in Sub-County (Aug 2010)



Legend

Health Centers by Type	Landuse Type	%Covered by Health Facilities	Populated Area Within 5km access distance (Nat Std)
<ul style="list-style-type: none"> + Clinic () + HC-II (4 Nos.) + HC-III (1 No.) H HC-IV () H Hospital (1 No.) X Non-Functional () — Motorable Road 	<ul style="list-style-type: none"> ▭ Forest Reserve ▭ Game Reserve ▭ National Park ▭ Rangeland ▭ National Boundary ▭ District Boundary ▭ Sub-County Boundary ▭ Parish Boundary 	<ul style="list-style-type: none"> ▭ 75 - 100% ▭ 50 - 75% ▭ 20 - 50% ▭ <=20% ??% Ratio of Cover 9999 Projected Population 2010 ? Health Service Accessibility Index Rank 	

Notes:

- Ratio of populated area covered by operational Health Facilities within a sub-county is calculated by using national standards (5 km radius distance which is equivalent to 78.57 sq.km area using formula $A = \text{Pie} * R * R$). Approximate area falls inside 5km zones are treated as accessible & falls outside are treated as not accessible. Accessibility is based on aerial distance. Assumed that people travel most direct route in plain area.
- Health coverage information presented in this map is based on available locations of operational Health Centres from the District. It should be noted that ratio of coverage change over time. For updated health information, please contact the respective DHO & Health Cluster Leads directly.

Data Sources:

- Admin Boundaries - UBOS 2006
- Demography - UBOS
- Landuse - UBOS 2006
- Road Network - FAO, District Partners, Ocha
- Health Centres - Amudat DHO, 2009/10
- Re-verified and edited as of Aug 2010

Map Disclaimer:

The boundaries and names shown and the designations used on this map do not imply official endorsement or acceptance by the United Nations.

Draft

Map Prepare Date: 27 Aug 2010 (IMU/UNOCHA)

File: UG-Health-106_A3_27Aug2010_Amudat District: Ratio of Populated Area Covered by Health Facilities in Sub-County.mxd (nk)