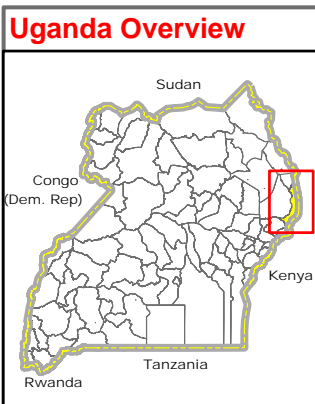
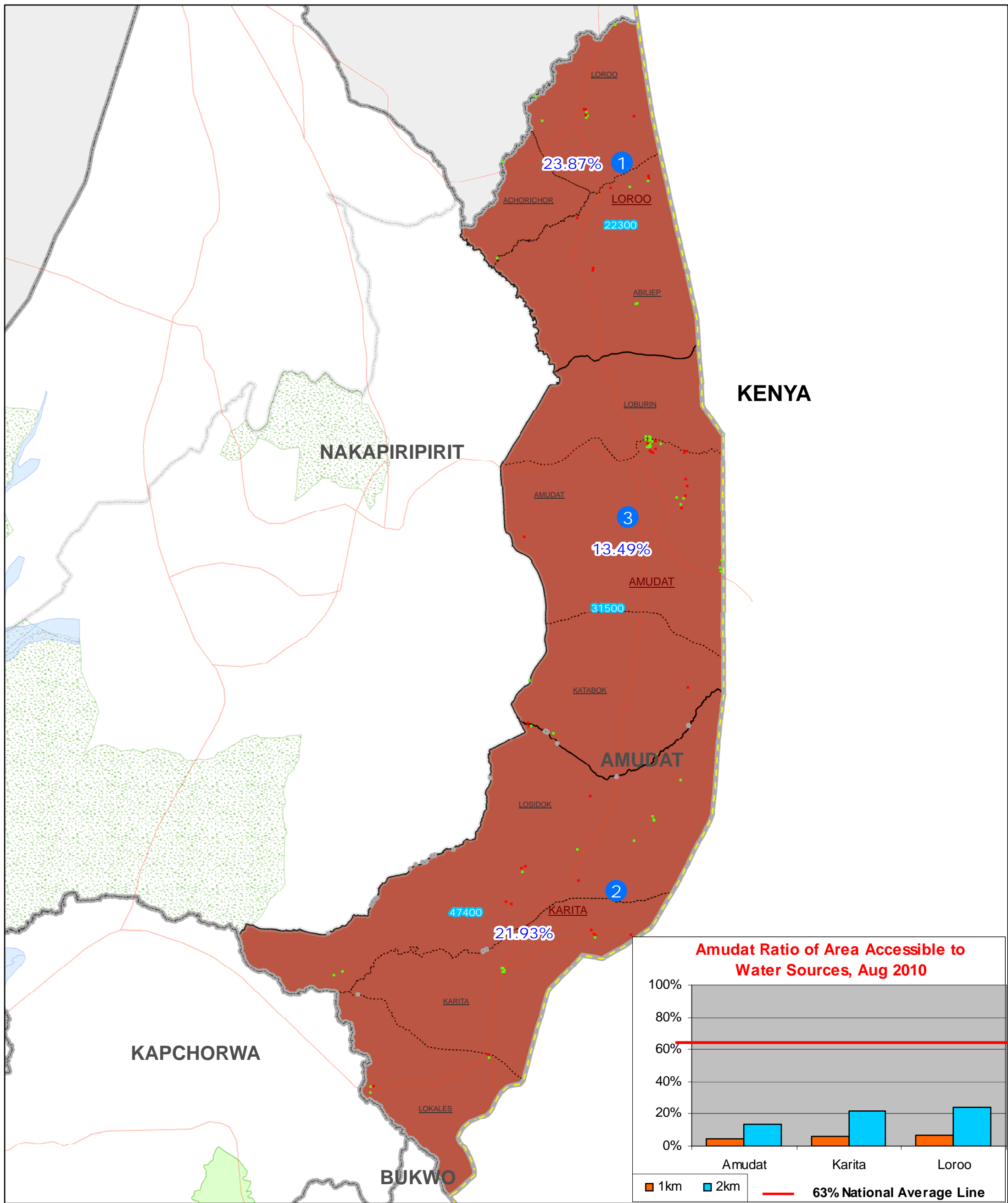


Ratio of Populated Area Covered by Water (Index Rank) in Sub-County (Aug 2010)



Legend

Water Operational Status

- Functional (57 Nos.)
- Non-Functional (42 Nos.)

Area (2km) Access to Water

- 80 - 100% Above Nat Avg (63%)
- 63 - 80%
- 30 - 63% Below Nat Avg (63%)
- <=30%

Landuse Type

- National Boundary
- District Boundary
- Sub-County Boundary
- Parish Boundary
- Motorable Road
- Forest Reserve
- Game Reserve
- National Park
- Rangeland

Ratio of Cover (??%)

Projected Population 2010 (9999)

Water Service Accessibility Index Rank (?)

Notes:

- Ratio of populated area covered by operational Water Points within a sub-county is calculated by using national standards (1-2 km radius distance). Accessibility is based on aerial distance - assumed that people travel most direct route in plain area.
- Water Points information presented in this map is based on available locations of operational water points collected from the DWO and partners. Please note that ratio of coverage change over time. For updated information, please contact the respective DWO & Wash Cluster Leads directly.

Data Sources:

- Admin Boundaries - UBOS 2006
- Demography - UBOS
- Landuse - UBOS 2006
- Road Network - FAO, District Partners, Ocha
- Water Points - IRC/FAO/DWO/Partners 2009/10
- Re-verified and edited as of Aug 2010

Map Disclaimer:

The boundaries and names shown and the designations used on this map do not imply official endorsement or acceptance by the United Nations.

Map Prepare Date: 31 Aug 2010 (IMU/UNOCHA)

File: UG-WASH-51_A3_31Aug2010_Amudat District: Ratio of Populated Area Covered by Water in Sub-County.mxd (nk)