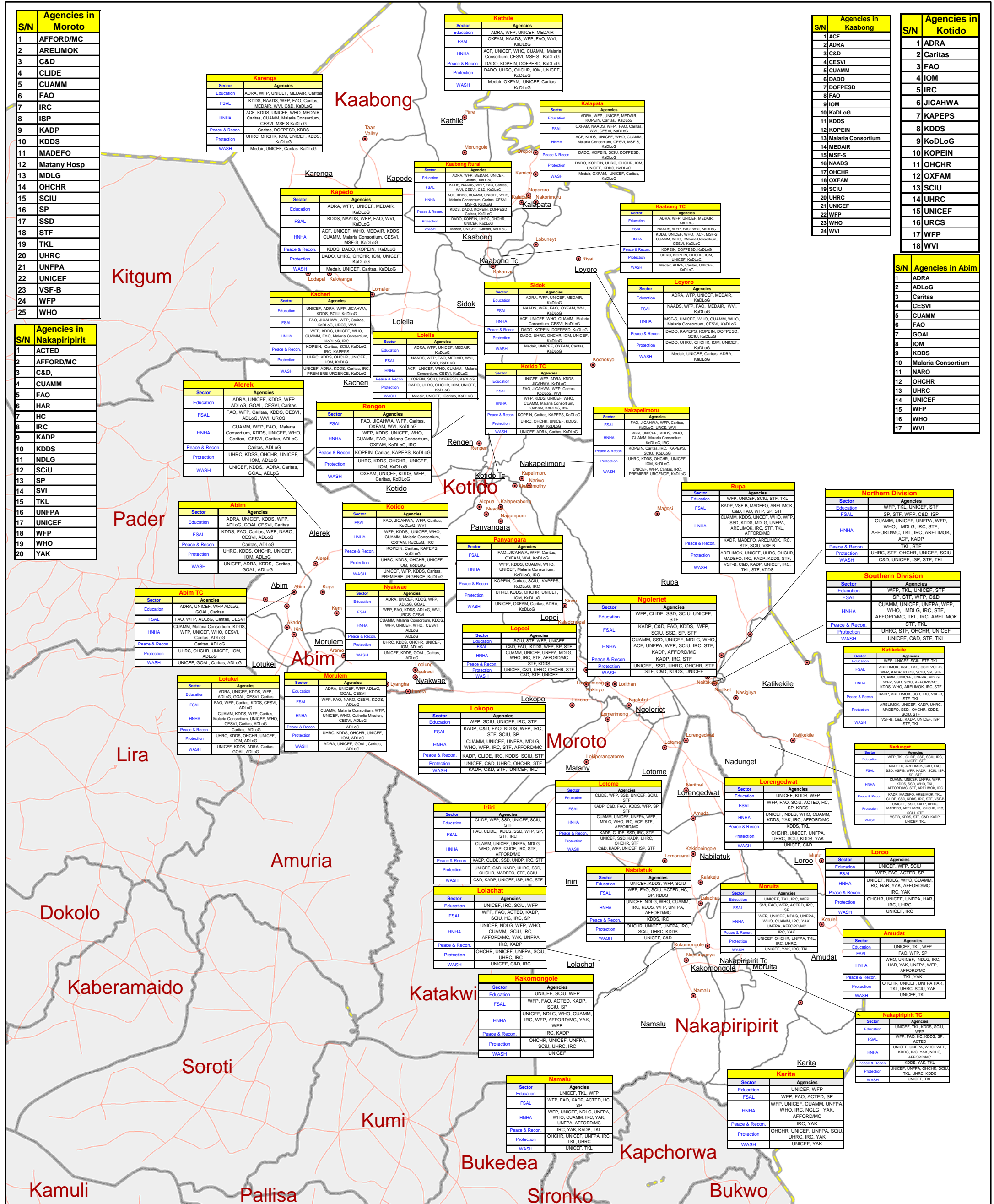


Karamoja Region: Humanitarian Presence by Sector and Sub-County (March 2009)



Legend

- Villages
- Motorable Road
- Sub-County
- District
- National Boundary

Sector Information

Education	Education
FSAL	Food Security & Agricultural Livelihoods
HNHA	Health, Nutrition and HIV/AIDS
Peace & Re	Peace & Reconciliation
Protection	Protection (Human Rights, Rule of Law, Child, GBV)
WASH	Water, Sanitation & Hygiene

W3 information is updated by Ocha field offices in Moroto & Kitido based on inputs received from organizations and in collaboration with local government of respective district.

Data Sources:
 Admin Boundaries - UBOS 2006
 Abim Boundaries - UBOS 2006
 Road Network - FAO
 Village locations - Humanitarian Agencies in Karamoja Region
 Thematic - Ocha, Moroto & Kitido - March 2009

This map is a work in progress. Please contact the IMU/Ocha as soon as possible with any corrections.



Map Prepare Date: 06 April 09 (IMU Kampala/OCHA)
 File: UG-KARAMOJA-W3-20_A3_25Sep08_Karamoja Region Humanitarian Presence by Sector & Sub-County.mxd

Draft

Map Disclaimer:
 The boundaries and names shown and the designations used on this map do not imply official endorsement or acceptance by the United Nations.