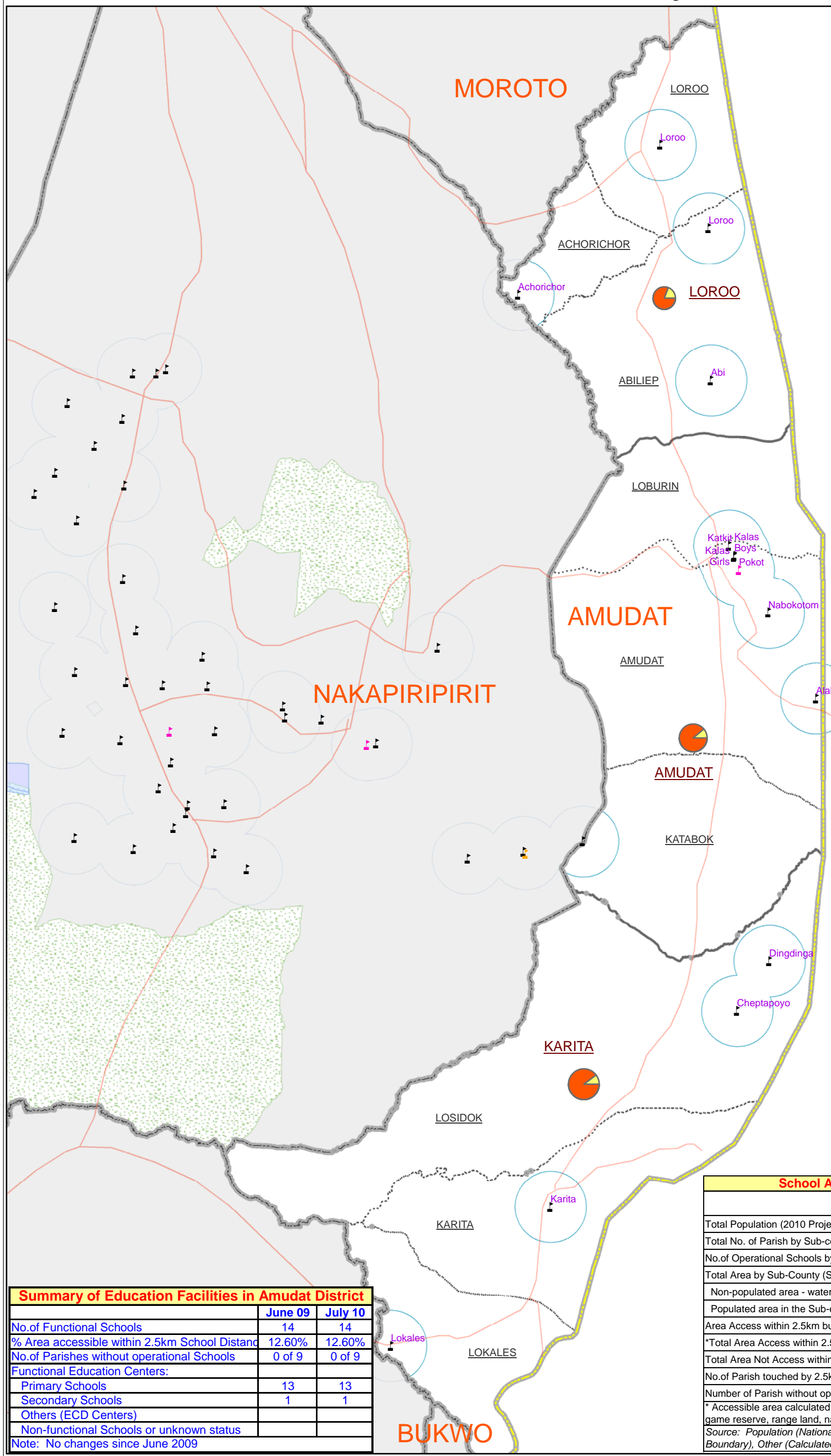


National Standard for Primary Schools	
School Access	Minimum one primary school per Parish
Distance to School	Maximum 2.5km
Teacher/Pupil Ratio	1:55 (Qualified teacher)
Female Teacher	Atleast one per school
Teacher Accomodation	Minimum 4 semi-permanent house with separate housing for female
Class room/Pupil Ratio	1:55
Desk/Pupil Ratio	1:3
Textbook/Pupil Ratio	1:3
Stance/Pupil Ratio	1:40 (separate for boys & girls, with hand washing facilities)
Drinking water access	Maximum 200 metres
Playground	Save for boys and girls
Food	Minimum 1 meal per day at school
Inspector/Schools Ratio	1:40

Source: Gulu District



KENYA

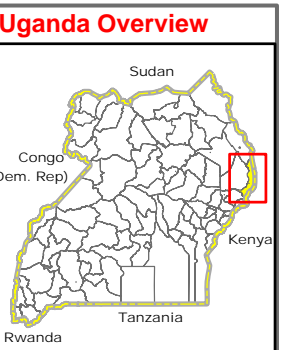
BUKWO

Summary of Education Facilities in Amudat District		
	June 09	July 10
No. of Functional Schools	14	14
% Area accessible within 2.5km School Distance	12.60%	12.60%
No. of Parishes without operational Schools	0 of 9	0 of 9
Functional Education Centers:		
Primary Schools	13	13
Secondary Schools	1	1
Others (ECD Centers)		
Non-functional Schools or unknown status		

Note: No changes since June 2009

School Accessibility by Sub-County in Amudat District				
	Total	Amudat	Karita	Loroo
Total Population (2010 Projection)	101100	31500	47300	22300
Total No. of Parish by Sub-county	9	3	3	3
No. of Operational Schools by Sub-County	14	6	4	4
Total Area by Sub-County (Sq.Km.)	1615.9	559.3	687.8	368.7
Non-populated area - water body/game reserve/nat park (Sq.Km.)	0.0	0.0	0.0	0.0
Populated area in the Sub-county (Sq.Km.)	1615.9	559.3	687.8	368.7
Area Access within 2.5km buffer (%)	12.6%	11.1%	10.3%	19.2%
*Total Area Access within 2.5km buffer (Sq.km.)	203.3	61.9	70.7	70.7
Total Area Not Access within 2.5km in the sub-county (Sq.Km.)	1412.6	497.5	617.1	298.0
No. of Parish touched by 2.5km School Access buffers	9	3	3	3
Number of Parish without operational Schools	0 of 9	0 of 3	0 of 3	0 of 3

* Accessible area calculated based on Total Populated Area (i.e. excluded other area, such as water body, game reserve, range land, national park, etc)
 Source: Population (National Population Projection 2010, UBOS), No. of Parish (Based on UBOS Boundary), Other (Calculated using GIS Technique)



Legend

Schools by Type

- Primary (13 Nos.)
- Secondary (1 No.)
- Other Tech ()

Landuse Type

- Forest Reserve
- Game Reserve
- National Park
- Rangeland
- Water Body/Lakes

Boundary Types

- National Boundary
- District Boundary
- Sub-County Boundary
- Parish Boundary
- Motorable Road

Pie (Ratio of Populated Area)

- Access
- No Access

Notes:

- Approximate ratio of access area within Sub-County are derived by using GIS technique. 2.5km radius circle is equivalent to 19.643 sq.km area (using formula $A = \text{Pie} \cdot R^2$).
- Approximate area falls inside 2.5km radius zones are treated as accessible & falls outside are treated as not accessible.
- Accessibility is based on aerial distance. Assumed that students travel most direct route in plain area. Pie size is graduated by total populated area of Sub-County.
- Accessibility is based on available location of Education centres from the District Education Office (DEO). Therefore, accessibility change over time, please contact directly to DEO for more info.

Data Sources:

- Admin Boundaries - UBOS 2006
- Landuse - UBOS 2006
- Road Network - FAO, District Partners, UNOCHA
- Thematic - Nakapiripit/Amudat DEO, June 2009
- (Re-Verified as of July 2010)

Map Disclaimer:

The boundaries and names shown and the designations used on this map do not imply official endorsement or acceptance by the United Nations.

Draft

Map Prepare Date: 03 Aug 2010 (IMU/UNOCHA, Kampala)
 File: UG-Education-26_A3_03Aug2010_Amudat District Education Accessibility in Sub-County.mdx