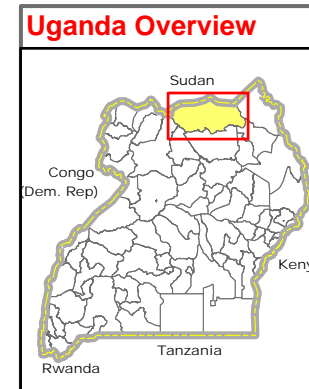
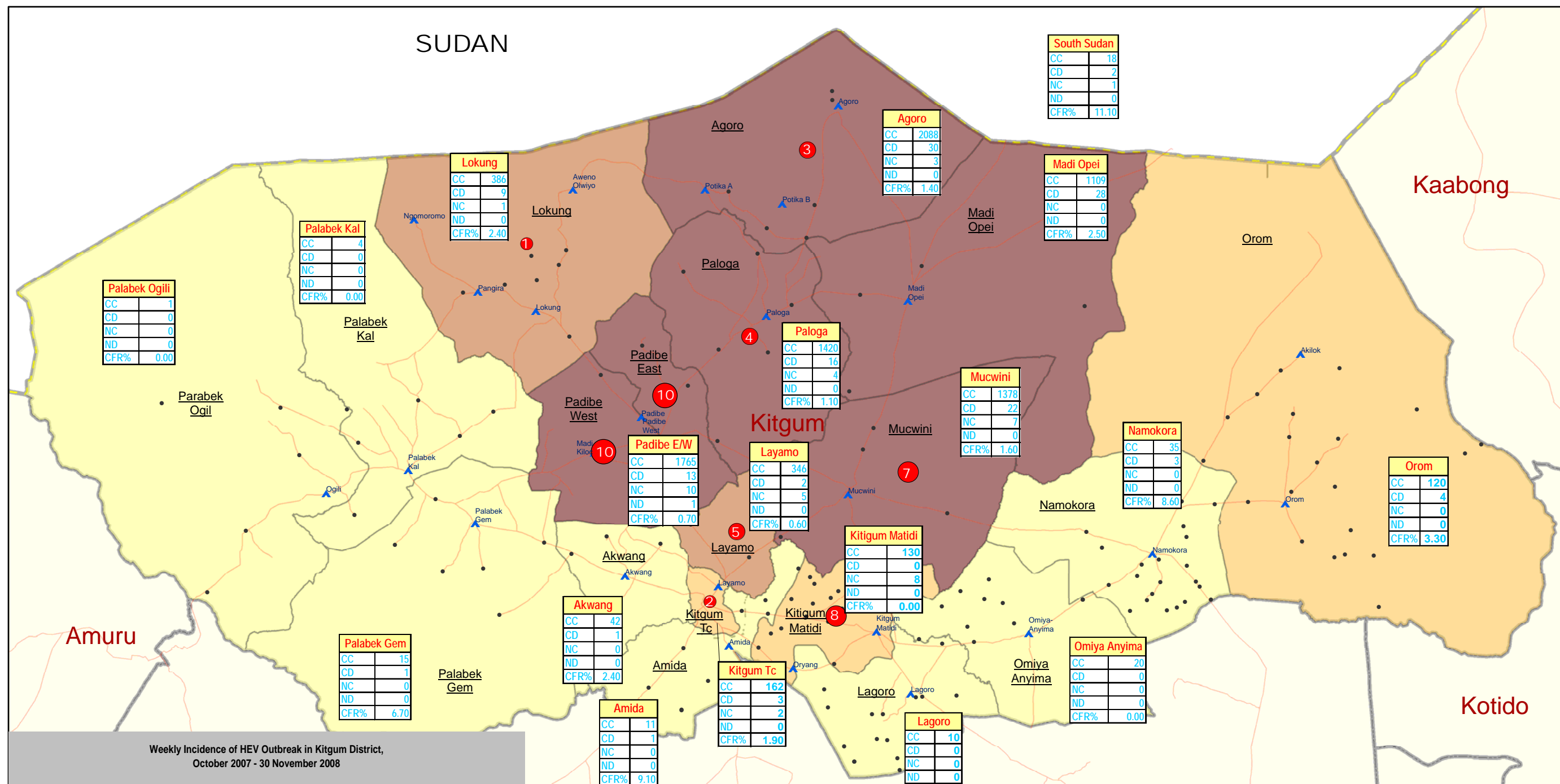


# Kitgum District: Hepatitis E Cases by Sub-County

(Week 48: as of 01 December 2008)



### Legend

- ▲ IDP Camp
- IDP Returnee Site
- Motorable Road

### Hep E - New Cases (Week 48)

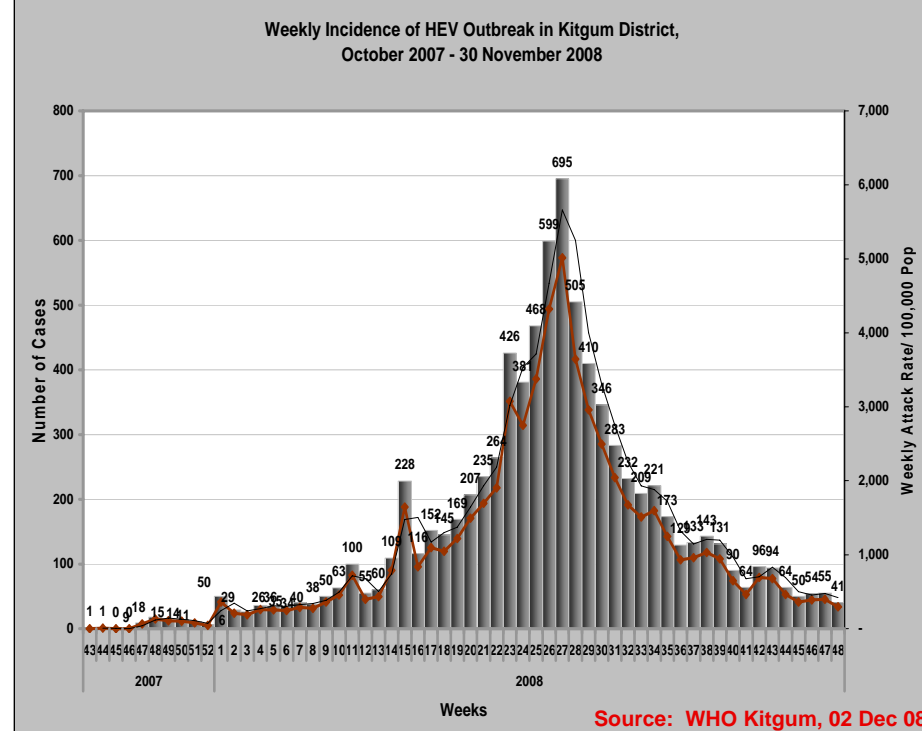
- 1 - 2
- 3 - 5
- 6 - 8
- 9 - 10

### Hep E - Commulative Cases

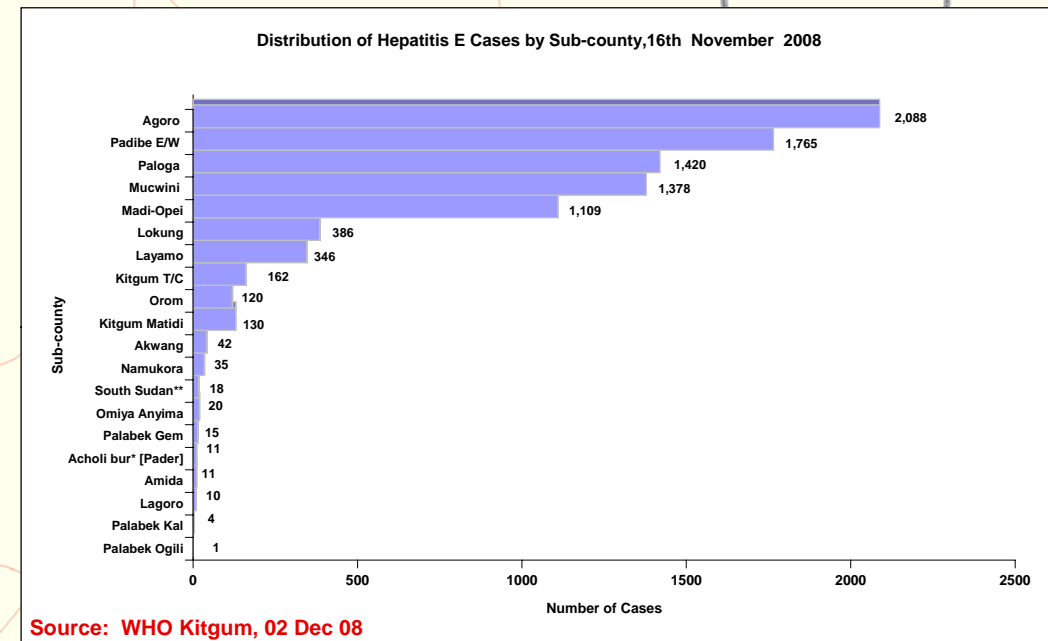
- 1 - 100
- 101 - 300
- 301 - 1000
- 1001 - 2088

- Sub-County Boundary
- District Boundary
- National Boundary

**Note:**  
 Cumulative cases and deaths are recorded since the onset of the epidemic on 25 Oct 2007. New cases are registered in week 48.



Hep E Information		Total
CC	Comulative Cases	9,071
CD	Comulative Deaths	136
NC	New Cases (week 48)	41
ND	New Deaths (week 48)	1
CFR (%)		1.5



Data Sources:  
 Admin Boundaries - UBOS 2006  
 Road Network - FAO  
 IDP Camp/Settlements - Humanitarian Agencies in Kitgum Districts.  
 Thematic - WHO Kitgum - 02 Dec 2008

Hep E cases are updated by WHO office in Kitgum. Please contact WHO-Kitgum directly for details information.

**This map is a work in progress. Please contact the IMU/Ocha as soon as possible with any corrections.**

Map Disclaimer:  
 The boundaries and names shown and the designations used on this map do not imply official endorsement or acceptance by the United Nations.

**Draft**

Map Prepare Date: 02 Dec 08 (IMU Kampala/OCHA)  
 File: UG-Health-11\_A3\_02Dec08\_Kitgum  
 District Hepatitis E Cases by Sub-County - 1 Dec 2008.mdx