

# **KOTIDO DISTRICT: FIELD ATLAS**

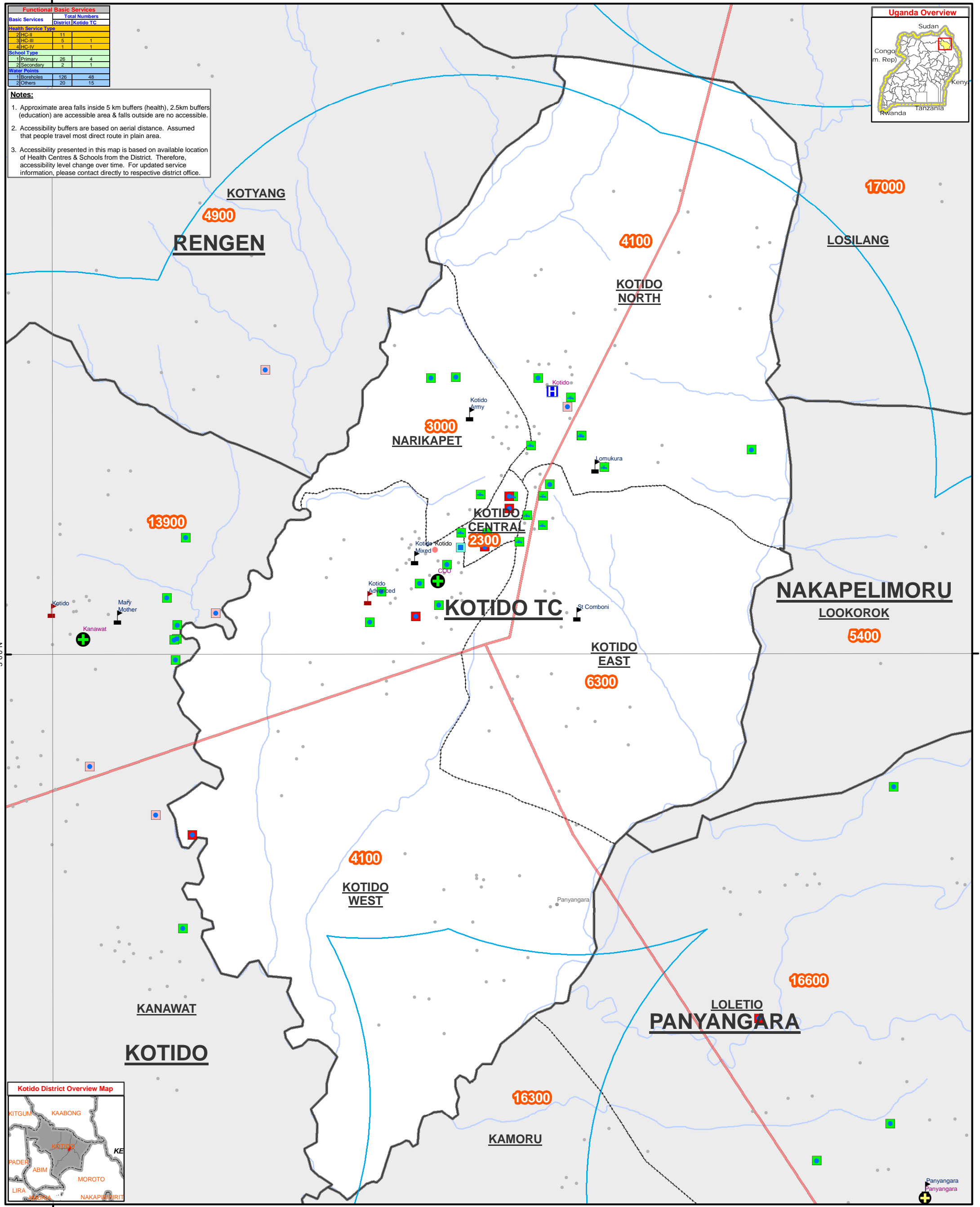
(Basic Service Accessibility)

## Sub-County Maps:

- |              |                 |
|--------------|-----------------|
| 1. Kotido TC | 6. Nakapelimoru |
| 2. Kotido    | 7. Panyangara   |
| 3. Rengen    | 8. Kacheri      |

INFORMATION MANAGEMENT UNIT  
UNOCHA, UGANDA

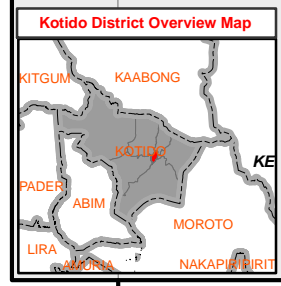
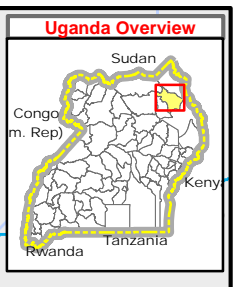
August 2009



Functional Basic Services		
Basic Services	District	Kotido TC
<b>Health Service Type</b>		
2(HC-I)	11	1
3(HC-III)	5	1
4(HC-IV)	1	1
<b>School Type</b>		
1(Primary)	26	4
2(Secondary)	2	1
<b>Water Points</b>		
1(Boreholes)	126	48
2(Other)	20	15

**Notes:**

1. Approximate area falls inside 5 km buffers (health), 2.5km buffers (education) are accessible area & falls outside are no accessible.
2. Accessibility buffers are based on aerial distance. Assumed that people travel most direct route in plain area.
3. Accessibility presented in this map is based on available location of Health Centres & Schools from the District. Therefore, accessibility level change over time. For updated service information, please contact directly to respective district office.



<p><b>Legend</b></p> <ul style="list-style-type: none"> <li>District Admin Centres</li> <li>County Admin Centres</li> <li>Towns</li> <li>IDP Camp</li> <li>IDP Returnee Site</li> <li>Settlements</li> <li>Motorable Road</li> <li>Drainage</li> <li>National Boundary</li> <li>District Boundary</li> <li>Sub-County Boundary</li> <li>Parish Boundary</li> <li>Landuse Type                     <ul style="list-style-type: none"> <li>Forest Reserve</li> <li>Game Reserve</li> <li>National Park</li> <li>Rangeland</li> <li>Water Body/Lakes</li> </ul> </li> </ul>	<p><b>Health Centres by Type</b></p> <ul style="list-style-type: none"> <li>HC II</li> <li>HC III</li> <li>HC IV</li> </ul> <p><b>Schools by Type</b></p> <ul style="list-style-type: none"> <li>Primary</li> <li>Secondary</li> </ul>	<p><b>Water Sources</b></p> <ul style="list-style-type: none"> <li>Communal tank</li> <li>Deep borehole</li> <li>Gfs/Tap</li> <li>Protected spring</li> <li>Shallow well</li> <li>Unknown</li> <li>5km Health access buffer (~ 1-1.5 hrs walk to any HC)</li> </ul>	<p><b>Water Source Status</b></p> <ul style="list-style-type: none"> <li>Operational</li> <li>Temporarily down</li> <li>Abandoned</li> <li>Unknown</li> <li>2.5km School access buffer (~ 1 hrs walk to any School)</li> <li>999 Projected Population 2009 (by Parish)</li> </ul>
--	--	---	---

Data Sources:  
 Admin Boundaries - UBOS 2006  
 Admin Centres - UBOS 2002/2006  
 Landuse - UBOS 2006  
 Road Network - FAO  
 Towns - Humanitarian Agencies in the field  
 Major Centres - Humanitarian Agencies in the field  
 IDP/Returnee site - Humanitarian Agencies/KDC/02  
 Basic Services - Schools, DEO, Apr 2009  
 Health, DHO, Apr 2009  
 Water, DWO, Sep 2008  
 (with supported by UNOCHA)

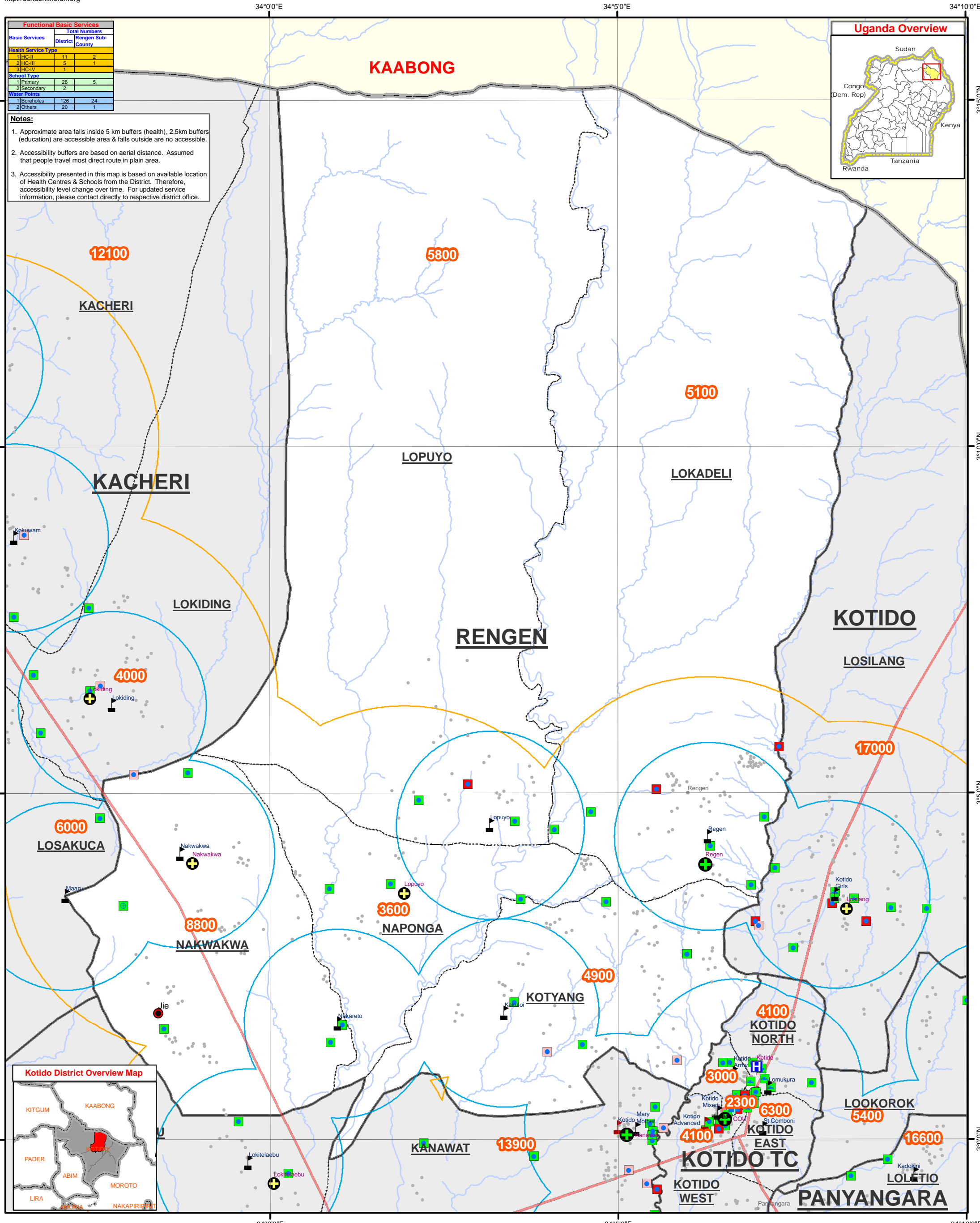
This map is a work in progress. Please contact the IMU/OCHA as soon as possible with any corrections.

**Draft**

Map Disclaimer:  
 The boundaries and names shown and the designations used on this map do not imply official endorsement or acceptance by the United Nations.

Map Prepare Date: 13 Aug 2009 (IMU/UNOCHA, Kampala)  
 File: UG-Atlas-13\_A3\_13Aug09\_Kotido District - Kotido Town Council Basic Services

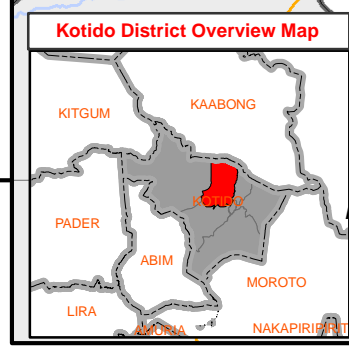
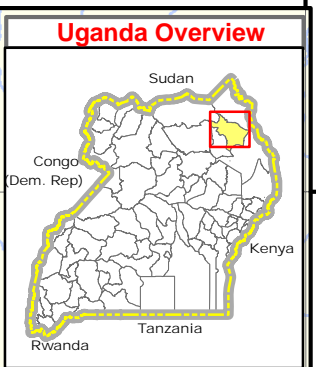




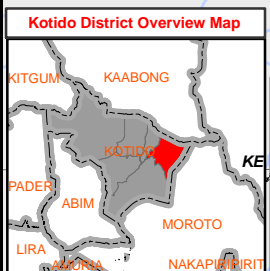
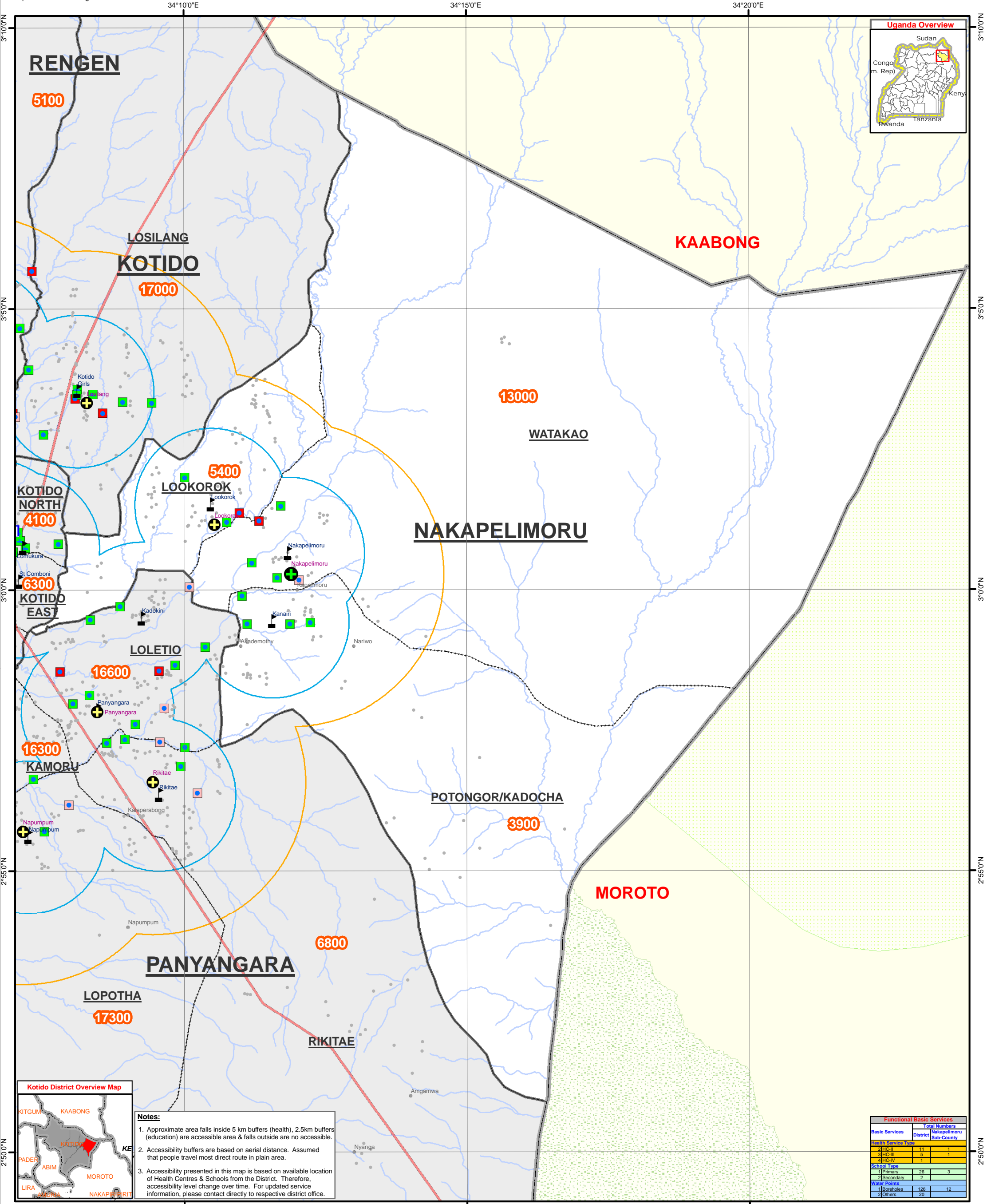
Functional Basic Services		
Basic Services	District	Rengen Sub-County
<b>Health Service Type</b>		
1 HC-I	11	2
2 HC-III	5	1
3 HC-IV	1	1
<b>School Type</b>		
1 Primary	26	5
2 Secondary	2	0
<b>Water Points</b>		
1 Boreholes	126	24
2 Others	20	1

**Notes:**

1. Approximate area falls inside 5 km buffers (health), 2.5km buffers (education) are accessible area & falls outside are no accessible.
2. Accessibility buffers are based on aerial distance. Assumed that people travel most direct route in plain area.
3. Accessibility presented in this map is based on available location of Health Centres & Schools from the District. Therefore, accessibility level change over time. For updated service information, please contact directly to respective district office.



<p><b>Legend</b></p> <ul style="list-style-type: none"> <li>District Admin Centres</li> <li>County Admin Centres</li> <li>Towns</li> <li>IDP Camp</li> <li>IDP Returnee Site</li> <li>Settlements</li> <li>Motorable Road</li> <li>Drainage</li> <li>National Boundary</li> <li>District Boundary</li> <li>Sub-County Boundary</li> <li>Parish Boundary</li> </ul>	<p><b>Landuse Type</b></p> <ul style="list-style-type: none"> <li>Forest Reserve</li> <li>Game Reserve</li> <li>National Park</li> <li>Rangeland</li> <li>Water Body/Lakes</li> </ul>	<p><b>Health Centres by Type</b></p> <ul style="list-style-type: none"> <li>HC II</li> <li>HC III</li> <li>HC IV</li> </ul> <p><b>Schools by Type</b></p> <ul style="list-style-type: none"> <li>Primary</li> <li>Secondary</li> </ul>	<p><b>Water Sources</b></p> <ul style="list-style-type: none"> <li>Communal tank</li> <li>Deep borehole</li> <li>Gfs/Tap</li> <li>Protected spring</li> <li>Shallow well</li> <li>Unknown</li> <li>5km Health access buffer (~ 1-1.5 hrs walk to any HC)</li> </ul>	<p><b>Water Source Status</b></p> <ul style="list-style-type: none"> <li>Operational</li> <li>Temporarily down</li> <li>Abandoned</li> <li>Unknown</li> <li>2.5km School access buffer (~ 1 hrs walk to any School)</li> <li>999 Projected Population 2009 (by Parish)</li> </ul>	<p>Data Sources:</p> <ul style="list-style-type: none"> <li>Admin Boundaries - UBOS 2006</li> <li>Admin Centres - UBOS 2002/2006</li> <li>Landuse - UBOS 2006</li> <li>Road Network - FAO</li> <li>Towns - Humanitarian Agencies in the field</li> <li>IDP/Returnee site- Humanitarian Agencies in the field</li> <li>Settlements/Drainage - Humanitarian Agencies/KDC'02</li> <li>Basic Services - Schools, DEO, Apr 2009</li> <li>Health, DHO, Apr 2009</li> <li>Water, DWO, Sep 2008 (with supported by UNOCHA)</li> </ul> <p>This map is a work in progress. Please contact the IMU/Ocha as soon as possible with any corrections.</p> <p><b>Draft</b></p> <p>Map Disclaimer:              The boundaries and names shown on this map do not imply official endorsement or acceptance by the United Nations.</p> <p>Map Prepare Date: 13 Aug 2009 (IMU/UNOCHA, Kampala)</p> <p>File: UG-Atlas-12_A3_13Aug09_Kotido District - Rengen Sub-County Basic Services</p>
--	---	--	---	---	--



**Notes:**

1. Approximate area falls inside 5 km buffers (health), 2.5km buffers (education) are accessible area & falls outside are no accessible.
2. Accessibility buffers are based on aerial distance. Assumed that people travel most direct route in plain area.
3. Accessibility presented in this map is based on available location of Health Centres & Schools from the District. Therefore, accessibility level change over time. For updated service information, please contact directly to respective district office.

Functional Basic Services		
Basic Services	District	Total Numbers
Health Service Type		
2 HC-II	11	1
3 HC-III	5	1
4 HC-IV	1	
School Type		
1 Primary	26	3
2 Secondary	2	
Water Points		
1 Boreholes	126	12
2 Others	20	

**Legend**

- District Admin Centres
- County Admin Centres
- Towns
- ▲ IDP Camp
- IDP Returnee Site
- Settlements
- Motorable Road
- Drainage
- National Boundary
- District Boundary
- Sub-County Boundary
- Parish Boundary
- Forest Reserve
- Game Reserve
- National Park
- Rangeland
- Water Body/Lakes

**Health Centres by Type**

- + HC II
- + HC III
- + HC IV

**Schools by Type**

- ▲ Primary
- ▲ Secondary

**Water Sources**

- Communal tank
- Deep borehole
- + Gfs/Tap
- ⊕ Protected spring
- Shallow well
- ▲ Unknown
- 5km Health access buffer (~ 1-1.5 hrs walk to any HC)

**Water Source Status**

- Operational
- Temporarily down
- Abandoned
- Unknown
- 2.5km School access buffer (~ 1 hrs walk to any School)
- 999 Projected Population 2009 (by Parish)

Data Sources:

- Admin Boundaries - UBOS 2006
- Admin Centres - UBOS 2002/2006
- Landuse - UBOS 2006
- Road Network - FAO
- Towns - Humanitarian Agencies in the field
- Major Centres - Humanitarian Agencies in the field
- IDP/Returnee site - Humanitarian Agencies/KDC'02
- Settlements/Drainage - Humanitarian Agencies/KDC'02
- Basic Services - Schools, DEO, Apr 2009
- Health, DHO, Apr 2009
- Water, DWO, Sep 2008 (with supported by UNOCHA)

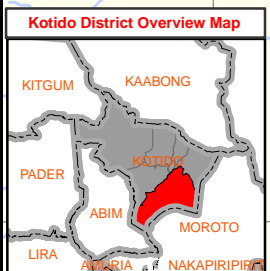
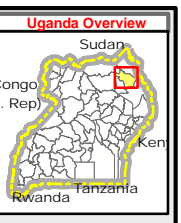
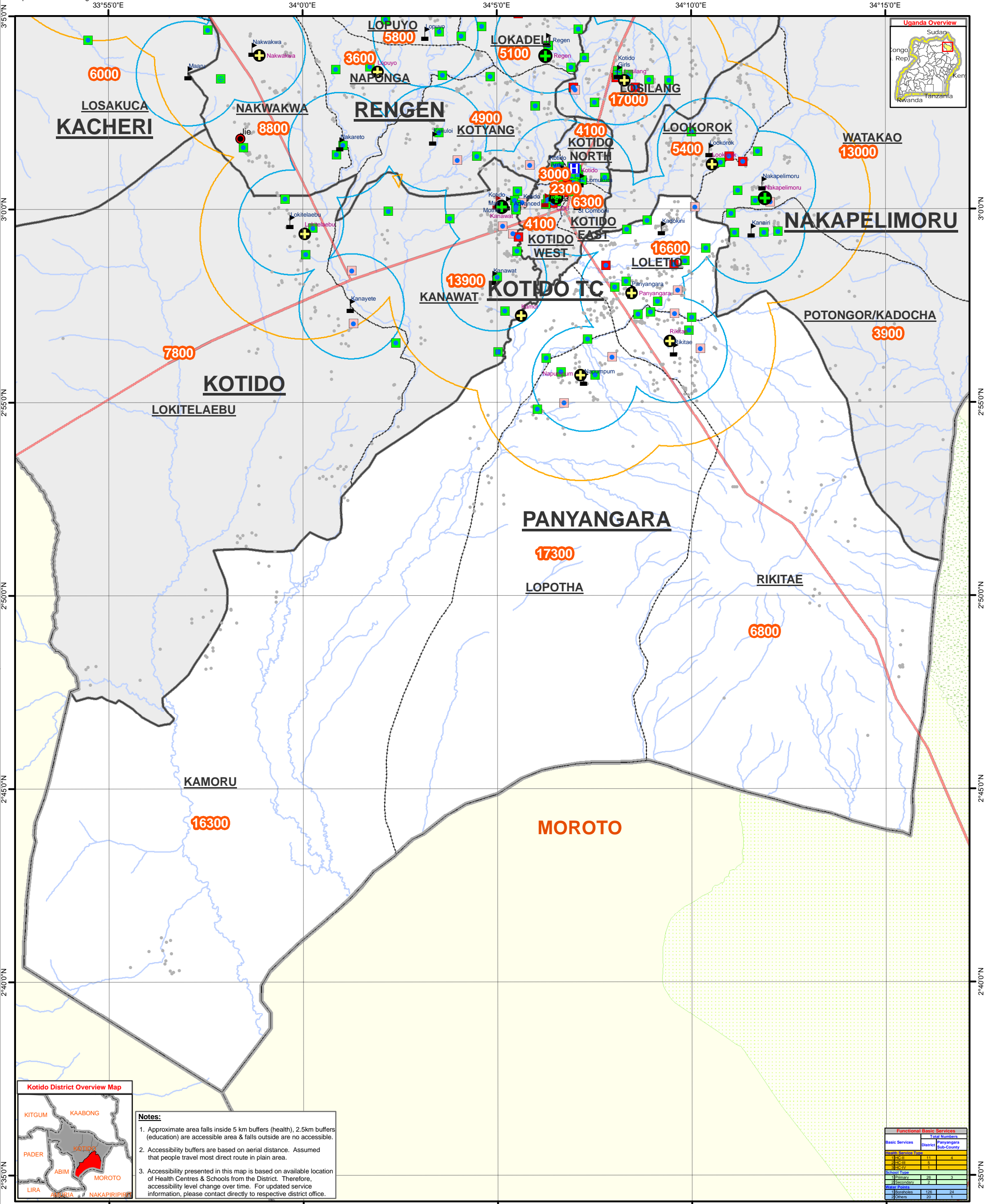
Draft

This map is a work in progress. Please contact the IMU/OCHA as soon as possible with any corrections.

Map Disclaimer: The boundaries and names shown on this map do not imply official endorsement or acceptance by the United Nations.

0 1 2 4 Kilometers

Map Prepare Date: 13 Aug 2009 (IMU/UNOCHA, Kampala)  
 File: UG-Atlas-14\_A3\_13Aug09\_Kotido District - Nakapelimoru Sub County Basic Services



**Notes:**

1. Approximate area falls inside 5 km buffers (health), 2.5km buffers (education) are accessible area & falls outside are no accessible.
2. Accessibility buffers are based on aerial distance. Assumed that people travel most direct route in plain area.
3. Accessibility presented in this map is based on available location of Health Centres & Schools from the District. Therefore, accessibility level change over time. For updated service information, please contact directly to respective district office.

Functional Basic Services		
Basic Services	District	Panyangara Sub-County
<b>Health Services Type</b>		
HC-II	11	4
HC-III	5	1
HC-IV	2	0
<b>Schools Type</b>		
Primary	26	3
Secondary	2	0
<b>Water Points</b>		
Communal	128	21
Deep	20	1
Other	20	1

**Legend**

- District Admin Centres (Red circle with black dot)
- County Admin Centres (Orange circle)
- Towns (Red dot)
- IDP Camp (Blue triangle)
- IDP Returnee Site (Black dot)
- Settlements (Grey dot)
- Motorable Road (Red line)
- Drainage (Blue line)
- National Boundary (Yellow dashed line)
- District Boundary (Black dashed line)
- Sub-County Boundary (Grey dashed line)
- Parish Boundary (Black dotted line)
- Landuse Type:
  - Forest Reserve (Green hatched)
  - Game Reserve (Green dotted)
  - National Park (Green solid)
  - Rangeland (Green dashed)
  - Water Body/Lakes (Blue solid)
- Health Centres by Type:
  - HC II (Green cross)
  - HC III (Green circle with cross)
  - HC IV (Blue square with cross)
  - Schools by Type:
    - Primary (Black triangle)
    - Secondary (Red triangle)
- Water Sources:
  - Communal tank (Blue square)
  - Deep borehole (Blue circle)
  - Gfs/Tap (Blue plus)
  - Protected spring (Blue circle with plus)
  - Shallow well (Blue circle with dot)
  - Unknown (Blue triangle)
  - 5km Health access buffer (~ 1-1.5 hrs walk to any HC) (Orange circle)
- Water Source Status:
  - Operational (Green square)
  - Temporarily down (Pink square)
  - Abandoned (Red square)
  - Unknown (Light blue square)
  - 2.5km School access buffer (~ 1 hrs walk to any School) (Blue circle)
  - 999 Projected Population 2009 (by Parish) (Orange circle)

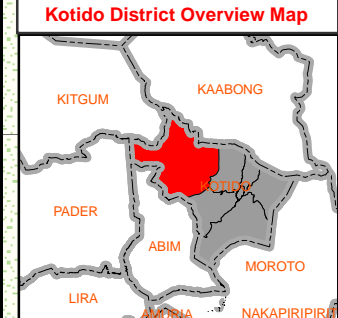
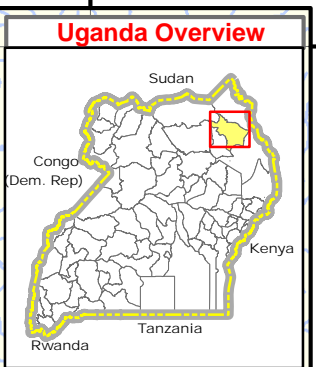
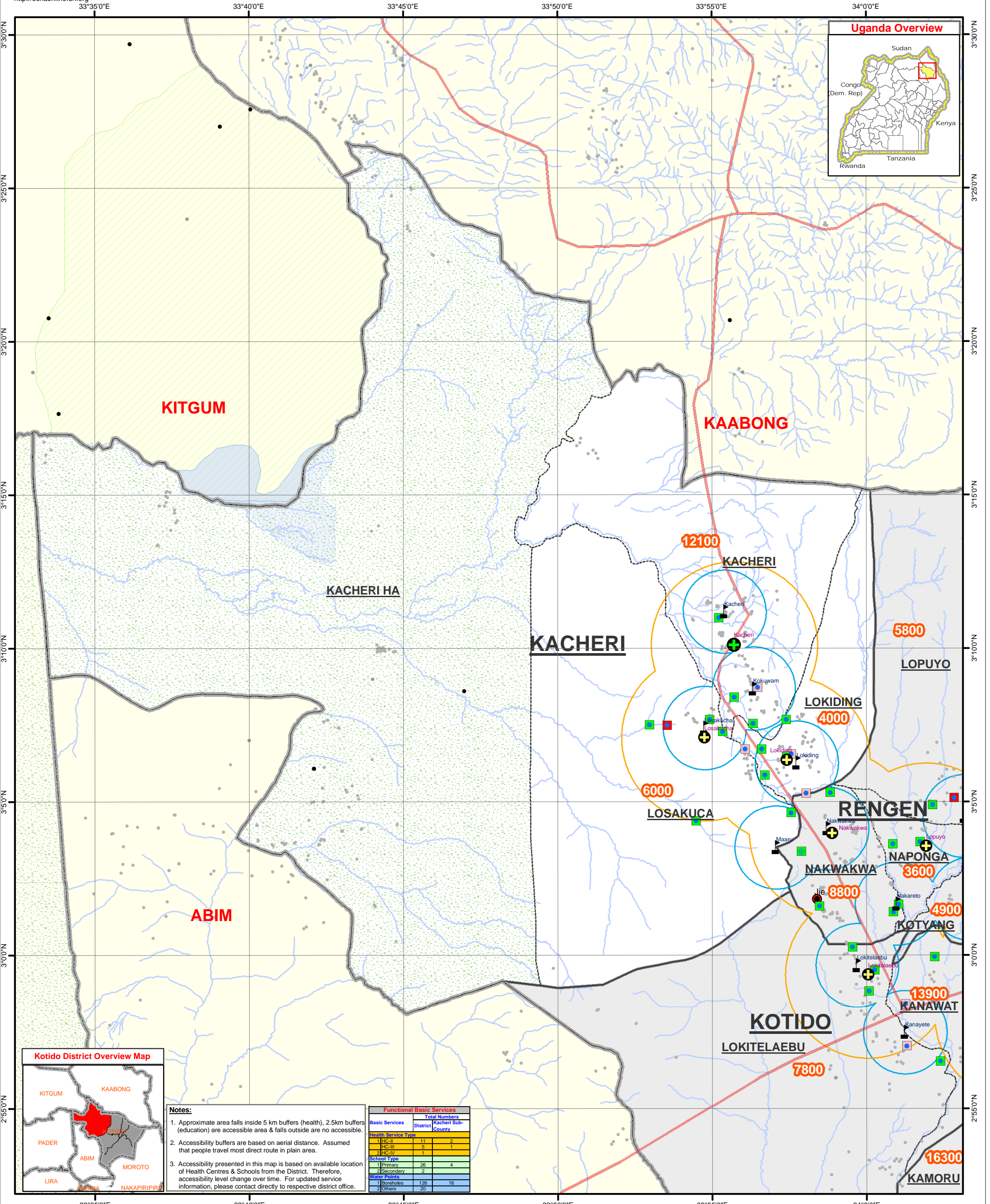
Data Sources:  
 Admin Boundaries - UBOS 2006  
 Admin Centres - UBOS 2002/2006  
 Landuse - UBOS 2006  
 Road Network - FAO  
 Towns - Humanitarian Agencies in the field  
 Major Centres - Humanitarian Agencies in the field  
 IDP/Returnee site - Humanitarian Agencies in the field  
 Settlements/Drainage - Humanitarian Agencies/KDC'02  
 Basic Services - Schools, DEO, Apr 2009  
 Health, DHO, Apr 2009  
 Water, DWO, Sep 2008  
 (with supported by UNOCHA)

This map is a work in progress. Please contact the IMU/OCHA as soon as possible with any corrections.

**Draft**

Map Disclaimer:  
 The boundaries and names shown on this map do not imply official endorsement or acceptance by the United Nations.

Map Prepare Date: 14 Aug 2009 (IMU/UNOCHA, Kampala)  
 File: UG-Atlas-16\_A3\_14Aug09\_Kotido District - Panyangara Sub County Basic Services



**Notes:**

1. Approximate area falls inside 5 km buffers (health), 2.5km buffers (education) are accessible area & falls outside are no accessible.
2. Accessibility buffers are based on aerial distance. Assumed that people travel most direct route in plain area.
3. Accessibility presented in this map is based on available location of Health Centres & Schools from the District. Therefore, accessibility level change over time. For updated service information, please contact directly to respective district office.

Functional Basic Services		
Basic Services	Total Numbers	Kacheri Sub-County
<b>Health Service Type</b>		
1 HC-II	11	2
1 HC-III	5	1
2 HC-IV	1	
<b>School Type</b>		
1 Primary	26	4
2 Secondary	2	
<b>Water Points</b>		
1 Boreholes	126	16
2 Others	20	

**Legend**

- District Admin Centres
- County Admin Centres
- Towns
- IDP Camp
- IDP Returnee Site
- Settlements
- Motorable Road
- Drainage
- National Boundary
- District Boundary
- Sub-County Boundary
- Parish Boundary
- Landuse Type
  - Forest Reserve
  - Game Reserve
  - National Park
  - Rangeland
  - Water Body/Lakes
- Health Centres by Type
  - HC II
  - HC III
  - HC IV
  - Schools by Type
    - Primary
    - Secondary
- Water Sources
  - Communal tank
  - Deep borehole
  - Gfs/Tap
  - Protected spring
  - Shallow well
  - Unknown
  - 5km Health access buffer (~ 1-1.5 hrs walk to any HC)
- Water Source Status
  - Operational
  - Temporarily down
  - Abandoned
  - Unknown
  - 2.5km School access buffer (~ 1 hrs walk to any School)
  - 999 Projected Population 2009 (by Parish)

Data Sources:  
 Admin Boundaries - UBOS 2006  
 Admin Centres - UBOS 2002/2006  
 Landuse - UBOS 2006  
 Road Network - FAO  
 Towns - Humanitarian Agencies in the field  
 IDP/Returnee site- Humanitarian Agencies in the field  
 Settlements/Drainage - Humanitarian Agencies/KDC'02  
 Basic Services - Schools, DEO, Apr 2009  
 Water, DWO, Sep 2008  
 (with supported by UNOCHA)

This map is a work in progress. Please contact the IMU/Ocha as soon as possible with any corrections.

**Draft**

Map Disclaimer:  
 The boundaries and names shown on this map do not imply official endorsement or acceptance by the United Nations.

Map Prepare Date: 12 Aug 2009 (IMU/UNOCHA, Kampala)  
 File: UG-Atlas-11\_A3\_12Aug09\_Kotido District - Kacheri Sub-County Basic Services